

TCP11L2 Recombinant antibody, PBS Only (Capture)

Catalog Number: 83227-1-PBS

Basic Information

Catalog Number: 83227-1-PBS	GenBank Accession Number: BC033617	Purification Method: Protein A purification
Size: 100ug , Concentration: 1 mg/ml by Nanodrop;	GeneID (NCBI): 255394	CloneNo.: 240096F6
Source: Rabbit	UNIPROT ID: Q8N4U5	
Isotype: IgG	Full Name: t-complex 11 (mouse)-like 2	
Immunogen Catalog Number: AG11185	Calculated MW: 519 aa, 58 kDa	

Applications

Tested Applications:
Cytometric bead array, Indirect ELISA, WB

Species Specificity:
canine, human

Product Information

83227-1-PBS targets TCP11L2 as part of a matched antibody pair:

MP00177-1: 83227-1-PBS capture and 83227-2-PBS detection (validated in Cytometric bead array)

Unconjugated rabbit recombinant monoclonal antibody in PBS only (BSA and azide free) storage buffer at a concentration of 1 mg/mL, ready for conjugation. Created using Proteintech's proprietary in-house recombinant technology. Recombinant production enables unrivalled batch-to-batch consistency, easy scale-up, and future security of supply.

This conjugation ready format makes antibodies ideal for use in many applications including: ELISAs, multiplex assays requiring matched pairs, mass cytometry, and multiplex imaging applications. Antibody use should be optimized by the end user for each application and assay.

Background Information

TCP11L2 is a protein containing a serine-rich region in its N-terminal region. It is a member of the TCP11 family, which includes SOK1, TCP11L1, and TCP11L2. TCP11L2 has a role in the migration and differentiation of skeletal muscle-derived satellite cells. It has been shown that Tcp11l2 expression gradually increased during the differentiation of bovine muscle-derived satellite cells. (PMID: 32017087)

Storage

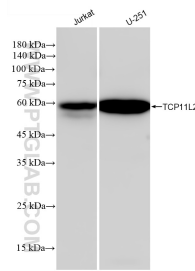
Storage:
Store at -80°C.

Storage Buffer:
PBS Only

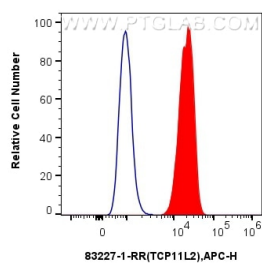
For technical support and original validation data for this product please contact:
T: 1 (888) 4PTGLAB (1-888-478-4522) (toll free in USA), or 1(312) 455-8498 (outside USA)
E: proteintech@ptglab.com
W: ptglab.com

This product is exclusively available under Proteintech Group brand and is not available to purchase from any other manufacturer.

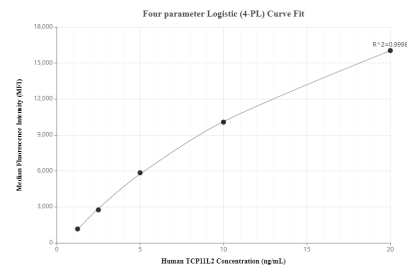
Selected Validation Data



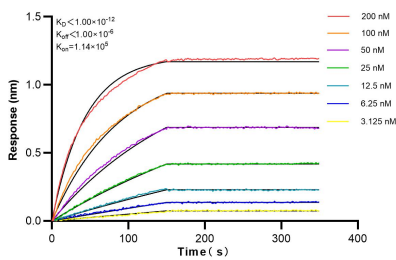
Various lysates were subjected to SDS PAGE followed by western blot with 83227-1-RR (TCP11L2 antibody) at dilution of 1:5000 incubated at room temperature for 1.5 hours. This data was developed using the same antibody clone with 83227-1-PBS in a different storage buffer formulation.



1x10⁶ A431 cells were intracellularly stained with 0.25 ug TCP11L2 Recombinant antibody (83227-1-RR, Clone:240096F6) and APC-Conjugated AffiniPure Goat Anti-Rabbit IgG(H+L) (red), or 0.25 ug Isotype Control (blue). Cells were fixed and permeabilized with Transcription Factor Staining Buffer Kit (PF00011). This data was developed using the same antibody clone with 83227-1-PBS in a different storage buffer formulation.



Cytometric bead array standard curve of MP00177-1, TCP11L2 Recombinant Matched Antibody Pair, PBS Only. Capture antibody: 83227-1-PBS. Detection antibody: 83227-2-PBS. Standard: Ag11185. Range: 1.25-20 ng/mL.



Biolayer interferometry (BLI) kinetic assays of 83227-1-RR against Human TCP11L2 were performed. The affinity constant is below 1 pM.