

For Research Use Only

CPD Recombinant antibody, PBS Only (Capture/Detector)

Catalog Number: 83229-3-PBS



Basic Information

Catalog Number: 83229-3-PBS	GenBank Accession Number: NM_001304	Purification Method: Protein A purification
Size: 100ug , Concentration: 1mg/ml by Nanodrop;	GeneID (NCBI): 1362	CloneNo.: 240196G11
Source: Rabbit	UNIPROT ID: O75976	
Isotype: IgG	Full Name: carboxypeptidase D	
Immunogen Catalog Number: AG34646	Calculated MW: 153 kDa	

Applications

Tested Applications:
Cytometric bead array, Sandwich ELISA, Indirect ELISA, Sample test

Species Specificity:
human

Product Information

83229-3-PBS targets CPD as part of a matched antibody pair:

MP00185-1: 83229-3-PBS capture and 83229-1-PBS detection (validated in Cytometric bead array, Sandwich ELISA)

MP00185-2: 83229-2-PBS capture and 83229-3-PBS detection (validated in Cytometric bead array)

Unconjugated rabbit recombinant monoclonal antibody in PBS only (BSA and azide free) storage buffer at a concentration of 1 mg/mL, ready for conjugation. Created using Proteintech's proprietary in-house recombinant technology. Recombinant production enables unrivalled batch-to-batch consistency, easy scale-up, and future security of supply.

This conjugation ready format makes antibodies ideal for use in many applications including: ELISAs, multiplex assays requiring matched pairs, mass cytometry, and multiplex imaging applications. Antibody use should be optimized by the end user for each application and assay.

Storage

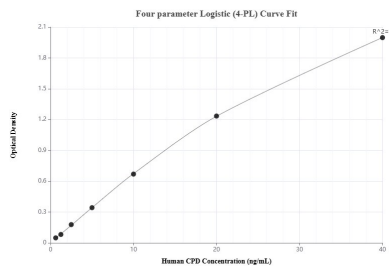
Storage:
Store at -80°C.

Storage Buffer:
PBS Only

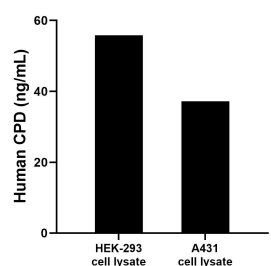
For technical support and original validation data for this product please contact:
T: 1 (888) 4PTGLAB (1-888-478-4522) (toll free in USA), or 1(312) 455-8498 (outside USA)
E: proteintech@ptglab.com
W: ptglab.com

This product is exclusively available under Proteintech Group brand and is not available to purchase from any other manufacturer.

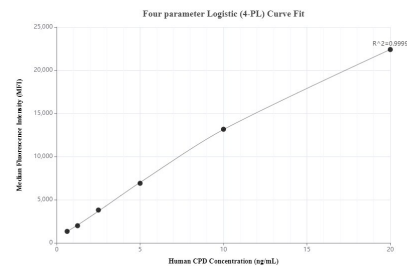
Selected Validation Data



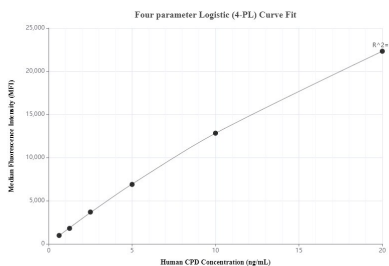
Sandwich ELISA standard curve of MP00185-1, Human CPD Recombinant Matched Antibody Pair - PBS only. 83229-3-PBS was coated to a plate as the capture antibody and incubated with serial dilutions of standard Ag34646. 83229-1-PBS was HRP conjugated as the detection antibody. Range: 0.625-40 ng/mL



HEK-293 and A431 cell lysate were measured. The human CPD concentration of detected samples was determined to be 55.8 ng/mL (based on a 1.2 mg/mL extract load) in HEK-293 cell lysate and 37.2 ng/mL (based on a 1.5 mg/mL extract load) in A431 cell lysate.



Cytometric bead array standard curve of MP00185-1, CPD Recombinant Matched Antibody Pair, PBS Only. Capture antibody: 83229-3-PBS. Detection antibody: 83229-1-PBS. Standard: Ag34646. Range: 0.625-20 ng/mL



Cytometric bead array standard curve of MP00185-2, CPD Recombinant Matched Antibody Pair, PBS Only. Capture antibody: 83229-2-PBS. Detection antibody: 83229-3-PBS. Standard: Ag34646. Range: 0.625-20 ng/mL