

For Research Use Only

Carboxypeptidase D/CPD Recombinant monoclonal antibody, PBS Only

Catalog Number:83229-5-PBS



Basic Information

Catalog Number: 83229-5-PBS	GenBank Accession Number: NM_001304.4	Purification Method: Protein A purification
Size: 100ug , Concentration: 1 mg/ml by Nanodrop;	GeneID (NCBI): 1362	CloneNo.: 260182E1
Source: Rabbit	UNIPROT ID: O75976-1	
Isotype: IgG	Full Name: carboxypeptidase D	
Immunogen Catalog Number: EG5677	Calculated MW: 153 kDa	
	Observed MW: 180-200 kDa	

Applications

Tested Applications:
WB, Indirect ELISA

Species Specificity:
human

Background Information

Carboxypeptidase D (CPD) is a membrane-bound metalloprotein that processes proteins and peptides during the secretory pathway, particularly by removing C-terminal arginine or lysine residues. Encoded by the CPD gene, it plays a regulatory role in peptide hormone processing and is also known to be a receptor for hepatitis B virus. Functioning as a regulatory type B carboxypeptidase, it typically acts on substrates within the trans-Golgi network and is recycled to the plasma membrane. With a predicted molecular weight of 152 kDa, CPD, as a membrane-bound glycoprotein, undergoes significant glycosylation modifications. The actual observed molecular weight is usually higher than the theoretical value; 180-200 kDa represents the typical apparent molecular weight range. This difference is primarily due to N-linked and O-linked glycosylations.

Storage

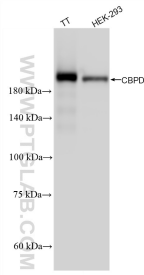
Storage:
Store at -80°C.

Storage Buffer:
PBS only, pH7.3

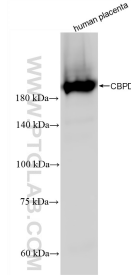
For technical support and original validation data for this product please contact:
T: 1 (888) 4PTGLAB (1-888-478-4522) (toll free in USA), or 1(312) 455-8498 (outside USA) E: proteintech@ptglab.com W: ptglab.com

This product is exclusively available under Proteintech Group brand and is not available to purchase from any other manufacturer.

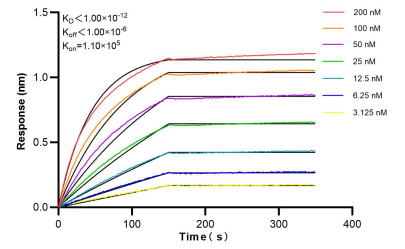
Selected Validation Data



Various lysates were subjected to SDS PAGE followed by western blot with 83229-5-RR (CBPD antibody) at dilution of 1:10000 incubated at room temperature for 1.5 hours. This data was developed using the same antibody clone with 83229-5-PBS in a different storage buffer formulation.



Various lysates were subjected to SDS PAGE followed by western blot with 83229-5-RR (CBPD antibody) at dilution of 1:10000 incubated at room temperature for 1.5 hours. This data was developed using the same antibody clone with 83229-5-PBS in a different storage buffer formulation.



Biolayer interferometry (BLI) kinetic assays of 83229-5-RR against Human Carboxypeptidase D/CPD were performed. The affinity constant is below 1 pM.