

For Research Use Only

Carboxypeptidase D/CPD Recombinant monoclonal antibody

Catalog Number:83229-5-RR



Basic Information

Catalog Number: 83229-5-RR	GenBank Accession Number: NM_001304.4	Purification Method: Protein A purification
Size: 100ul , Concentration: 1000 µg/ml by Nanodrop;	GeneID (NCBI): 1362	CloneNo.: 260182E1
Source: Rabbit	UNIPROT ID: O75976-1	Recommended Dilutions: WB: 1:5000-1:50000
Isotype: IgG	Full Name: carboxypeptidase D	
Immunogen Catalog Number: EG5677	Calculated MW: 153 kDa	
	Observed MW: 180-200 kDa	

Applications

Tested Applications: WB, ELISA	Positive Controls: WB : TT cells, HEK-293 cells, human placenta tissue
Species Specificity: human	

Background Information

Carboxypeptidase D (CPD) is a membrane-bound metallo-carboxypeptidase that processes proteins and peptides during the secretory pathway, particularly by removing C-terminal arginine or lysine residues. Encoded by the CPD gene, it plays a regulatory role in peptide hormone processing and is also known to be a receptor for hepatitis B virus. Functioning as a regulatory type B carboxypeptidase, it typically acts on substrates within the trans-Golgi network and is recycled to the plasma membrane. With a predicted molecular weight of 152 kDa, CPD, as a membrane-bound glycoprotein, undergoes significant glycosylation modifications. The actual observed molecular weight is usually higher than the theoretical value; 180-200 kDa represents the typical apparent molecular weight range. This difference is primarily due to N-linked and O-linked glycosylations.

Storage

Storage:
Store at -20°C. Stable for one year after shipment.
Storage Buffer:
PBS with 0.02% sodium azide and 50% glycerol, pH7.3
Aliquoting is unnecessary for -20°C storage

*** 20ul sizes contain 0.1% BSA

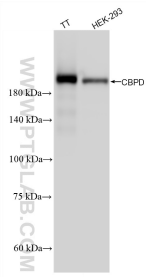
For technical support and original validation data for this product please contact:

T: 1 (888) 4PTGLAB (1-888-478-4522) (toll free in USA), or 1(312) 455-8498 (outside USA)

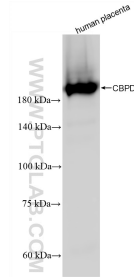
E: proteintech@ptglab.com
W: ptglab.com

This product is exclusively available under Proteintech Group brand and is not available to purchase from any other manufacturer.

Selected Validation Data



Various lysates were subjected to SDS PAGE followed by western blot with 83229-5-RR (CBPD antibody) at dilution of 1:10000 incubated at room temperature for 1.5 hours.



Various lysates were subjected to SDS PAGE followed by western blot with 83229-5-RR (CBPD antibody) at dilution of 1:10000 incubated at room temperature for 1.5 hours.