

For Research Use Only

MTNR1A Recombinant antibody, PBS Only (Capture/Detector)

Catalog Number: 83234-2-PBS



Basic Information

Catalog Number: 83234-2-PBS	GenBank Accession Number: BC074947	Purification Method: Protein A purification
Size: 100ug , Concentration: 1mg/ml by Nanodrop;	GeneID (NCBI): 4543	CloneNo.: 240005C3
Source: Rabbit	UNIPROT ID: P48039	
Isotype: IgG	Full Name: melatonin receptor 1A	
Immunogen Catalog Number: AG24198	Calculated MW: 350 aa, 39 kDa	

Applications

Tested Applications:
Cytometric bead array, Sandwich ELISA, Indirect ELISA, Sample test

Species Specificity:
human

Product Information

83234-2-PBS targets MTNR1A as part of a matched antibody pair:

MP00214-1: 83234-1-PBS capture and 83234-2-PBS detection (validated in Cytometric bead array)

MP00214-2: 83234-2-PBS capture and 83234-3-PBS detection (validated in Cytometric bead array)

MP00214-3: 83234-2-PBS capture and 83234-5-PBS detection (validated in Sandwich ELISA)

Unconjugated rabbit recombinant monoclonal antibody in PBS only (BSA and azide free) storage buffer at a concentration of 1 mg/mL, ready for conjugation. Created using Proteintech's proprietary in-house recombinant technology. Recombinant production enables unrivalled batch-to-batch consistency, easy scale-up, and future security of supply.

This conjugation ready format makes antibodies ideal for use in many applications including: ELISAs, multiplex assays requiring matched pairs, mass cytometry, and multiplex imaging applications. Antibody use should be optimized by the end user for each application and assay.

Storage

Storage:
Store at -80°C.

Storage Buffer:
PBS Only

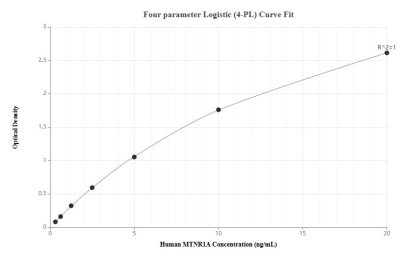
For technical support and original validation data for this product please contact:

T: 1 (888) 4PTGLAB (1-888-478-4522) (toll free in USA), or 1(312) 455-8498 (outside USA)

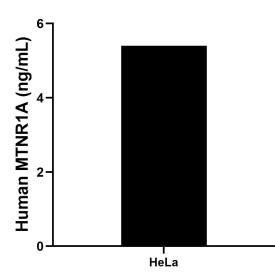
E: proteintech@ptglab.com
W: ptglab.com

This product is exclusively available under Proteintech Group brand and is not available to purchase from any other manufacturer.

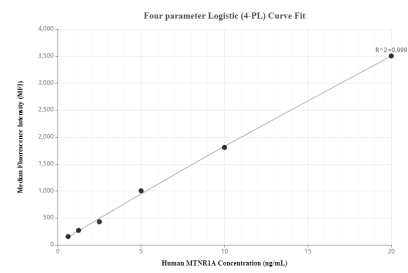
Selected Validation Data



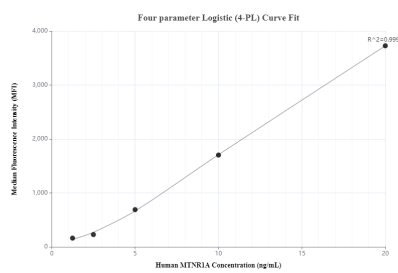
Sandwich ELISA standard curve of MP00214-3, Human MTNR1A Recombinant Matched Antibody Pair - PBS only. 83234-2-PBS was coated to a plate as the capture antibody and incubated with serial dilutions of standard Ag24198. 83234-5-PBS was HRP conjugated as the detection antibody. Range: 0.313-20 ng/mL



The mean MTNR1A concentration was determined to be 5.40 ng/mL in HeLa cell extract based on a 1.0 mg/mL extract load.



Cytometric bead array standard curve of MP00214-1, MTNR1A Recombinant Matched Antibody Pair, PBS Only. Capture antibody: 83234-1-PBS. Detection antibody: 83234-2-PBS. Standard: Ag24198. Range: 0.625-20 ng/mL



Cytometric bead array standard curve of MP00214-2, MTNR1A Recombinant Matched Antibody Pair, PBS Only. Capture antibody: 83234-2-PBS. Detection antibody: 83234-3-PBS. Standard: Ag24198. Range: 1.25-20 ng/mL