

For Research Use Only

MKNK2 Recombinant antibody, PBS Only (Capture/Detector)

Catalog Number: 83235-4-PBS



Basic Information

Catalog Number: 83235-4-PBS	GenBank Accession Number: BC018345	Purification Method: Protein A purification
Size: 100ug, Concentration: 1mg/ml by Nanodrop;	GeneID (NCBI): 2872	CloneNo.: 240045D11
Source: Rabbit	UNIPROT ID: Q9HBH9	
Isotype: IgG	Full Name: MAP kinase interacting serine/threonine kinase 2	
Immunogen Catalog Number: AG10546	Calculated MW: 465 aa, 52 kDa	

Applications

Tested Applications:
Cytometric bead array, Sandwich ELISA, Indirect ELISA, Sample test

Species Specificity:
human

Product Information

83235-4-PBS targets MKNK2 as part of a matched antibody pair:

MP00216-1: 83235-4-PBS capture and 83235-3-PBS detection (validated in Cytometric bead array)

MP00216-2: 83235-4-PBS capture and 83235-1-PBS detection (validated in Cytometric bead array)

MP00216-4: 83235-5-PBS capture and 83235-4-PBS detection (validated in Sandwich ELISA)

Unconjugated rabbit recombinant monoclonal antibody in PBS only (BSA and azide free) storage buffer at a concentration of 1 mg/mL, ready for conjugation. Created using Proteintech's proprietary in-house recombinant technology. Recombinant production enables unrivalled batch-to-batch consistency, easy scale-up, and future security of supply.

This conjugation ready format makes antibodies ideal for use in many applications including: ELISAs, multiplex assays requiring matched pairs, mass cytometry, and multiplex imaging applications. Antibody use should be optimized by the end user for each application and assay.

Storage

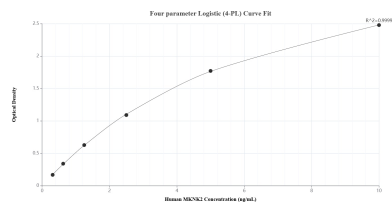
Storage:
Store at -80°C.

Storage Buffer:
PBS only, pH7.3

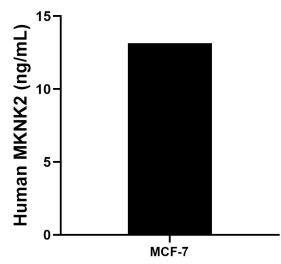
For technical support and original validation data for this product please contact:
T: 1 (888) 4PTGLAB (1-888-478-4522) (toll free in USA), or 1(312) 455-8498 (outside USA)
E: proteintech@ptglab.com
W: ptglab.com

This product is exclusively available under Proteintech Group brand and is not available to purchase from any other manufacturer.

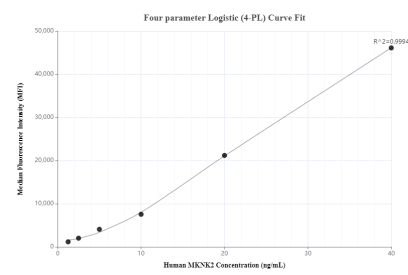
Selected Validation Data



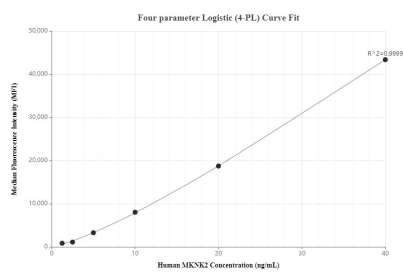
Sandwich ELISA standard curve of MP00216-4, Human MKNK2 Recombinant Matched Antibody Pair - PBS only. 83235-5-PBS was coated to a plate as the capture antibody and incubated with serial dilutions of standard Ag10546. 83235-4-PBS was HRP conjugated as the detection antibody. Range: 0.313-10 ng/mL



The mean MKNK2 concentration was determined to be 13.14 ng/mL in MCF-7 cell extract based on a 1.20 mg/mL extract load.



Cytometric bead array standard curve of MP00216-1, MKNK2 Recombinant Matched Antibody Pair, PBS Only. Capture antibody: 83235-4-PBS. Detection antibody: 83235-3-PBS. Standard: Ag10546. Range: 1.25-40 ng/mL



Cytometric bead array standard curve of MP00216-2, MKNK2 Recombinant Matched Antibody Pair, PBS Only. Capture antibody: 83235-4-PBS. Detection antibody: 83235-1-PBS. Standard: Ag10546. Range: 1.25-40 ng/mL