

For Research Use Only

SLC16A11 Recombinant antibody, PBS Only (Detector)



Catalog Number: 83239-2-PBS

Basic Information

Catalog Number: 83239-2-PBS	GenBank Accession Number: BC093860	Purification Method: Protein A purification
Size: 100ug , Concentration: 1mg/ml by Nanodrop;	GeneID (NCBI): 162515	CloneNo.: 240081G10
Source: Rabbit	UNIPROT ID: Q8NCK7	
Isotype: IgG	Full Name: solute carrier family 16, member 11 (monocarboxylic acid transporter 11)	
Immunogen Catalog Number: AG24920	Calculated MW: 471 aa, 48 kDa	

Applications

Tested Applications:
Indirect ELISA, Cytometric bead array

Species Specificity:
Human

Product Information

83239-2-PBS targets SLC16A11 as part of a matched antibody pair:

MP00223-1: 83239-3-PBS capture and 83239-2-PBS detection (validated in Cytometric bead array)

MP00223-2: 83239-1-PBS capture and 83239-2-PBS detection (validated in Cytometric bead array)

MP00223-3: 83239-4-PBS capture and 83239-2-PBS detection (validated in Cytometric bead array)

Unconjugated rabbit recombinant monoclonal antibody in PBS only (BSA and azide free) storage buffer at a concentration of 1 mg/mL, ready for conjugation. Created using Proteintech's proprietary in-house recombinant technology. Recombinant production enables unrivalled batch-to-batch consistency, easy scale-up, and future security of supply.

This conjugation ready format makes antibodies ideal for use in many applications including: ELISAs, multiplex assays requiring matched pairs, mass cytometry, and multiplex imaging applications. Antibody use should be optimized by the end user for each application and assay.

Storage

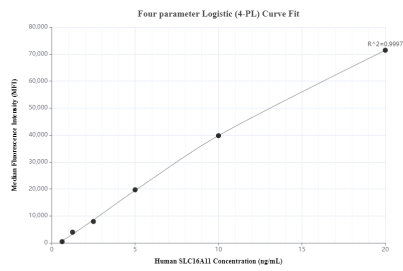
Storage:
Store at -80°C.

Storage Buffer:
PBS Only

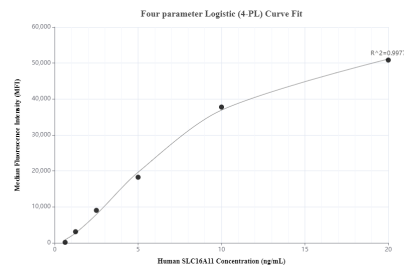
For technical support and original validation data for this product please contact:
T: 1 (888) 4PTGLAB (1-888-478-4522) (toll free in USA), or 1(312) 455-8498 (outside USA)
E: proteintech@ptglab.com
W: ptglab.com

This product is exclusively available under Proteintech Group brand and is not available to purchase from any other manufacturer.

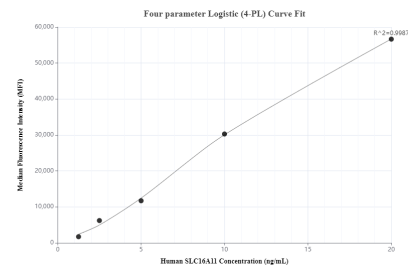
Selected Validation Data



Cytometric bead array standard curve ofMP00223-1, SLC16A11 Recombinant Matched Antibody Pair, PBS Only. Capture antibody: 83239-3-PBS. Detection antibody: 83239-2-PBS. Standard: Ag24920. Range: 0.625-20 ng/mL



Cytometric bead array standard curve ofMP00223-2, SLC16A11 Recombinant Matched Antibody Pair, PBS Only. Capture antibody: 83239-1-PBS. Detection antibody: 83239-2-PBS. Standard: Ag24920. Range: 0.625-20 ng/mL



Cytometric bead array standard curve ofMP00223-3, SLC16A11 Recombinant Matched Antibody Pair, PBS Only. Capture antibody: 83239-4-PBS. Detection antibody: 83239-2-PBS. Standard: Ag24920. Range: 1.25-20 ng/mL