

For Research Use Only

MLLT1 Recombinant antibody, PBS Only (Capture)

Catalog Number: 83242-3-PBS

Featured Product



Basic Information

Catalog Number:

83242-3-PBS

Size:

100ug, Concentration: 1mg/ml by Nanodrop;

Source:

Rabbit

Isotype:

IgG

Immunogen Catalog Number:

AG34210

GenBank Accession Number:

BC148806

GeneID (NCBI):

4298

UNIPROT ID:

Q03111

Full Name:

myeloid/lymphoid or mixed-lineage leukemia (trithorax homolog, Drosophila); translocated to, 1

Calculated MW:

62 kDa

Observed MW:

75 kDa

Purification Method:

Protein A purification

CloneNo.:

230519E7

Applications

Tested Applications:

WB, IF/ICC, Cytometric bead array, Sandwich ELISA, Indirect ELISA, Sample test

Species Specificity:

human

Product Information

83242-3-PBS targets MLLT1 as part of a matched antibody pair:

MP00158-1: 83242-3-PBS capture and 83242-2-PBS detection (validated in Cytometric bead array)

MP00158-2: 83242-3-PBS capture and 83242-4-PBS detection (validated in Cytometric bead array, Sandwich ELISA)

Unconjugated rabbit recombinant monoclonal antibody in PBS only (BSA and azide free) storage buffer at a concentration of 1 mg/mL, ready for conjugation. Created using Proteintech's proprietary in-house recombinant technology. Recombinant production enables unrivalled batch-to-batch consistency, easy scale-up, and future security of supply.

This conjugation ready format makes antibodies ideal for use in many applications including: ELISAs, multiplex assays requiring matched pairs, mass cytometry, and multiplex imaging applications. Antibody use should be optimized by the end user for each application and assay.

Storage

Storage:

Store at -80°C.

Storage Buffer:

PBS Only

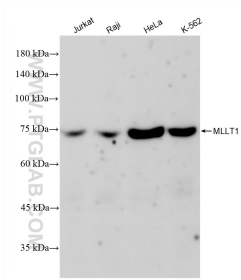
For technical support and original validation data for this product please contact:

T: 1 (888) 4PTGLAB (1-888-478-4522) (toll free in USA), or 1(312) 455-8498 (outside USA)

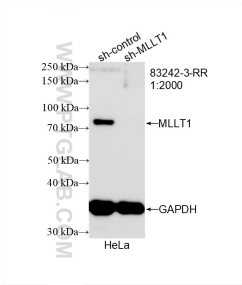
E: proteintech@ptglab.com
W: ptglab.com

This product is exclusively available under Proteintech Group brand and is not available to purchase from any other manufacturer.

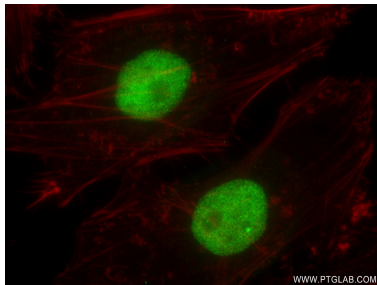
Selected Validation Data



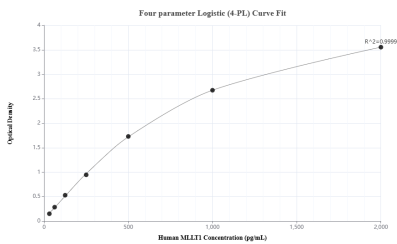
Various lysates were subjected to SDS PAGE followed by western blot with 83242-3-RR (MLLT1 antibody) at dilution of 1:10000 incubated at room temperature for 1.5 hours. This data was developed using the same antibody clone with 83242-3-PBS in a different storage buffer formulation.



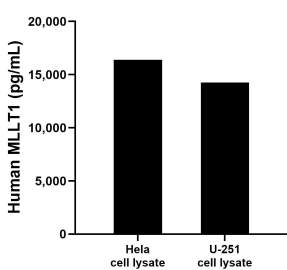
WB result of MLLT1 antibody (83242-3-RR; 1:2000; incubated at room temperature for 1.5 hours) with sh-Control and sh-MLLT1 transfected HeLa cells. This data was developed using the same antibody clone with 83242-3-PBS in a different storage buffer formulation.



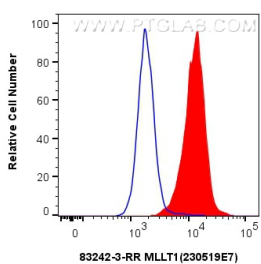
Immunofluorescent analysis of (4% PFA) fixed HeLa cells using MLLT1 antibody (83242-3-RR, Clone: 230519E7) at dilution of 1:250 and CoraLite®488-Conjugated AffiniPure Goat Anti-Rabbit IgG(H+L) (SA00013-2), CL594-Phalloidin (red). This data was developed using the same antibody clone with 83242-3-PBS in a different storage buffer formulation.



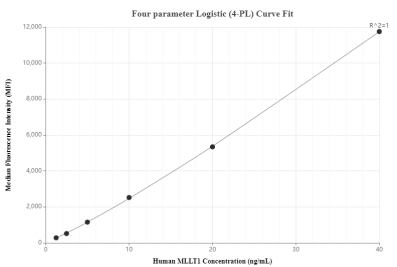
Sandwich ELISA standard curve of MP00158-2, Human MLLT1 Recombinant Matched Antibody Pair - PBS only. 83242-3-PBS was coated to a plate as the capture antibody and incubated with serial dilutions of standard Ag34210. 83242-4-PBS was HRP conjugated as the detection antibody. Range: 31.3-2000 pg/mL



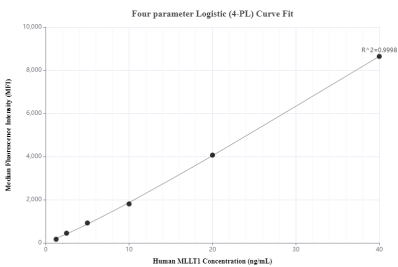
HeLa and U-251 cell lysates were measured. The human MLLT1 concentration of detected samples was determined to be 16384.9 pg/mL (based on a 6.4 mg/mL extract load) in HeLa cell lysate and 14242.8 pg/mL (based on a 6.4 mg/mL extract load) in U-251 cell lysate.



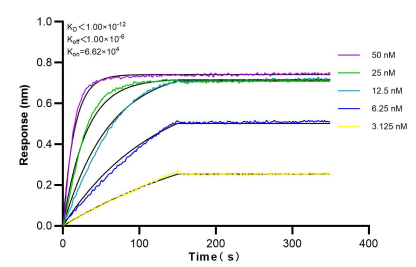
1x10⁶ HeLa cells were intracellularly stained with 0.25 ug MLLT1 Recombinant antibody (83242-3-RR, Clone:230519E7) and CoraLite®488-Conjugated Goat Anti-Rabbit IgG(H+L) (SA00013-2)(red), or 0.25 ug Rabbit IgG Isotype Control Recombinant Antibody (98136-1-RR, Clone: 240953C9) (blue). Cells were fixed and permeabilized with Transcription Factor Staining Buffer Kit (PF00011). This data was developed using the same antibody clone with 83242-3-PBS



Cytometric bead array standard curve of MP00158-1, MLLT1 Recombinant Matched Antibody Pair, PBS Only. Capture antibody: 83242-3-PBS. Detection antibody: 83242-2-PBS. Standard: Ag34210. Range: 1.25-40 ng/mL



Cytometric bead array standard curve of MP00158-2, MLLT1 Recombinant Matched Antibody Pair, PBS Only. Capture antibody: 83242-3-PBS. Detection antibody: 83242-4-PBS. Standard: Ag34210. Range: 1.25-40 ng/mL



Bi-layer interferometry (BLI) kinetic assays of 83242-3-RR against Human MLLT1 were performed. The affinity constant is below 1 pM.