

For Research Use Only

MLLT1 Recombinant antibody

Catalog Number: 83242-3-RR

Featured Product



Basic Information

Catalog Number:

83242-3-RR

Size:

100ul, Concentration: 1000 ug/ml by Nanodrop;

Source:

Rabbit

Isotype:

IgG

Immunogen Catalog Number:

AG34210

GenBank Accession Number:

BC148806

GeneID (NCBI):

4298

UNIPROT ID:

Q03111

Full Name:

myeloid/lymphoid or mixed-lineage leukemia (trithorax homolog, Drosophila); translocated to, 1

Calculated MW:

62 kDa

Observed MW:

75 kDa

Purification Method:

Protein A purification

CloneNo.:

230519E7

Recommended Dilutions:

WB 1:5000-1:50000

IF/ICC 1:125-1:500

Applications

Tested Applications:

WB, IF/ICC, ELISA

Species Specificity:

human

Positive Controls:

WB: Jurkat cells, HeLa cells, Raji cells, K-562 cells

IF/ICC: HeLa cells,

Storage

Storage:

Store at -20°C. Stable for one year after shipment.

Storage Buffer:

PBS with 0.02% sodium azide and 50% glycerol pH 7.3.

Aliquoting is unnecessary for -20°C storage

*** 20ul sizes contain 0.1% BSA

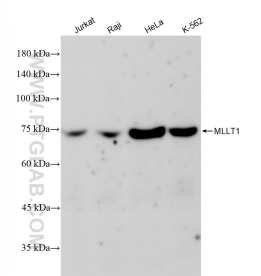
For technical support and original validation data for this product please contact:

T: 1 (888) 4PTGLAB (1-888-478-4522) (toll free in USA), or 1(312) 455-8498 (outside USA)

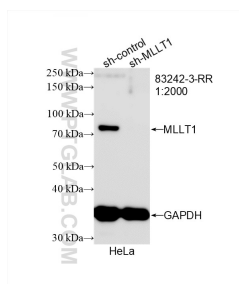
E: proteintech@ptglab.com
W: ptglab.com

This product is exclusively available under Proteintech Group brand and is not available to purchase from any other manufacturer.

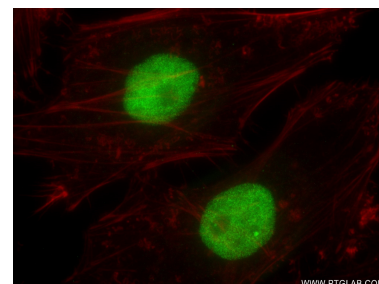
Selected Validation Data



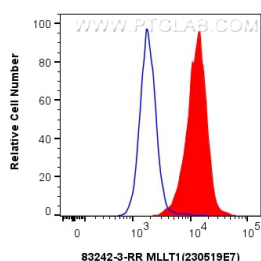
Various lysates were subjected to SDS PAGE followed by western blot with 83242-3-RR (MLLT1 antibody) at dilution of 1:10000 incubated at room temperature for 1.5 hours.



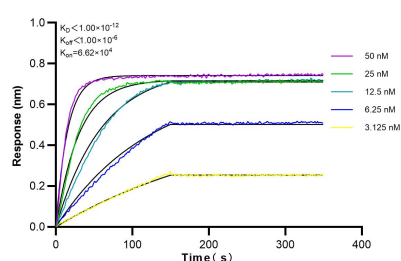
WB result of MLLT1 antibody (83242-3-RR; 1:2000; incubated at room temperature for 1.5 hours) with sh-Control and sh-MLLT1 transfected HeLa cells.



Immunofluorescent analysis of (4% PFA) fixed HeLa cells using MLLT1 antibody (83242-3-RR, Clone: 230519E7) at dilution of 1:250 and CoraLite®488-Conjugated AffiniPure Goat Anti-Rabbit IgG(H+L) (SA00013-2), CL594-Phalloidin (red).



1×10^6 HeLa cells were intracellularly stained with 0.25 μ g MLLT1 Recombinant antibody (83242-3-RR, Clone: 230519E7) and CoraLite®488-Conjugated Goat Anti-Rabbit IgG(H+L) (SA00013-2)(red), or 0.25 μ g Rabbit IgG Isotype Control Recombinant Antibody (98136-1-RR, Clone: 240953C9) (blue). Cells were fixed and permeabilized with Transcription Factor Staining Buffer Kit (PF00011).



Biolayer interferometry (BLI) kinetic assays of 83242-3-RR against Human MLLT1 were performed. The affinity constant is below 1 pM.