

For Research Use Only

# Mouse Cxcl15 Recombinant antibody, PBS Only (Detector)

Catalog Number: 83245-1-PBS



## Basic Information

<b>Catalog Number:</b> 83245-1-PBS	<b>GenBank Accession Number:</b> BC061138	<b>Purification Method:</b> Protein A purification
<b>Size:</b> 100ug , Concentration: 1mg/ml by Nanodrop;	<b>GeneID (NCBI):</b> 20309	<b>CloneNo.:</b> 240163A6
<b>Source:</b> Rabbit	<b>UNIPROT ID:</b> Q9WVL7	
<b>Isotype:</b> IgG	<b>Full Name:</b> chemokine (C-X-C motif) ligand 15	
<b>Immunogen Catalog Number:</b> AG33964	<b>Calculated MW:</b> 19 kDa	

## Applications

**Tested Applications:**  
WB, Indirect ELISA, Cytometric bead array

**Species Specificity:**  
Mouse

## Product Information

83245-1-PBS targets Cxcl15 as part of a matched antibody pair:

MP00193-2: 83245-3-PBS capture and 83245-1-PBS detection (validated in Cytometric bead array)

Unconjugated rabbit recombinant monoclonal antibody in PBS only (BSA and azide free) storage buffer at a concentration of 1 mg/mL, ready for conjugation. Created using Proteintech's proprietary in-house recombinant technology. Recombinant production enables unrivalled batch-to-batch consistency, easy scale-up, and future security of supply.

This conjugation ready format makes antibodies ideal for use in many applications including: ELISAs, multiplex assays requiring matched pairs, mass cytometry, and multiplex imaging applications. Antibody use should be optimized by the end user for each application and assay.

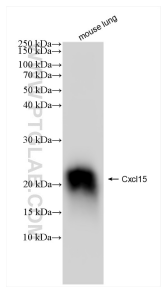
## Storage

**Storage:**  
Store at -80°C.  
**Storage Buffer:**  
PBS Only

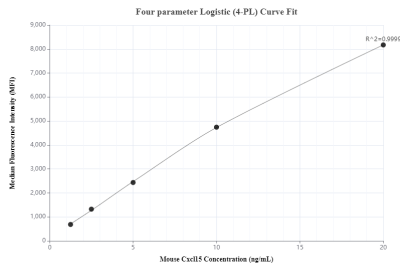
For technical support and original validation data for this product please contact:  
T: 1 (888) 4PTGLAB (1-888-478-4522) (toll free in USA), or 1(312) 455-8498 (outside USA)  
E: [proteintech@ptglab.com](mailto:proteintech@ptglab.com)  
W: [ptglab.com](http://ptglab.com)

This product is exclusively available under Proteintech Group brand and is not available to purchase from any other manufacturer.

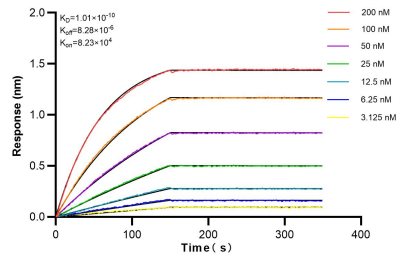
Selected Validation Data



mouse lung tissue were subjected to SDS PAGE followed by western blot with 83245-1-RR (Cxcl15 antibody) at dilution of 1:10000 incubated at room temperature for 1.5 hours. This data was developed using the same antibody clone with 83245-1-PBS in a different storage buffer formulation.



Cytometric bead array standard curve ofMP00193-2, Mouse Cxcl15 Recombinant Matched Antibody Pair, PBS Only. Capture antibody: 83245-3-PBS. Detection antibody: 83245-1-PBS. Standard: Ag33964. Range: 1.25-20 ng/mL



Biolayer interferometry (BLI) kinetic assays of 83245-1-RR against Mouse Cxcl15 were performed. The affinity constant is 0.101 nM.