

For Research Use Only

Cxcl15 Recombinant antibody

Catalog Number: 83245-1-RR



Basic Information

Catalog Number: 83245-1-RR	GenBank Accession Number: BC061138	Purification Method: Protein A purification
Size: 100ul , Concentration: 1000 ug/ml by Nanodrop;	GeneID (NCBI): 20309	CloneNo.: 240163A6
Source: Rabbit	UNIPROT ID: Q9WVL7	Recommended Dilutions: WB 1:5000-1:50000
Isotype: IgG	Full Name: chemokine (C-X-C motif) ligand 15	
Immunogen Catalog Number: AG33964	Calculated MW: 19 kDa	
	Observed MW: 19 kDa	

Applications

Tested Applications: WB, ELISA	Positive Controls: WB : mouse lung tissue,
Species Specificity: mouse	

Background Information

Cxcl15, also known as lungkine or WECHE, is a small cytokine belonging to the CXC chemokine family that has been described in the mouse. High levels of Cxcl15 mRNA were specifically detected in the lung and at lower levels in fetal lung tissue by Northern blot and in situ hybridization, suggesting a potential role for this chemokine during lung development. Moreover, the Cxcl15 protein is secreted into the airway spaces and induces the in vitro and in vivo migration of neutrophils, suggesting that it is involved in lung-specific neutrophil trafficking.

Storage

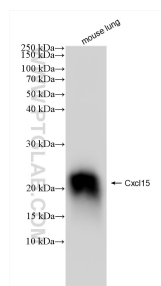
Storage:
Store at -20°C. Stable for one year after shipment.
Storage Buffer:
PBS with 0.02% sodium azide and 50% glycerol pH 7.3.
Aliquoting is unnecessary for -20°C storage

*** 20ul sizes contain 0.1% BSA

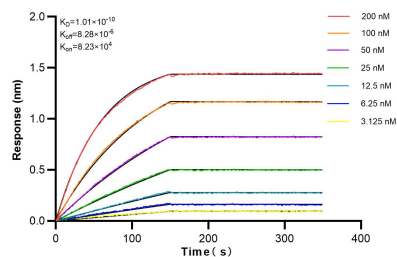
For technical support and original validation data for this product please contact:
T: 1 (888) 4PTGLAB (1-888-478-4522) (toll free in USA), or 1(312) 455-8498 (outside USA)
E: proteintech@ptglab.com
W: ptglab.com

This product is exclusively available under Proteintech Group brand and is not available to purchase from any other manufacturer.

Selected Validation Data



mouse lung tissue were subjected to SDS PAGE followed by western blot with 83245-1-RR (Cxcl15 antibody) at dilution of 1:10000 incubated at room temperature for 1.5 hours.



Biolayer interferometry (BLI) kinetic assays of 83245-1-RR against Mouse Cxcl15 were performed. The affinity constant is 0.101 nM.