

For Research Use Only

Mouse Cxcl15 Recombinant antibody, PBS Only (Detector)

Catalog Number: 83245-5-PBS



Basic Information

| | | |
|--|--|---|
| Catalog Number: 83245-5-PBS | GenBank Accession Number: BC061138 | Purification Method: Protein A purification |
| Size: 100ug , Concentration: 1 mg/ml by Nanodrop; | GeneID (NCBI): 20309 | CloneNo.: 240163G7 |
| Source: Rabbit | UNIPROT ID: Q9WVL7 | |
| Isotype: IgG | Full Name: chemokine (C-X-C motif) ligand 15 | |
| Immunogen Catalog Number: AG33964 | Calculated MW: 19 kDa | |

Applications

Tested Applications:
Sandwich ELISA, Indirect ELISA, Sample test

Species Specificity:
mouse

Product Information

83245-5-PBS targets Cxcl15 as part of a matched antibody pair:

MP00193-3: 83245-4-PBS capture and 83245-5-PBS detection (validated in Sandwich ELISA)

Unconjugated rabbit recombinant monoclonal antibody in PBS only (BSA and azide free) storage buffer at a concentration of 1 mg/mL, ready for conjugation. Created using Proteintech's proprietary in-house recombinant technology. Recombinant production enables unrivalled batch-to-batch consistency, easy scale-up, and future security of supply.

This conjugation ready format makes antibodies ideal for use in many applications including: ELISAs, multiplex assays requiring matched pairs, mass cytometry, and multiplex imaging applications. Antibody use should be optimized by the end user for each application and assay.

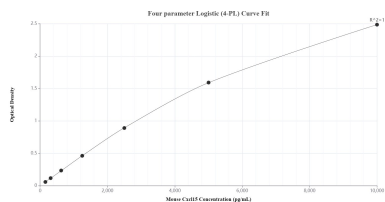
Storage

Storage:
Store at -80°C.
Storage Buffer:
PBS only, pH7.3

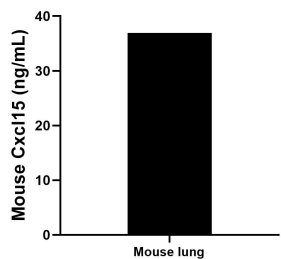
For technical support and original validation data for this product please contact:
T: 1 (888) 4PTGLAB (1-888-478-4522) (toll free in USA), or 1(312) 455-8498 (outside USA)
E: proteintech@ptglab.com
W: ptglab.com

This product is exclusively available under Proteintech Group brand and is not available to purchase from any other manufacturer.

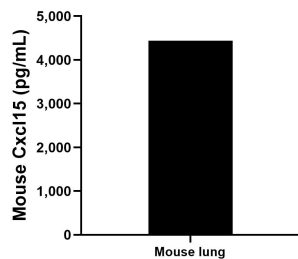
Selected Validation Data



Sandwich ELISA standard curve of MP00193-3, Mouse Cxcl15 Recombinant Matched Antibody Pair - PBS only. 83245-4-PBS was coated to a plate as the capture antibody and incubated with serial dilutions of standard Ag33964. 83245-5-PBS was HRP conjugated as the detection antibody. Range: 156-10000 pg/mL.



The mean Cxcl15 concentration was determined to be 36.9 ng/mL in mouse lung tissue extract based on a 3.0 mg/mL extract load.



Mouse lung were rinsed with enough PBS to cover the organs and kept on ice. Tissue was homogenized with a tissue homogenizer and cultured in RPMI 1640 supplemented with 10% fetal bovine serum, 2 mM L-glutamine, 100 U/mL penicillin, and 100 mg/mL streptomycin sulfate. Aliquots of the cell culture supernates were removed and assayed for mouse Cxcl15, and measured 4,435.8 pg/mL.