

For Research Use Only

APCDD1 Recombinant antibody, PBS Only (Capture/Detector)

Catalog Number: 83246-2-PBS



Basic Information

Catalog Number: 83246-2-PBS	GenBank Accession Number: BC053324	Purification Method: Protein A purification
Size: 100ug , Concentration: 1mg/ml by Nanodrop;	GeneID (NCBI): 147495	CloneNo.: 240085D8
Source: Rabbit	UNIPROT ID: Q8J025	
Isotype: IgG	Full Name: adenomatosis polyposis coli down-regulated 1	
Immunogen Catalog Number: AG10303	Calculated MW: 514 aa, 59 kDa	

Applications

Tested Applications:
Cytometric bead array, Sandwich ELISA, Indirect ELISA, Sample test

Species Specificity:
human

Product Information

83246-2-PBS targets APCDD1 as part of a matched antibody pair:

MP00199-1: 83246-3-PBS capture and 83246-2-PBS detection (validated in Cytometric bead array)

MP00199-2: 83246-2-PBS capture and 83246-1-PBS detection (validated in Cytometric bead array)

MP00199-3: 83246-4-PBS capture and 83246-2-PBS detection (validated in Cytometric bead array)

MP00199-4: 83246-1-PBS capture and 83246-2-PBS detection (validated in Sandwich ELISA)

Unconjugated rabbit recombinant monoclonal antibody in PBS only (BSA and azide free) storage buffer at a concentration of 1 mg/mL, ready for conjugation. Created using Proteintech's proprietary in-house recombinant technology. Recombinant production enables unrivalled batch-to-batch consistency, easy scale-up, and future security of supply.

This conjugation ready format makes antibodies ideal for use in many applications including: ELISAs, multiplex assays requiring matched pairs, mass cytometry, and multiplex imaging applications. Antibody use should be optimized by the end user for each application and assay.

Storage

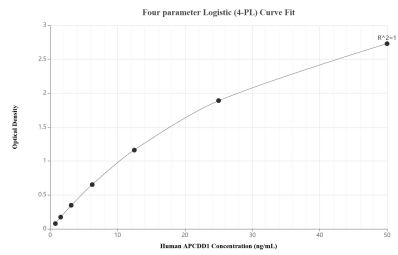
Storage:
Store at -80°C.

Storage Buffer:
PBS Only

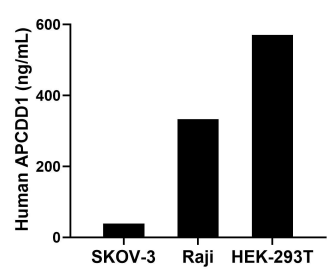
For technical support and original validation data for this product please contact:
T: 1 (888) 4PTGLAB (1-888-478-4522) (toll free in USA), or 1(312) 455-8498 (outside USA)
E: proteintech@ptglab.com
W: ptglab.com

This product is exclusively available under Proteintech Group brand and is not available to purchase from any other manufacturer.

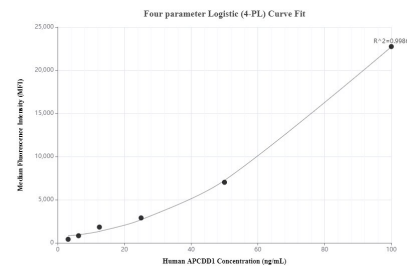
Selected Validation Data



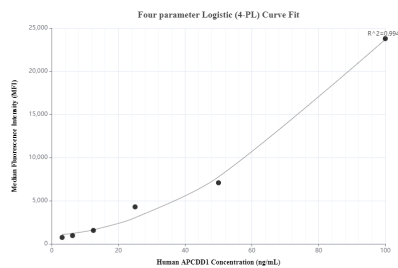
Sandwich ELISA standard curve of MP00199-4, Human APCDD1 Recombinant Matched Antibody Pair - PBS only. 83246-1-PBS was coated to a plate as the capture antibody and incubated with serial dilutions of standard Ag10303. 83246-2-PBS was HRP conjugated as the detection antibody. Range: 0.781-50 ng/mL



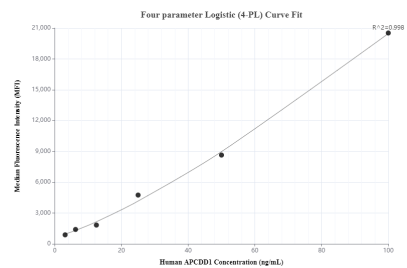
The mean APCDD1 concentration was determined to be 39.03 ng/mL in SKOV-3 cell extract based on a 4.20 mg/mL extract load, 333.27 ng/mL in Raji cell extract based on a 3.00 mg/mL extract load and 570.52 ng/mL in HEK-293T cell extract based on a 2.60 mg/mL extract load.



Cytofluorimetric bead array standard curve of MP00199-1, APCDD1 Recombinant Matched Antibody Pair, PBS Only. Capture antibody: 83246-3-PBS. Detection antibody: 83246-2-PBS. Standard: Ag10303. Range: 3.13-100 ng/mL



Cytofluorimetric bead array standard curve of MP00199-2, APCDD1 Recombinant Matched Antibody Pair, PBS Only. Capture antibody: 83246-2-PBS. Detection antibody: 83246-1-PBS. Standard: Ag10303. Range: 3.13-100 ng/mL



Cytofluorimetric bead array standard curve of MP00199-3, APCDD1 Recombinant Matched Antibody Pair, PBS Only. Capture antibody: 83246-4-PBS. Detection antibody: 83246-2-PBS. Standard: Ag10303. Range: 3.13-100 ng/mL