

For Research Use Only

CBX1 Recombinant antibody

Catalog Number: 83248-3-RR



Basic Information

Catalog Number:

83248-3-RR

Size:

100ul , Concentration: 500 ug/ml by Nanodrop;

Source:

Rabbit

Isotype:

IgG

Immunogen Catalog Number:

AG34901

GenBank Accession Number:

BC002609

GeneID (NCBI):

10951

UNIPROT ID:

P83916

Full Name:

chromobox homolog 1 (HP1 beta homolog Drosophila)

Calculated MW:

27 kDa

Observed MW:

27 kDa

Purification Method:

Protein A purification

CloneNo.:

240075E1

Recommended Dilutions:

WB 1:2000-1:10000

IF/ICC 1:125-1:500

Applications

Tested Applications:

WB, IF/ICC, FC (Intra), ELISA

Species Specificity:

human, mouse, rat

Positive Controls:

WB : CHO cells, PC-12 cells, MCF-7 cells, NIH/3T3 cells, mouse spleen tissue, mouse brain tissue

IF/ICC : HeLa cells, A431 cells

Background Information

One function of heterochromatin is the epigenetic silencing by sequestration of genes into transcriptionally repressed nuclear neighborhoods. Heterochromatin protein 1 (HP1) is a major component of heterochromatin and is a candidate for establishing and mediating gene silencing. This protein is expressed in all adult and embryonic tissues, as a homodimer.

Storage

Storage:

Store at -20°C. Stable for one year after shipment.

Storage Buffer:

PBS with 0.02% sodium azide and 50% glycerol pH 7.3.

Aliquoting is unnecessary for -20°C storage

*** 20ul sizes contain 0.1% BSA

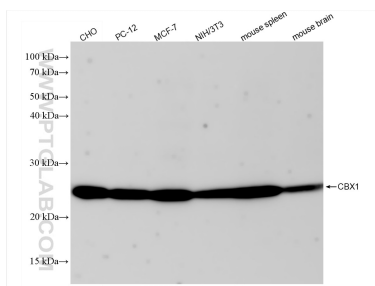
For technical support and original validation data for this product please contact:

T: 1 (888) 4PTGLAB (1-888-478-4522) (toll free in USA), or 1(312) 455-8498 (outside USA)

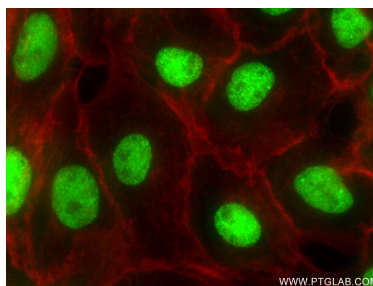
E: proteintech@ptglab.com
W: ptglab.com

This product is exclusively available under Proteintech Group brand and is not available to purchase from any other manufacturer.

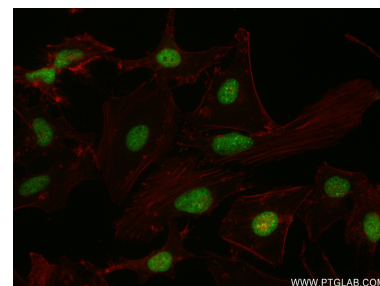
Selected Validation Data



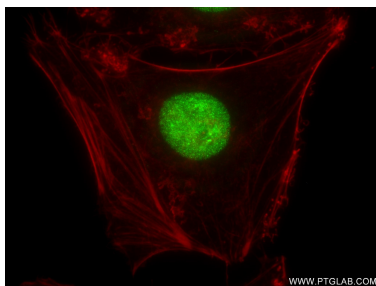
Various lysates were subjected to SDS PAGE followed by western blot with 83248-3-RR (CBX1 antibody) at dilution of 1:5000 incubated at room temperature for 1.5 hours.



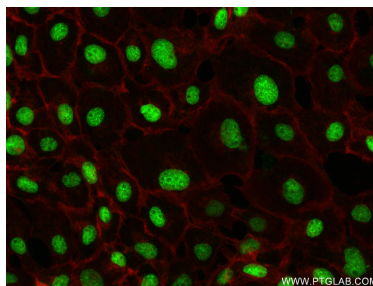
Immunofluorescent analysis of (4% PFA) fixed A431 cells using CBX1 antibody (83248-3-RR, Clone: 240075E1) at dilution of 1:250 and CoraLite®488-Conjugated Goat Anti-Mouse IgG(H+L) (SA00013-1), CL594-Phalloidin (red).



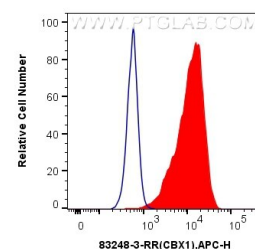
Immunofluorescent analysis of (4% PFA) fixed HeLa cells using CBX1 antibody (83248-3-RR, Clone: 240075E1) at dilution of 1:250 and CoraLite®488-Conjugated Goat Anti-Mouse IgG(H+L) (SA00013-1), CL594-Phalloidin (red).



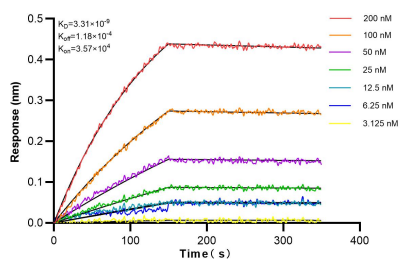
Immunofluorescent analysis of (4% PFA) fixed HeLa cells using CBX1 antibody (83248-3-RR, Clone: 240075E1) at dilution of 1:250 and CoraLite®488-Conjugated Goat Anti-Mouse IgG(H+L) (SA00013-1), CL594-Phalloidin (red).



Immunofluorescent analysis of (4% PFA) fixed A431 cells using CBX1 antibody (83248-3-RR, Clone: 240075E1) at dilution of 1:250 and CoraLite®488-Conjugated Goat Anti-Mouse IgG(H+L) (SA00013-1), CL594-Phalloidin (red).



1x10⁶ HeLa cells were intracellularly stained with 0.25 ug CBX1 Recombinant antibody (83248-3-RR, Clone:240075E1) and APC-Conjugated Goat Anti-Rabbit IgG(H+L)(red), or 0.25 ug Isotype Control (blue). Cells were fixed and permeabilized with Transcription Factor Staining Buffer Kit (PF00011).



Biolayer interferometry (BLI) kinetic assays of 83248-3-RR against Human CBX1 were performed. The affinity constant is 3.31 nM.