

For Research Use Only

# Ribophorin I Recombinant antibody, PBS Only (Capture/Detector)

Catalog Number: 83250-1-PBS



## Basic Information

|  |  |   |
|--|--|---|
| <b>Catalog Number:</b><br>83250-1-PBS                      | <b>GenBank Accession Number:</b><br>BC010839 | <b>Purification Method:</b><br>Protein A purification |
| <b>Size:</b><br>100ug , Concentration: 1mg/ml by Nanodrop; | <b>GeneID (NCBI):</b><br>6184                | <b>CloneNo.:</b><br>240044B1                          |
| <b>Source:</b><br>Rabbit                                   | <b>UNIPROT ID:</b><br>P04843                 |   |
| <b>Isotype:</b><br>IgG                                     | <b>Full Name:</b><br>ribophorin I            |   |
| <b>Immunogen Catalog Number:</b><br>AG3576                 | <b>Calculated MW:</b><br>69 kDa              |   |

## Applications

**Tested Applications:**  
Cytometric bead array, Sandwich ELISA, Indirect ELISA, Sample test

**Species Specificity:**  
human

## Product Information

83250-1-PBS targets Ribophorin I as part of a matched antibody pair:

MP00231-1: 83250-1-PBS capture and 83250-3-PBS detection (validated in Cytometric bead array)

MP00231-2: 83250-2-PBS capture and 83250-1-PBS detection (validated in Cytometric bead array)

MP00231-3: 83250-1-PBS capture and 83250-2-PBS detection (validated in Sandwich ELISA)

Unconjugated rabbit recombinant monoclonal antibody in PBS only (BSA and azide free) storage buffer at a concentration of 1 mg/mL, ready for conjugation. Created using Proteintech's proprietary in-house recombinant technology. Recombinant production enables unrivalled batch-to-batch consistency, easy scale-up, and future security of supply.

This conjugation ready format makes antibodies ideal for use in many applications including: ELISAs, multiplex assays requiring matched pairs, mass cytometry, and multiplex imaging applications. Antibody use should be optimized by the end user for each application and assay.

## Storage

**Storage:**  
Store at -80°C.

**Storage Buffer:**  
PBS Only

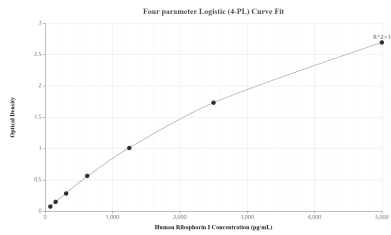
For technical support and original validation data for this product please contact:

T: 1 (888) 4PTGLAB (1-888-478-4522) (toll free in USA), or 1(312) 455-8498 (outside USA)

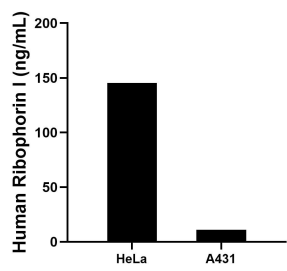
E: [proteintech@ptglab.com](mailto:proteintech@ptglab.com)  
W: [ptglab.com](http://ptglab.com)

This product is exclusively available under Proteintech Group brand and is not available to purchase from any other manufacturer.

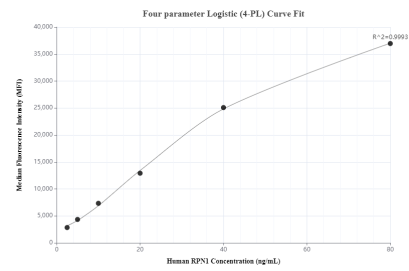
Selected Validation Data



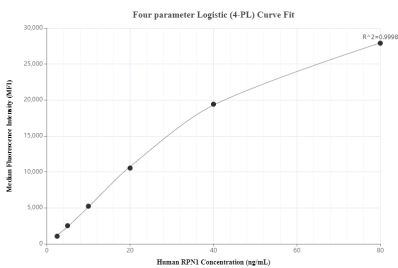
Sandwich ELISA standard curve of MP00231-3, Human Ribophorin I Recombinant Matched Antibody Pair - PBS only. 83250-1-PBS was coated to a plate as the capture antibody and incubated with serial dilutions of standard Ag3576. 83250-2-PBS was HRP conjugated as the detection antibody. Range: 78.1-5000 pg/mL



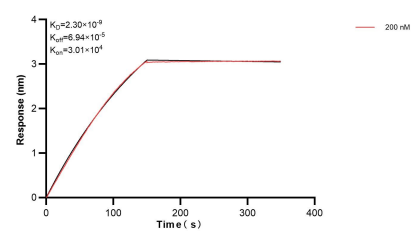
The mean Ribophorin I concentration was determined to be 145.4 ng/mL in HeLa cell extract based on a 1.2 mg/mL extract load and 11.0 ng/mL in A431 cell extract based on a 1.5 mg/mL extract load.



Cytometric bead array standard curve of MP00231-1, RPN1 Recombinant Matched Antibody Pair, PBS Only. Capture antibody: 83250-1-PBS. Detection antibody: 83250-3-PBS. Standard: Ag3576. Range: 2.5-80 ng/mL



Cytometric bead array standard curve of MP00231-2, RPN1 Recombinant Matched Antibody Pair, PBS Only. Capture antibody: 83250-2-PBS. Detection antibody: 83250-1-PBS. Standard: Ag3576. Range: 2.5-80 ng/mL



Biolayer interferometry (BLI) kinetic assay of 83250-1-PBS against Human Ribophorin I was performed. The affinity constant is 2.30 nM.