

For Research Use Only

# Ribophorin I Recombinant antibody, PBS Only (Capture/Detector)

Catalog Number: 83250-2-PBS



## Basic Information

**Catalog Number:**

83250-2-PBS

**Size:**

100ug, Concentration: 1mg/ml by  
Nanodrop;

**Source:**

Rabbit

**Isotype:**

IgG

**Immunogen Catalog Number:**

AG3576

**GenBank Accession Number:**

BC010839

**GeneID (NCBI):**

6184

**UNIPROT ID:**

P04843

**Full Name:**

ribophorin I

**Calculated MW:**

69 kDa

**Observed MW:**

66-69 kDa

**Purification Method:**

Protein A purification

**CloneNo.:**

240044D4

## Applications

**Tested Applications:**

WB, IHC, FC (Intra), Cytometric bead array, Sandwich  
ELISA, Indirect ELISA, Sample test

**Species Specificity:**

human, mouse, rat

## Product Information

83250-2-PBS targets Ribophorin I as part of a matched antibody pair:

MP00231-2: 83250-2-PBS capture and 83250-1-PBS detection (validated in Cytometric bead array)

MP00231-3: 83250-1-PBS capture and 83250-2-PBS detection (validated in Sandwich ELISA)

Unconjugated rabbit recombinant monoclonal antibody in PBS only (BSA and azide free) storage buffer at a concentration of 1 mg/mL, ready for conjugation. Created using Proteintech's proprietary in-house recombinant technology. Recombinant production enables unrivalled batch-to-batch consistency, easy scale-up, and future security of supply.

This conjugation ready format makes antibodies ideal for use in many applications including: ELISAs, multiplex assays requiring matched pairs, mass cytometry, and multiplex imaging applications. Antibody use should be optimized by the end user for each application and assay.

## Storage

**Storage:**

Store at -80°C.

**Storage Buffer:**

PBS Only

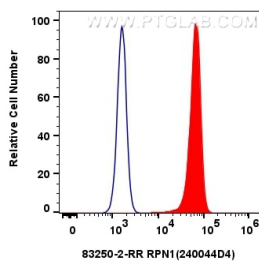
For technical support and original validation data for this product please contact:

T: 1 (888) 4PTGLAB (1-888-478-4522) (toll free  
in USA), or 1(312) 455-8498 (outside USA)

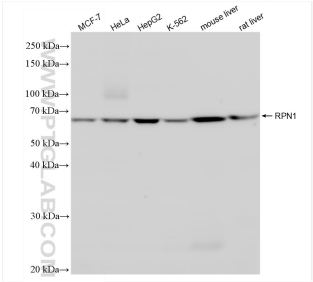
E: [proteintech@ptglab.com](mailto:proteintech@ptglab.com)  
W: [ptglab.com](http://ptglab.com)

This product is exclusively available under Proteintech Group brand and is not available to purchase from any other manufacturer.

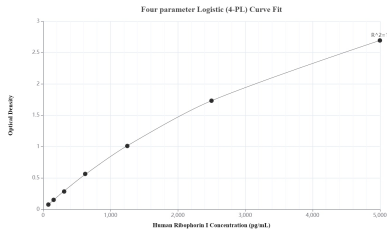
Selected Validation Data



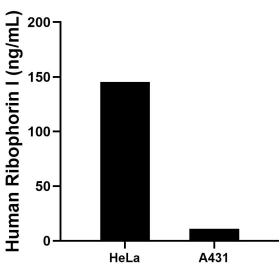
1x10<sup>6</sup> HeLa cells were intracellularly stained with 0.25 ug RPN1 Recombinant antibody (83250-2-RR, Clone:240044D4) and CoraLite®488-Conjugated AffiniPure Goat Anti-Rabbit IgG(H+L) (SA00013-2) (red), or 0.25 ug Isotype Control (blue). Cells were fixed with 4% PFA and permeabilized with Flow Cytometry Perm Buffer (PF00011-C). This data was developed using the same antibody clone with 83250-2-PBS in a different storage buffer formulation.



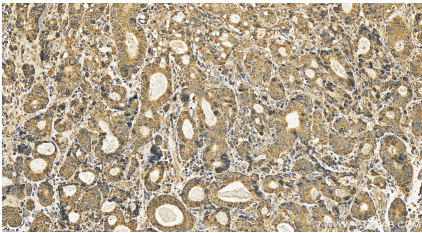
Various lysates were subjected to SDS PAGE followed by western blot with 83250-2-RR (RPN1 antibody) at dilution of 1:10000 incubated at room temperature for 1.5 hours. This data was developed using the same antibody clone with 83250-2-PBS in a different storage buffer formulation.



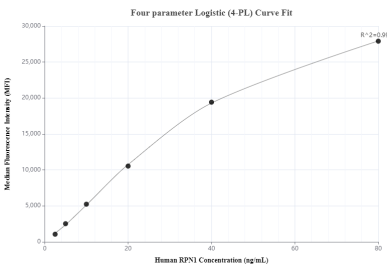
Sandwich ELISA standard curve of MP00231-3, Human Ribophorin I Recombinant Matched Antibody Pair - PBS only. 83250-1-PBS was coated to a plate as the capture antibody and incubated with serial dilutions of standard Ag3576. 83250-2-PBS was HRP conjugated as the detection antibody. Range: 78.1-5000 pg/mL.



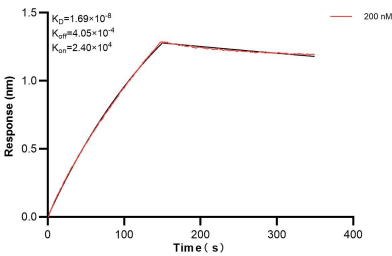
The mean Ribophorin I concentration was determined to be 145.4 ng/mL in HeLa cell extract based on a 1.2 mg/mL extract load and 11.0 ng/mL in A431 cell extract based on a 1.5 mg/mL extract load.



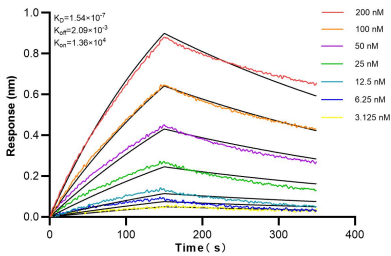
Immunohistochemical analysis of paraffin-embedded human stomach cancer tissue slide using 83250-2-RR (Ribophorin I antibody) at dilution of 1:500 (under 20x lens). Heat mediated antigen retrieval with Tris-EDTA buffer(pH9). This data was developed using the same antibody clone with 83250-2-PBS in a different storage buffer formulation.



Cytometric bead array standard curve of MP00231-2, RPN1 Recombinant Matched Antibody Pair, PBS Only. Capture antibody: 83250-2-PBS. Detection antibody: 83250-1-PBS. Standard: Ag3576. Range: 2.5-80 ng/mL.



Biolayer interferometry (BLI) kinetic assay of 83250-2-PBS against Human Ribophorin I was performed. The affinity constant is 1.69 nM.



Biolayer interferometry (BLI) kinetic assays of 83250-2-RR against Human RPN1 were performed. The affinity constant is 0.154 uM.