

For Research Use Only

# Ribophorin I Recombinant antibody

Catalog Number: 83250-2-RR



## Basic Information

<b>Catalog Number:</b> 83250-2-RR	<b>GenBank Accession Number:</b> BC010839	<b>Purification Method:</b> Protein A purification
<b>Size:</b> 100ul , Concentration: 1000 ug/ml by Nanodrop;	<b>GeneID (NCBI):</b> 6184	<b>CloneNo.:</b> 240044D4
<b>Source:</b> Rabbit	<b>UNIPROT ID:</b> P04843	<b>Recommended Dilutions:</b> WB 1:5000-1:50000 IHC 1:250-1:1000
<b>Isotype:</b> IgG	<b>Full Name:</b> ribophorin I	
<b>Immunogen Catalog Number:</b> AG3576	<b>Calculated MW:</b> 69 kDa	
	<b>Observed MW:</b> 66-69 kDa	

## Applications

**Tested Applications:**  
WB, IHC, FC (Intra), ELISA

**Species Specificity:**  
human, mouse, rat

**Note-IHC: suggested antigen retrieval with TE buffer pH 9.0; (\*) Alternatively, antigen retrieval may be performed with citrate buffer pH 6.0**

**Positive Controls:**

**WB :** MCF-7 cells, HeLa cells, HepG2 cells, K-562 cells, mouse liver tissue, rat liver tissue

**IHC :** human stomach cancer tissue,

## Storage

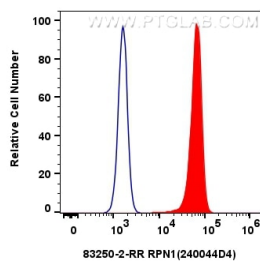
**Storage:**  
Store at -20°C. Stable for one year after shipment.  
**Storage Buffer:**  
PBS with 0.02% sodium azide and 50% glycerol pH 7.3.  
Aliquoting is unnecessary for -20°C storage

\*\*\* 20ul sizes contain 0.1% BSA

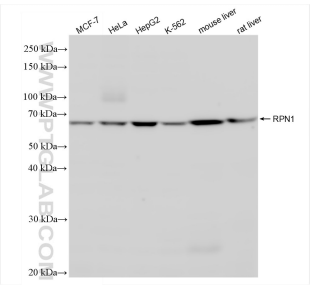
For technical support and original validation data for this product please contact:  
T: 1 (888) 4PTGLAB (1-888-478-4522) (toll free in USA), or 1(312) 455-8498 (outside USA)  
E: [proteintech@ptglab.com](mailto:proteintech@ptglab.com)  
W: [ptglab.com](http://ptglab.com)

This product is exclusively available under Proteintech Group brand and is not available to purchase from any other manufacturer.

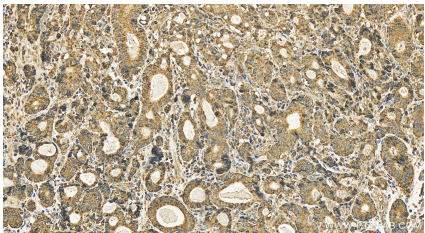
Selected Validation Data



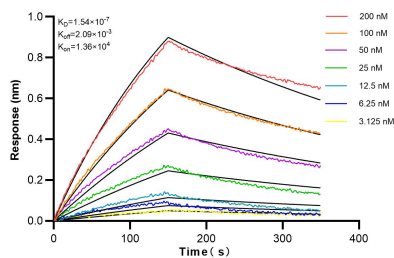
1x10<sup>6</sup> HeLa cells were intracellularly stained with 0.25 ug RPN1 Recombinant antibody (83250-2-RR, Clone:240044D4) and CoraLite®488-Conjugated AffiniPure Goat Anti-Rabbit IgG(H+L) (SA00013-2) (red), or 0.25 ug Isotype Control (blue). Cells were fixed with 4% PFA and permeabilized with Flow Cytometry Perm Buffer (PF00011-C).



Various lysates were subjected to SDS PAGE followed by western blot with 83250-2-RR (RPN1 antibody) at dilution of 1:10000 incubated at room temperature for 1.5 hours.



Immunohistochemical analysis of paraffin-embedded human stomach cancer tissue slide using 83250-2-RR (Ribophorin I antibody) at dilution of 1:500 (under 20x lens). Heat mediated antigen retrieval with Tris-EDTA buffer(pH9).



Biolayer interferometry (BLI) kinetic assays of 83250-2-RR against Human RPN1 were performed. The affinity constant is 0.154 uM.