

For Research Use Only

# NRG1, isoform Alpha Recombinant antibody, PBS Only (Detector)

Catalog Number: 83251-2-PBS



## Basic Information

<b>Catalog Number:</b> 83251-2-PBS	<b>GenBank Accession Number:</b> BC007675	<b>Purification Method:</b> Protein A purification
<b>Size:</b> 100ug , Concentration: 1mg/ml by Nanodrop;	<b>GeneID (NCBI):</b> 3084	<b>CloneNo.:</b> 240067A6
<b>Source:</b> Rabbit	<b>UNIPROT ID:</b> Q02297	
<b>Isotype:</b> IgG	<b>Full Name:</b> neuregulin 1	
<b>Immunogen Catalog Number:</b> AG35114	<b>Calculated MW:</b> 70 kDa	
	<b>Observed MW:</b> 70 kDa	

## Applications

**Tested Applications:**  
IF/ICC, IF-P, Cytometric bead array, Indirect ELISA

**Species Specificity:**  
human

## Product Information

83251-2-PBS targets NRG1, isoform Alpha as part of a matched antibody pair:

MP00232-1: 83251-3-PBS capture and 83251-2-PBS detection (validated in Cytometric bead array)

Unconjugated rabbit recombinant monoclonal antibody in PBS only (BSA and azide free) storage buffer at a concentration of 1 mg/mL, ready for conjugation. Created using Proteintech's proprietary in-house recombinant technology. Recombinant production enables unrivalled batch-to-batch consistency, easy scale-up, and future security of supply.

This conjugation ready format makes antibodies ideal for use in many applications including: ELISAs, multiplex assays requiring matched pairs, mass cytometry, and multiplex imaging applications. Antibody use should be optimized by the end user for each application and assay.

## Background Information

Neuregulin 1 (NRG1) is a trophic factor that has been implicated in neural development, neurotransmission, and synaptic plasticity. NRG1 has multiple isoforms that are generated by usage of different promoters and alternative splicing of a single gene. NRG1 and its receptor ErbB tyrosine kinase are expressed not only in the developing nervous system, but also in the adult brain. The immunogen of this antibody is against NRG1 isoform Alpha.

## Storage

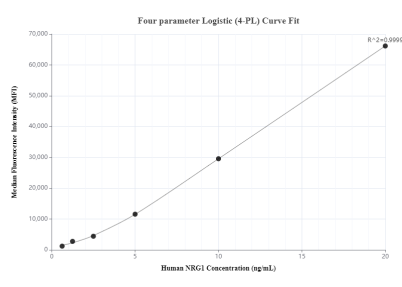
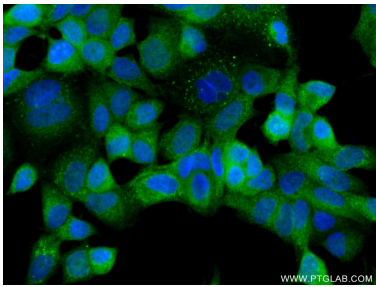
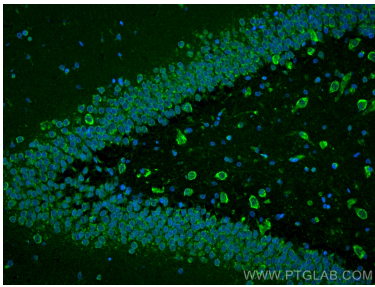
**Storage:**  
Store at -80°C.

**Storage Buffer:**  
PBS Only

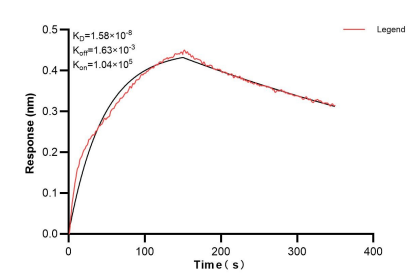
For technical support and original validation data for this product please contact:  
T: 1 (888) 4PTGLAB (1-888-478-4522) (toll free in USA), or 1(312) 455-8498 (outside USA)  
E: [proteintech@ptglab.com](mailto:proteintech@ptglab.com)  
W: [ptglab.com](http://ptglab.com)

This product is exclusively available under Proteintech Group brand and is not available to purchase from any other manufacturer.

Selected Validation Data



Immunofluorescent analysis of (4% PFA) fixed paraffin-embedded rat brain tissue using NRG1, isoform Alpha antibody (83251-2-RR, Clone: 240067A6) at dilution of 1:500 and Multi-Ab CoraLite® Plus 488-Goat Anti-Rabbit Recombinant Secondary Antibody (H+L) (RGAR002). Heat mediated antigen retrieval with Tris-EDTA buffer (pH 9.0). This data was developed using the same antibody clone with 83251-2-PBS in a different storage buffer formulation.



Biolayer interferometry (BLI) kinetic assay of 83251-2-PBS against Human NRG1, isoform Alpha is performed. The affinity constant is 16.9 nM.