

For Research Use Only

KCNJ15 Recombinant antibody, PBS Only

Catalog Number: 83257-5-PBS



Basic Information

Catalog Number: 83257-5-PBS	GenBank Accession Number: BC013327	Purification Method: Protein A purification
Size: 100ug , Concentration: 1 mg/ml by Nanodrop;	GeneID (NCBI): 3772	CloneNo.: 240141C3
Source: Rabbit	UNIPROT ID: Q99712	
Isotype: IgG	Full Name: potassium inwardly-rectifying channel, subfamily J, member 15	
Immunogen Catalog Number: AG34655	Calculated MW: 375 aa, 43 kDa	
	Observed MW: 43 kDa	

Applications

Tested Applications:
WB, IHC, ELISA

Species Specificity:
human

Background Information

KCNJ15, also named as KIR1.3, KIR4.2, and IRKK, is a multi-pass membrane protein belonging to the inwardly-rectifying potassium channel (KIR) family. KIR channels perform functions as diverse as the regulation of resting membrane potential, maintenance of potassium ions homeostasis, control of heart rate and hormone secretion. Cloned from human kidney, the KCNJ15 gene is localized on chromosome 21 in the Down syndrome chromosome region 1 (DCR1) and has been identified as a type 2 diabetes-associated risk gene. The gene is most readily expressed in the pancreas and kidney and less in the lung. (PMID: 8995301; 9299242; 20085713)

Storage

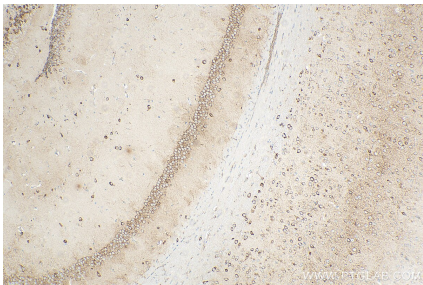
Storage:
Store at -80°C.

Storage Buffer:
PBS Only

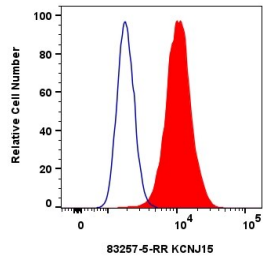
For technical support and original validation data for this product please contact:
T: 1 (888) 4PTGLAB (1-888-478-4522) (toll free in USA), or 1(312) 455-8498 (outside USA)
E: proteintech@ptglab.com
W: ptglab.com

This product is exclusively available under Proteintech Group brand and is not available to purchase from any other manufacturer.

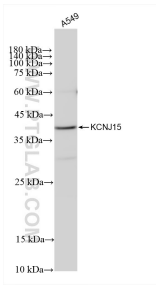
Selected Validation Data



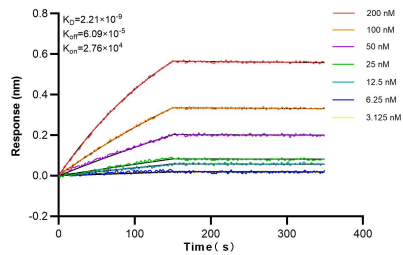
Immunohistochemical analysis of paraffin-embedded mouse brain tissue slide using 83257-5-RR (KCNJ15 antibody) at dilution of 1:200 (under 10x lens). Heat mediated antigen retrieval with Tris-EDTA buffer (pH 9.0). This data was developed using the same antibody clone with 83257-5-PBS in a different storage buffer formulation.



1x10⁶ HepG2 cells were intracellularly stained with 0.25 ug KCNJ15 Recombinant antibody (83257-5-RR, Clone:240141C3) and CoraLite®488-Conjugated Goat Anti-Rabbit IgG(H+L) (SA00013-2) (red), or 0.25 ug Control Antibody (blue). Cells were fixed with 4% PFA and permeabilized with Flow Cytometry Perm Buffer (PF00011-C). This data was developed using the same antibody clone with 83257-5-PBS in a different storage buffer formulation.



A549 cells were subjected to SDS PAGE followed by western blot with 83257-5-RR (KCNJ15 antibody) at dilution of 1:1000 incubated at room temperature for 1.5 hours. This data was developed using the same antibody clone with 83257-5-PBS in a different storage buffer formulation.



Biolayer interferometry (BLI) kinetic assays of 83257-5-RR against Human KCNJ15 were performed. The affinity constant is 0.221 nM.