

For Research Use Only

KCNJ15 Recombinant antibody

Catalog Number: 83257-5-RR



Basic Information

Catalog Number: 83257-5-RR	GenBank Accession Number: BC013327	Purification Method: Protein A purification
Size: 100ul , Concentration: 1000 ug/ml by Nanodrop;	GeneID (NCBI): 3772	CloneNo.: 240141C3
Source: Rabbit	UNIPROT ID: Q99712	Recommended Dilutions: WB 1:500-1:2000 IHC 1:50-1:500
Isotype: IgG	Full Name: potassium inwardly-rectifying channel, subfamily J, member 15	
Immunogen Catalog Number: AG34655	Calculated MW: 375 aa, 43 kDa	
	Observed MW: 43 kDa	

Applications

Tested Applications: WB, IHC, ELISA	Positive Controls:
Species Specificity: human	WB : A549 cells,
Note-IHC: suggested antigen retrieval with TE buffer pH 9.0; (*) Alternatively, antigen retrieval may be performed with citrate buffer pH 6.0	IHC : mouse brain tissue,

Background Information

KCNJ15, also named as KIR1.3, KIR4.2, and IRKK, is a multi-pass membrane protein belonging to the inwardly-rectifying potassium channel (KIR) family. KIR channels perform functions as diverse as the regulation of resting membrane potential, maintenance of potassium ions homeostasis, control of heart rate and hormone secretion. Cloned from human kidney, the KCNJ15 gene is localized on chromosome 21 in the Down syndrome chromosome region 1 (DCR1) and has been identified as a type 2 diabetes-associated risk gene. The gene is most readily expressed in the pancreas and kidney and less in the lung. (PMID: 8995301; 9299242; 20085713)

Storage

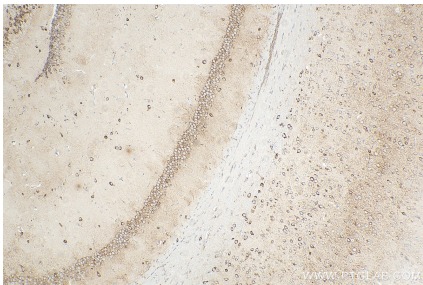
Storage:
Store at -20°C. Stable for one year after shipment.
Storage Buffer:
PBS with 0.02% sodium azide and 50% glycerol pH 7.3.
Aliquoting is unnecessary for -20°C storage

*** 20ul sizes contain 0.1% BSA

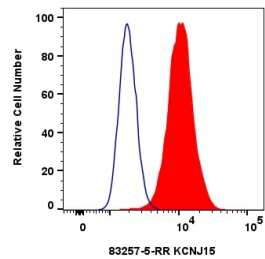
For technical support and original validation data for this product please contact:
T: 1 (888) 4PTGLAB (1-888-478-4522) (toll free in USA), or 1(312) 455-8498 (outside USA)
E: proteintech@ptglab.com
W: ptglab.com

This product is exclusively available under Proteintech Group brand and is not available to purchase from any other manufacturer.

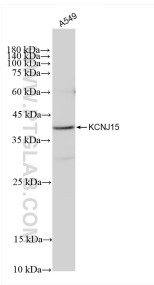
Selected Validation Data



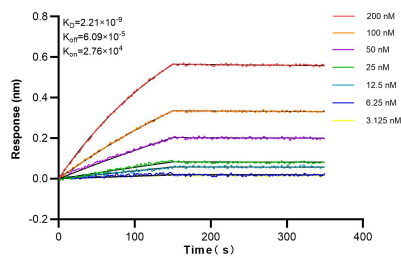
Immunohistochemical analysis of paraffin-embedded mouse brain tissue slide using 83257-5-RR (KCNJ15 antibody) at dilution of 1:200 (under 10x lens). Heat mediated antigen retrieval with Tris-EDTA buffer (pH 9.0).



1x10⁶ HepG2 cells were intracellularly stained with 0.25 ug KCNJ15 Recombinant antibody (83257-5-RR, Clone:240141C3) and CoraLite®488-Conjugated Goat Anti-Rabbit IgG(H+L) (SA00013-2) (red), or 0.25 ug Control Antibody (blue). Cells were fixed with 4% PFA and permeabilized with Flow Cytometry Perm Buffer (PF00011-C).



A549 cells were subjected to SDS PAGE followed by western blot with 83257-5-RR (KCNJ15 antibody) at dilution of 1:1000 incubated at room temperature for 1.5 hours.



Biolayer interferometry (BLI) kinetic assays of 83257-5-RR against Human KCNJ15 were performed. The affinity constant is 0.221 nM.