

For Research Use Only

# SNAP25 Recombinant antibody, PBS Only



Catalog Number: 83259-5-PBS

## Basic Information

<b>Catalog Number:</b> 83259-5-PBS	<b>GenBank Accession Number:</b> BC010647	<b>Purification Method:</b> Protein A purification
<b>Size:</b> 100ug , Concentration: 1 mg/ml by Nanodrop;	<b>GeneID (NCBI):</b> 6616	<b>CloneNo.:</b> 240069F12
<b>Source:</b> Rabbit	<b>UNIPROT ID:</b> P60880	
<b>Isotype:</b> IgG	<b>Full Name:</b> synaptosomal-associated protein, 25kDa	
<b>Immunogen Catalog Number:</b> AG6695	<b>Calculated MW:</b> 23 kDa	

## Applications

**Tested Applications:**  
WB, IF, Indirect ELISA

**Species Specificity:**  
Human

## Storage

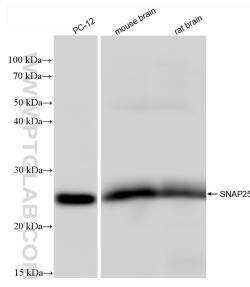
**Storage:**  
Store at -80°C.

**Storage Buffer:**  
PBS Only

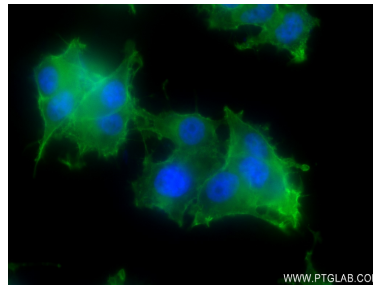
For technical support and original validation data for this product please contact:  
T: 1 (888) 4PTGLAB (1-888-478-4522) (toll free in USA), or 1(312) 455-8498 (outside USA)      E: [proteintech@ptglab.com](mailto:proteintech@ptglab.com)      W: [ptglab.com](http://ptglab.com)

This product is exclusively available under Proteintech Group brand and is not available to purchase from any other manufacturer.

## Selected Validation Data



Various lysates were subjected to SDS PAGE followed by western blot with 83259-5-RR (SNAP25 antibody) at dilution of 1:10000 incubated at room temperature for 1.5 hours. This data was developed using the same antibody clone with 83259-5-PBS in a different storage buffer formulation.



Immunofluorescent analysis of (4% PFA) fixed PC-12 cells using SNAP25 antibody (83259-5-RR, Clone: 240069F12 ) at dilution of 1:250 and CoraLite®488-Conjugated AffiniPure Goat Anti-Mouse IgG(H+L) (SA00013-1). This data was developed using the same antibody clone with 83259-5-PBS in a different storage buffer formulation.