

# PLK1 Recombinant antibody

Catalog Number: 83260-5-RR

## Basic Information

<b>Catalog Number:</b> 83260-5-RR	<b>GenBank Accession Number:</b> NM_005030	<b>Purification Method:</b> Protein A purification
<b>Size:</b> 100ul , Concentration: 1000 µg/ml by Nanodrop;	<b>GeneID (NCBI):</b> 5347	<b>CloneNo.:</b> 240092B10
<b>Source:</b> Rabbit	<b>UNIPROT ID:</b> P53350	<b>Recommended Dilutions:</b> WB 1:5000-1:50000 IF/ICC 1:125-1:500
<b>Isotype:</b> IgG	<b>Full Name:</b> polo-like kinase 1 (Drosophila)	
	<b>Calculated MW:</b> 68 kDa	
	<b>Observed MW:</b> 66 kDa	

## Applications

<b>Tested Applications:</b> WB, IF, ELISA	<b>Positive Controls:</b>
<b>Species Specificity:</b> Human	<b>WB :</b> HEK-293 cells, Jurkat cells <b>IF/ICC :</b> HeLa cells,

## Background Information

PLK1(Polo-like kinase 1), also named as PLK and STPK13, belongs to the protein kinase superfamily, Ser/Thr protein kinase family and CDC5/Polo subfamily. PLK1 is a Serine/threonine-protein kinase that performs several important functions throughout M phase of the cell cycle, including the regulation of centrosome maturation and spindle assembly, the removal of cohesins from chromosome arms, the inactivation of APC/C inhibitors, and the regulation of mitotic exit and cytokinesis. The localization of Polo changes during the cell cycle. In interphase, Polo shows a mostly diffuse cytoplasmic localization. Polo becomes concentrated on centrosomes from early prophase and appears on centromeres or kinetochores from late prophase, before nuclear envelope breakdown (NEB). After anaphase onset, Polo relocates to the central spindle and remains enriched at the midbody ring in late stages of cytokinesis (PMID: 29167465).

## Storage

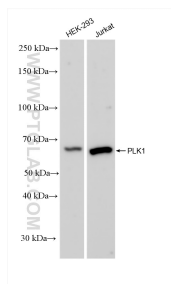
**Storage:**  
Store at -20°C. Stable for one year after shipment.  
**Storage Buffer:**  
PBS with 0.02% sodium azide and 50% glycerol pH 7.3.  
**Aliquoting is unnecessary for -20°C storage**

**\*\*\* 20ul sizes contain 0.1% BSA**

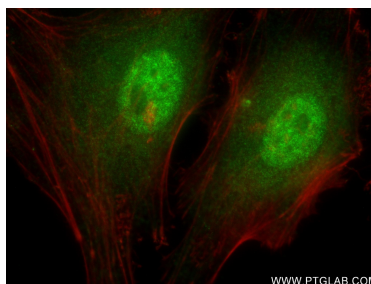
For technical support and original validation data for this product please contact:  
T: 1 (888) 4PTGLAB (1-888-478-4522) (toll free in USA), or 1(312) 455-8498 (outside USA)  
E: [proteintech@ptglab.com](mailto:proteintech@ptglab.com)  
W: [ptglab.com](http://ptglab.com)

This product is exclusively available under Proteintech Group brand and is not available to purchase from any other manufacturer.

## Selected Validation Data



Various lysates were subjected to SDS PAGE followed by western blot with 83260-5-RR (PLK1 antibody) at dilution of 1:10000 incubated at room temperature for 1.5 hours.



Immunofluorescent analysis of (4% PFA) fixed HeLa cells using PLK1 antibody (83260-5-RR, Clone: 240092B10) at dilution of 1:250 and CoraLite®488-Conjugated AffiniPure Goat Anti-Mouse IgG(H+L) (SA00013-1), CL594-Phalloidin (red).