

For Research Use Only

EFHD2 Recombinant antibody, PBS Only

Catalog Number: 83264-6-PBS



Basic Information

Catalog Number:

83264-6-PBS

Size:

100ug, Concentration: 1 mg/ml by Nanodrop;

Source:

Rabbit

Isotype:

IgG

Immunogen Catalog Number:

AG35084

GenBank Accession Number:

BC023611

GeneID (NCBI):

79180

UNIPROT ID:

Q96C19

Full Name:

EF-hand domain family, member D2

Calculated MW:

27 kDa

Observed MW:

27 kDa

Purification Method:

Protein A purification

CloneNo.:

240185A8

Applications

Tested Applications:

WB, FC (Intra), ELISA

Species Specificity:

human, mouse

Background Information

EFHD2 also named Swiprosin-1, is a Ca²⁺ binding actin protein. The expression of EFHD2 is upregulated during the activation of immune cells, epithelial and endothelial cells. The expression of EFHD2 is regulated by diverse signaling pathways that are contingent upon the specific type of cells.

Storage

Storage:

Store at -80°C.

Storage Buffer:

PBS Only

For technical support and original validation data for this product please contact:

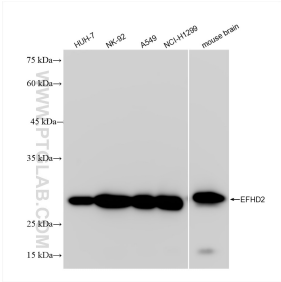
T: 1 (888) 4PTGLAB (1-888-478-4522) (toll free in USA), or 1(312) 455-8498 (outside USA)

E: proteintech@ptglab.com

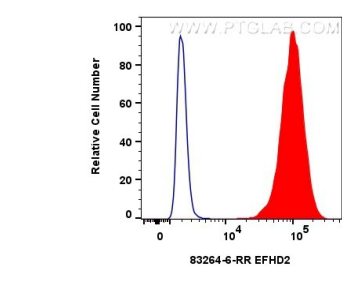
W: ptglab.com

This product is exclusively available under Proteintech Group brand and is not available to purchase from any other manufacturer.

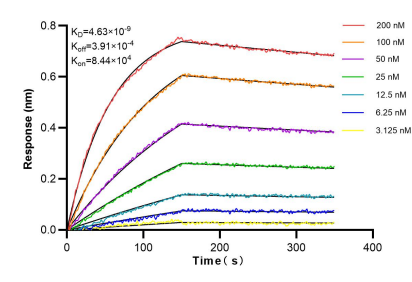
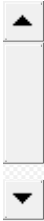
Selected Validation Data



Various lysates were subjected to SDS PAGE followed by western blot with 83264-6-RR (EFHD2 antibody) at dilution of 1:5000 incubated at room temperature for 1.5 hours. This data was developed using the same antibody clone with 83264-6-PBS in a different storage buffer formulation.



1x10⁶ A431 cells were intracellularly stained with 0.25 ug EFHD2 Recombinant antibody (83264-6-RR, Clone:240185A8) and CoraLite®488-Conjugated Goat Anti-Rabbit IgG(H+L) (SA00013-2)(red), or 0.25 ug Rabbit IgG Isotype Control Recombinant Antibody (98136-1-RR, Clone: 240953C9) (blue). Cells were fixed with 4% PFA and permeabilized with Flow Cytometry Perm Buffer (PF00011-C). This data was developed using the same antibody clone with 83264-6-PBS in a



Biolayer interferometry (BLI) kinetic assays of 83264-6-RR against Human EFHD2 were performed. The affinity constant is 4.63 nM.