

For Research Use Only

DUS2L Recombinant antibody, PBS Only



Catalog Number: 83265-8-PBS

Basic Information

Catalog Number:

83265-8-PBS

Size:

100ug, Concentration: 1 mg/ml by Nanodrop;

Source:

Rabbit

Isotype:

IgG

Immunogen Catalog Number:

AG23831

GenBank Accession Number:

BC006527

GeneID (NCBI):

54920

UNIPROT ID:

Q9NX74

Full Name:

dihydrouridine synthase 2-like, SMM1 homolog (S. cerevisiae)

Purification Method:

Protein A purification

CloneNo.:

240192C6

Applications

Tested Applications:

WB, ELISA

Species Specificity:

Human

Storage

Storage:

Store at -80°C.

Storage Buffer:

PBS Only

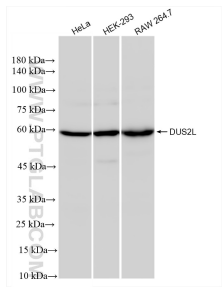
For technical support and original validation data for this product please contact:

T: 1 (888) 4PTGLAB (1-888-478-4522) (toll free in USA), or 1(312) 455-8498 (outside USA)

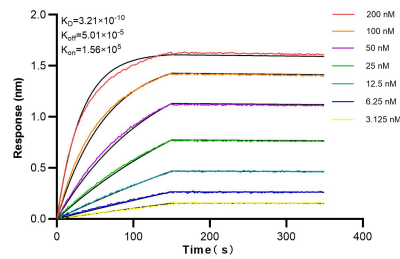
E: proteintech@ptglab.com
W: ptglab.com

This product is exclusively available under Proteintech Group brand and is not available to purchase from any other manufacturer.

Selected Validation Data



Various lysates were subjected to SDS PAGE followed by western blot with 83265-8-RR (DUS2L antibody) at dilution of 1:5000 incubated at room temperature for 1.5 hours. This data was developed using the same antibody clone with 83265-8-PBS in a different storage buffer formulation.



Biolayer interferometry (BLI) kinetic assays of 83265-8-RR against Human DUS2L were performed. The affinity constant is 0.321 nM.