

For Research Use Only

# SMOC2 Recombinant antibody, PBS Only (Detector)



Catalog Number: 83268-1-PBS

## Basic Information

<b>Catalog Number:</b> 83268-1-PBS	<b>GenBank Accession Number:</b> BC047583	<b>Purification Method:</b> Protein A purification
<b>Size:</b> 100ug , Concentration: 1mg/ml by Nanodrop;	<b>GeneID (NCBI):</b> 64094	<b>CloneNo.:</b> 240107E9
<b>Source:</b> Rabbit	<b>UNIPROT ID:</b> Q9H3U7	<b>Affinity:</b> $K_D = 2.22 \times 10^{-9}M$
<b>Isotype:</b> IgG	<b>Full Name:</b> SPARC related modular calcium binding 2	$K_{off} = 1.68 \times 10^{-4}M$ $K_{on} = 7.58 \times 10^4M$
<b>Immunogen Catalog Number:</b> AG34966	<b>Calculated MW:</b> 50 kDa	

## Applications

**Tested Applications:**  
Cytometric bead array, Sandwich ELISA, Indirect ELISA, Sample test

**Species Specificity:**  
human

## Product Information

83268-1-PBS targets SMOC2 as part of a matched antibody pair:

MP00228-1: 83268-3-PBS capture and 83268-1-PBS detection (validated in Cytometric bead array, Sandwich ELISA)

Unconjugated rabbit recombinant monoclonal antibody in PBS only (BSA and azide free) storage buffer at a concentration of 1 mg/mL, ready for conjugation. Created using Proteintech's proprietary in-house recombinant technology. Recombinant production enables unrivalled batch-to-batch consistency, easy scale-up, and future security of supply.

This conjugation ready format makes antibodies ideal for use in many applications including: ELISAs, multiplex assays requiring matched pairs, mass cytometry, and multiplex imaging applications. Antibody use should be optimized by the end user for each application and assay.

## Storage

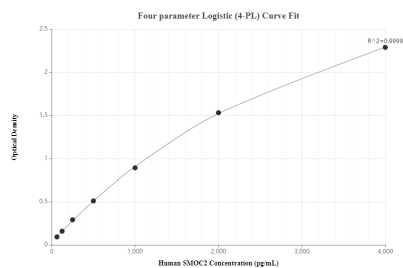
**Storage:**  
Store at -80°C.

**Storage Buffer:**  
PBS Only

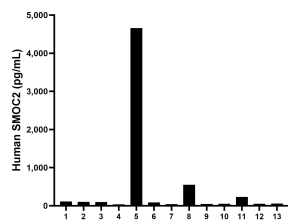
For technical support and original validation data for this product please contact:  
T: 1 (888) 4PTGLAB (1-888-478-4522) (toll free in USA), or 1(312) 455-8498 (outside USA)  
E: [proteintech@ptglab.com](mailto:proteintech@ptglab.com)  
W: [ptglab.com](http://ptglab.com)

This product is exclusively available under Proteintech Group brand and is not available to purchase from any other manufacturer.

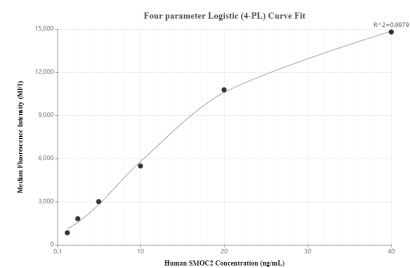
## Selected Validation Data



Sandwich ELISA standard curve of MP00228-1 Human SMOC2 Monoclonal Matched Antibody Pair - PBS only. 83268-3-PBS was coated to a plate as the capture antibody and incubated with serial dilutions of standard Ag34966. 83268-1-PBS was HRP conjugated as the detection antibody. Range: 62.5-4000 pg/mL.



Serum of thirteen individual healthy human donors were measured. The human SMOC2 concentration of detected samples was determined to be 471.5 pg/mL with a range of 39.6-4,658.9 pg/mL.



Cytometric bead array standard curve of MP00228-1, SMOC2 Recombinant Matched Antibody Pair, PBS Only. Capture antibody: 83268-3-PBS. Detection antibody: 83268-1-PBS. Standard: Ag34966. Range: 1.25-40 ng/mL.