

SMOC2 Recombinant antibody, PBS Only (Capture)

Catalog Number: 83268-3-PBS

Basic Information

Catalog Number: 83268-3-PBS	GenBank Accession Number: BC047583	Purification Method: Protein A purification
Size: 100ug , Concentration: 1mg/ml by Nanodrop;	GeneID (NCBI): 64094	CloneNo.: 240107G1
Source: Rabbit	UNIPROT ID: Q9H3U7	Affinity: $K_D = 1.99 \times 10^{-9}M$
Isotype: IgG	Full Name: SPARC related modular calcium binding 2	$K_{off} = 1.97 \times 10^{-4}M$ $K_{on} = 9.90 \times 10^4M$
Immunogen Catalog Number: AG34966	Calculated MW: 50 kDa	

Applications

Tested Applications:
Cytometric bead array, Sandwich ELISA, Indirect ELISA, Sample test

Species Specificity:
human

Product Information

83268-3-PBS targets SMOC2 as part of a matched antibody pair:

MP00228-1: 83268-3-PBS capture and 83268-1-PBS detection (validated in Cytometric bead array, Sandwich ELISA)

MP00228-2: 83268-3-PBS capture and 83268-2-PBS detection (validated in Cytometric bead array)

Unconjugated rabbit recombinant monoclonal antibody in PBS only (BSA and azide free) storage buffer at a concentration of 1 mg/mL, ready for conjugation. Created using Proteintech's proprietary in-house recombinant technology. Recombinant production enables unrivalled batch-to-batch consistency, easy scale-up, and future security of supply.

This conjugation ready format makes antibodies ideal for use in many applications including: ELISAs, multiplex assays requiring matched pairs, mass cytometry, and multiplex imaging applications. Antibody use should be optimized by the end user for each application and assay.

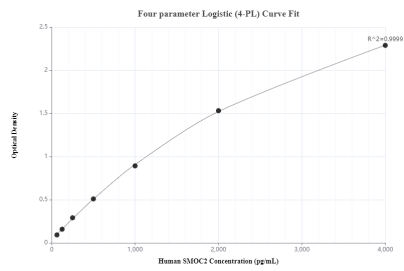
Storage

Storage:
Store at -80°C.
Storage Buffer:
PBS Only

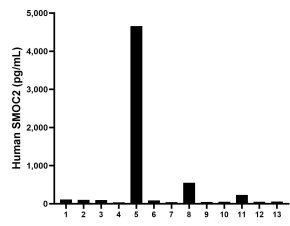
For technical support and original validation data for this product please contact:
T: 1 (888) 4PTGLAB (1-888-478-4522) (toll free in USA), or 1(312) 455-8498 (outside USA)
E: proteintech@ptglab.com
W: ptglab.com

This product is exclusively available under Proteintech Group brand and is not available to purchase from any other manufacturer.

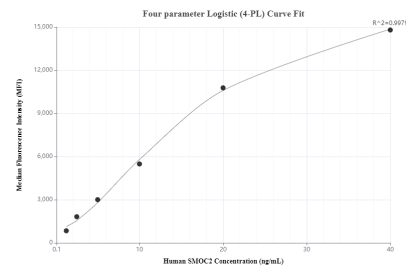
Selected Validation Data



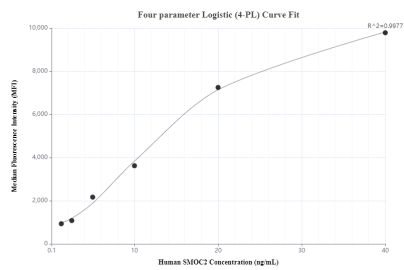
Sandwich ELISA standard curve of MP00228-1 Human SMOC2 Monoclonal Matched Antibody Pair - PBS only. 83268-3-PBS was coated to a plate as the capture antibody and incubated with serial dilutions of standard Ag34966. 83268-1-PBS was HRP conjugated as the detection antibody. Range: 62.5-4000 pg/mL



Serum of thirteen individual healthy human donors were measured. The human SMOC2 concentration of detected samples was determined to be 471.5 pg/mL with a range of 39.6-4,658.9 pg/mL.



Cytometric bead array standard curve of MP00228-1, SMOC2 Recombinant Matched Antibody Pair, PBS Only. Capture antibody: 83268-3-PBS. Detection antibody: 83268-1-PBS. Standard: Ag34966. Range: 1.25-40 ng/mL



Cytometric bead array standard curve of MP00228-2, SMOC2 Recombinant Matched Antibody Pair, PBS Only. Capture antibody: 83268-3-PBS. Detection antibody: 83268-2-PBS. Standard: Ag34966. Range: 1.25-40 ng/mL