

For Research Use Only

KERA Recombinant antibody

Catalog Number: 83272-1-RR



Basic Information

Catalog Number:	83272-1-RR	GenBank Accession Number:	BC032667	Purification Method:	Protein A purification
Size:	100ul , Concentration: 1000 ug/ml by Nanodrop;	GeneID (NCBI):	11081	CloneNo.:	230399B11
Source:	Rabbit	UNIPROT ID:	O60938		
Isotype:	IgG	Full Name:	keratocan		
Immunogen Catalog Number:	AG34171	Calculated MW:	352 aa, 41 kDa		

Applications

Tested Applications:
FC (Intra), ELISA
Species Specificity:
human

Background Information

Keratocan and Lumican are the predominant class II SLRPs (Small leucine-rich proteoglycans) in the corneal stroma. While not totally corneal-specific together these SLRPs are excellent biomarkers for the tissue. Mutant mice deficient for keratocan expression have transparent but thin corneal stromas with a mild increase in collagen fibril diameter with no further abnormalities. In humans, mutations in the keratocan gene are associated with a flattened cornea in a rare condition known as cornea plana. The relative specificity of keratocan to corneal keratocytes has been useful for tissue-specific targeting for genetic manipulation of the corneal stroma. (PMID: 32663498)

Storage

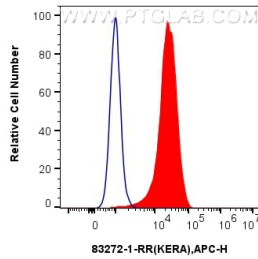
Storage:
Store at -20°C. Stable for one year after shipment.
Storage Buffer:
PBS with 0.02% sodium azide and 50% glycerol pH 7.3.
Aliquoting is unnecessary for -20°C storage

*** 20ul sizes contain 0.1% BSA

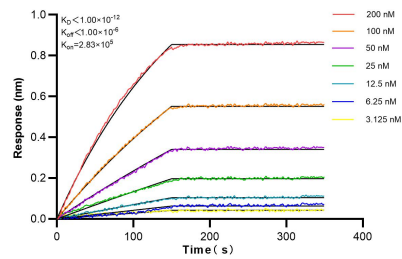
For technical support and original validation data for this product please contact:
T: 1 (888) 4PTGLAB (1-888-478-4522) (toll free in USA), or 1(312) 455-8498 (outside USA)
E: proteintech@ptglab.com
W: ptglab.com

This product is exclusively available under Proteintech Group brand and is not available to purchase from any other manufacturer.

Selected Validation Data



1x10⁶ U251 were intracellularly stained with 0.2 ug KERA Recombinant Antibody (83272-1-RR, Clone:230399B11) and APC-Conjugated AffiniPure Goat Anti-Rabbit IgG(H+L)(red), or 0.2 ug Rabbit IgG control Rabbit PolyAb (30000-O-AP) (blue). Cells were fixed with 4% PFA and permeabilized with Flow Cytometry Perm Buffer (PF00011-C).



Biolayer interferometry (BLI) kinetic assays of 83272-1-RR against Human KERA were performed. The affinity constant is below 1 pM.