

For Research Use Only

Cytochrome c Recombinant antibody, PBS Only (Detector)

Catalog Number: 83276-6-PBS



Basic Information

Catalog Number: 83276-6-PBS	GenBank Accession Number: BC009578	Purification Method: Protein A purification
Size: 100ug , Concentration: 1 mg/ml by Nanodrop;	GeneID (NCBI): 54205	CloneNo.: 230503C12
Source: Rabbit	UNIPROT ID: P99999	
Isotype: IgG	Full Name: cytochrome c, somatic	
Immunogen Catalog Number: AG1455	Calculated MW: 12 kDa	

Applications

Tested Applications:
Sandwich ELISA, Indirect ELISA, Sample test

Species Specificity:
human

Product Information

83276-6-PBS targets Cytochrome c as part of a matched antibody pair:

MP01934-3: 83276-5-PBS capture and 83276-6-PBS detection (validated in Sandwich ELISA)

Unconjugated rabbit recombinant monoclonal antibody in PBS only (BSA and azide free) storage buffer at a concentration of 1 mg/mL, ready for conjugation. Created using Proteintech's proprietary in-house recombinant technology. Recombinant production enables unrivalled batch-to-batch consistency, easy scale-up, and future security of supply.

This conjugation ready format makes antibodies ideal for use in many applications including: ELISAs, multiplex assays requiring matched pairs, mass cytometry, and multiplex imaging applications. Antibody use should be optimized by the end user for each application and assay.

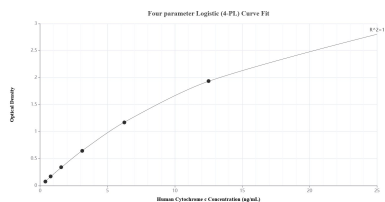
Storage

Storage:
Store at -80°C.
Storage Buffer:
PBS only, pH7.3

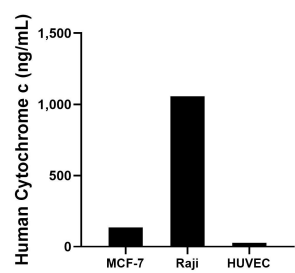
For technical support and original validation data for this product please contact:
T: 1 (888) 4PTGLAB (1-888-478-4522) (toll free in USA), or 1(312) 455-8498 (outside USA)
E: proteintech@ptglab.com
W: ptglab.com

This product is exclusively available under Proteintech Group brand and is not available to purchase from any other manufacturer.

Selected Validation Data



Sandwich ELISA standard curve of MP01934-3, Human Cytochrome c Recombinant Matched Antibody Pair - PBS only. 83276-5-PBS was coated to a plate as the capture antibody and incubated with serial dilutions of standard Ag1455. 83276-6-PBS was HRP conjugated as the detection antibody. Range: 0.391-25 ng/mL



The mean Cytochrome c concentration was determined to be 135.89 ng/mL in MCF-7 cell extract based on a 1.30 mg/mL extract load, 1,056.51 ng/mL in Raji cell extract based on a 3.00 mg/mL extract load and 26.74 ng/mL in HUVEC cell extract based on a 1.40 mg/mL extract load.