

For Research Use Only

# EPHB2 Recombinant antibody, PBS Only

Catalog Number: 83277-1-PBS



## Basic Information

Catalog Number:

83277-1-PBS

Size:

100ug, Concentration: 1mg/ml by  
Nanodrop;

Source:

Rabbit

Isotype:

IgG

Immunogen Catalog Number:

AG28786

GenBank Accession Number:

BC018763

GeneID (NCBI):

2048

UNIPROT ID:

P29323

Full Name:

EPH receptor B2

Calculated MW:

987 aa, 108 kDa

Observed MW:

120 kDa

Purification Method:

Protein A purification

CloneNo.:

230111A5

## Applications

Tested Applications:

WB, Indirect ELISA

Species Specificity:

human

## Storage

Storage:

Store at -80°C.

Storage Buffer:

PBS Only

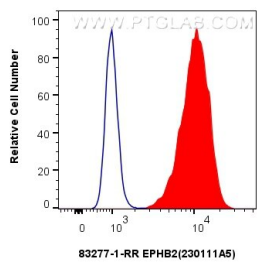
For technical support and original validation data for this product please contact:

T: 1 (888) 4PTGLAB (1-888-478-4522) (toll free  
in USA), or 1(312) 455-8498 (outside USA)

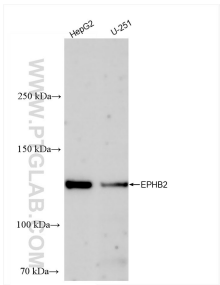
E: [proteintech@ptglab.com](mailto:proteintech@ptglab.com)  
W: [ptglab.com](http://ptglab.com)

This product is exclusively available under Proteintech Group brand and is not available to purchase from any other manufacturer.

Selected Validation Data



1x10<sup>6</sup> HepG2 cells were intracellularly stained with 0.25 ug EPHB2 Recombinant antibody (83277-1-RR, Clone:230111A5) and CoraLite®488-Conjugated Goat Anti-Rabbit IgG(H+L) (SA00013-2)(red), or 0.25 ug Rabbit IgG Isotype Control Recombinant Antibody (98136-1-RR, Clone: 240953C9) (blue). Cells were fixed with 4% PFA and permeabilized with Flow Cytometry Perm Buffer (PF00011-C). This data was developed using the same antibody clone with 83277-1-PBS in a



Various lysates were subjected to SDS PAGE followed by western blot with 83277-1-RR (EPHB2 antibody) at dilution of 1:500 incubated at room temperature for 1.5 hours. This data was developed using the same antibody clone with 83277-1-PBS in a different storage buffer formulation.