

For Research Use Only

TFPI2 Recombinant antibody

Catalog Number: 83279-1-RR



Basic Information

Catalog Number: 83279-1-RR	GenBank Accession Number: NM_001271003.1	Purification Method: Protein A purification
Size: 100ul , Concentration: 1000 ug/ml by Nanodrop;	GeneID (NCBI): 7980	CloneNo.: 230135E3
Source: Rabbit	UNIPROT ID: P48307	Recommended Dilutions: WB 1:5000-1:50000
Isotype: IgG	Full Name: tissue factor pathway inhibitor 2	
Immunogen Catalog Number: AG33467	Calculated MW: 27 kDa	
	Observed MW: 26-36 kDa	

Applications

Tested Applications: WB, ELISA	Positive Controls: WB : human placenta tissue,
Species Specificity: Human	

Background Information

TFPI2 (tissue factor pathway inhibitor 2), also known as PP5. It is expected to be located in extracellular space, and the protein is enriched in the placenta. This gene encodes a member of the Kunitz-type serine proteinase inhibitor family. The protein can inhibit a variety of serine proteases including factor VIIa/tissue factor, factor Xa, plasmin, trypsin, chymotrypsin and plasma kallikrein. This gene has been identified as a tumor suppressor gene in several types of cancer. The molecular weight of TFPI2 is 27 kDa, and it can recognize the band of 36 kDa (PMID: 21421890).

Storage

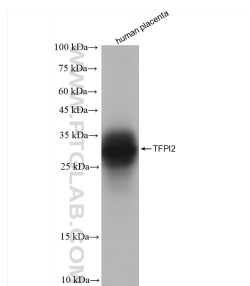
Storage:
Store at -20°C. Stable for one year after shipment.
Storage Buffer:
PBS with 0.02% sodium azide and 50% glycerol pH 7.3.
Aliquoting is unnecessary for -20°C storage

*** 20ul sizes contain 0.1% BSA

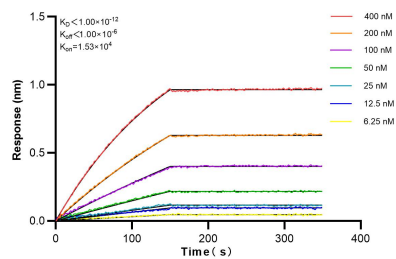
For technical support and original validation data for this product please contact:
T: 1 (888) 4PTGLAB (1-888-478-4522) (toll free in USA), or 1(312) 455-8498 (outside USA)
E: proteintech@ptglab.com
W: ptglab.com

This product is exclusively available under Proteintech Group brand and is not available to purchase from any other manufacturer.

Selected Validation Data



human placenta tissue were subjected to SDS PAGE followed by western blot with 83279-1-RR (TFPI2 antibody) at dilution of 1:10000 incubated at room temperature for 1.5 hours.



Biolayer interferometry (BLI) kinetic assays of 83279-1-RR against Human TFPI2 were performed. The affinity constant is below 1 pM.