

For Research Use Only

# NUP85 Recombinant antibody, PBS Only (Capture)

Catalog Number: 83288-2-PBS



## Basic Information

<b>Catalog Number:</b> 83288-2-PBS	<b>GenBank Accession Number:</b> BC000697	<b>Purification Method:</b> Protein A purification
<b>Size:</b> 100ug , Concentration: 1mg/ml by Nanodrop;	<b>GeneID (NCBI):</b> 79902	<b>CloneNo.:</b> 240116E10
<b>Source:</b> Rabbit	<b>UNIPROT ID:</b> Q9BW27	
<b>Isotype:</b> IgG	<b>Full Name:</b> nucleoporin 85kDa	
<b>Immunogen Catalog Number:</b> AG7086	<b>Calculated MW:</b> 75 kDa	

## Applications

**Tested Applications:**  
WB, FC (Intra), Cytometric bead array, Sandwich ELISA, Indirect ELISA, Sample test

**Species Specificity:**  
human

## Product Information

83288-2-PBS targets NUP85 as part of a matched antibody pair:

MP00330-1: 83288-2-PBS capture and 83288-1-PBS detection (validated in Cytometric bead array, Sandwich ELISA)

MP00330-2: 83288-2-PBS capture and 83288-3-PBS detection (validated in Cytometric bead array)

Unconjugated rabbit recombinant monoclonal antibody in PBS only (BSA and azide free) storage buffer at a concentration of 1 mg/mL, ready for conjugation. Created using Proteintech's proprietary in-house recombinant technology. Recombinant production enables unrivalled batch-to-batch consistency, easy scale-up, and future security of supply.

This conjugation ready format makes antibodies ideal for use in many applications including: ELISAs, multiplex assays requiring matched pairs, mass cytometry, and multiplex imaging applications. Antibody use should be optimized by the end user for each application and assay.

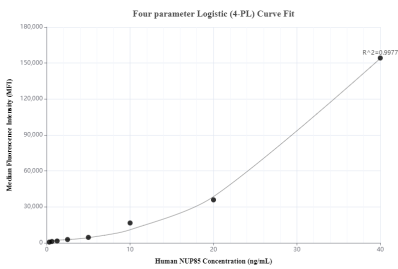
## Storage

**Storage:**  
Store at -80°C.  
**Storage Buffer:**  
PBS only, pH7.3

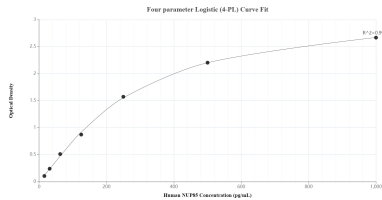
For technical support and original validation data for this product please contact:  
T: 1 (888) 4PTGLAB (1-888-478-4522) (toll free in USA), or 1(312) 455-8498 (outside USA)  
E: [proteintech@ptglab.com](mailto:proteintech@ptglab.com)  
W: [ptglab.com](http://ptglab.com)

This product is exclusively available under Proteintech Group brand and is not available to purchase from any other manufacturer.

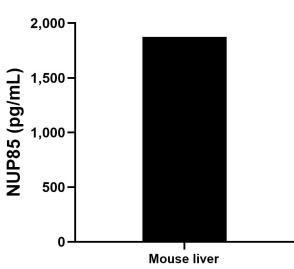
Selected Validation Data



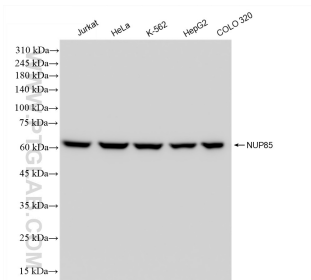
Cytometric bead array standard curve of MP00330-1, NUP85 Recombinant Matched Antibody Pair, PBS Only. Capture antibody: 83288-2-PBS. Detection antibody: 83288-1-PBS. Standard: Ag7086. Range: 0.313-40 ng/mL



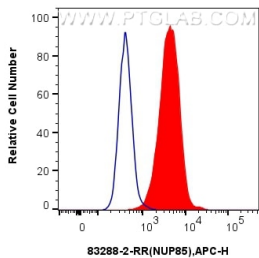
Sandwich ELISA standard curve of MP00330-1, Human NUP85 Recombinant Matched Antibody Pair - PBS only. 83288-2-PBS was coated to a plate as the capture antibody and incubated with serial dilutions of standard Ag7086. 83288-1-PBS was HRP conjugated as the detection antibody. Range: 15.6-1000 pg/mL



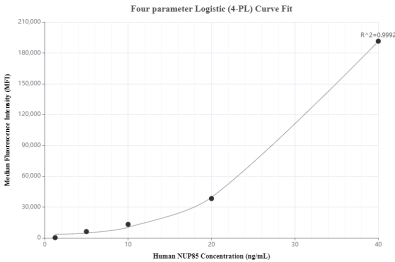
The mean NUP85 concentration was determined to be 1,874.5 pg/mL in mouse liver tissue extract based on a 3.0 mg/mL extract load.



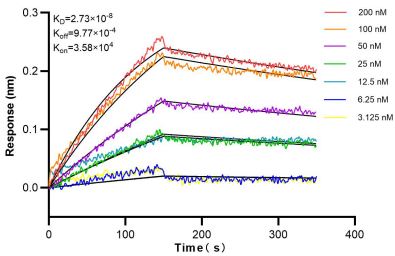
Various lysates were subjected to SDS PAGE followed by western blot with 83288-2-RR (NUP85 antibody) at dilution of 1:10000 incubated at room temperature for 1.5 hours. This data was developed using the same antibody clone with 83288-2-PBS in a different storage buffer formulation.



1x10<sup>6</sup> MCF-7 cells were intracellularly stained with 0.25 ug NUP85 Recombinant antibody (83288-2-RR, Clone:240116E10) and APC-Conjugated AffiniPure Goat Anti-Rabbit IgG(H+L)(red), or 0.25 ug Isotype Control (blue). Cells were fixed and permeabilized with Transcription Factor Staining Buffer Kit (PF00011). This data was developed using the same antibody clone with 83288-2-PBS in a different storage buffer formulation.



Cytometric bead array standard curve of MP00330-2, NUP85 Recombinant Matched Antibody Pair, PBS Only. Capture antibody: 83288-2-PBS. Detection antibody: 83288-3-PBS. Standard: Ag7086. Range: 1.25-40 ng/mL



Biolayer interferometry (BLI) kinetic assays of 83288-2-RR against Human NUP85 were performed. The affinity constant is 27.3 nM.