

For Research Use Only

Mouse Albumin Recombinant antibody, PBS Only (Capture/Detector)

Catalog Number:83289-3-PBS



Basic Information

Catalog Number: 83289-3-PBS	GenBank Accession Number: NM_009654.4	Purification Method: Protein A purification
Size: 100ug , Concentration: 1mg/ml by Nanodrop;	GeneID (NCBI): 11657	CloneNo.: 240245F8
Source: Rabbit	UNIPROT ID: P07724	
Isotype: IgG	Full Name: albumin	
Immunogen Catalog Number: EG0886	Calculated MW: 69 kDa	

Applications

Tested Applications:
Cytometric bead array, Sandwich ELISA, Indirect ELISA,
Sample test

Species Specificity:
mouse

Product Information

83289-3-PBS targets Albumin as part of a matched antibody pair:

MP00329-1: 83289-1-PBS capture and 83289-3-PBS detection (validated in Cytometric bead array)

MP00329-3: 83289-3-PBS capture and 83289-2-PBS detection (validated in Cytometric bead array)

MP00329-4: 83289-5-PBS capture and 83289-3-PBS detection (validated in Sandwich ELISA)

Unconjugated rabbit recombinant monoclonal antibody in PBS only (BSA and azide free) storage buffer at a concentration of 1 mg/mL, ready for conjugation. Created using Proteintech's proprietary in-house recombinant technology. Recombinant production enables unrivalled batch-to-batch consistency, easy scale-up, and future security of supply.

This conjugation ready format makes antibodies ideal for use in many applications including: ELISAs, multiplex assays requiring matched pairs, mass cytometry, and multiplex imaging applications. Antibody use should be optimized by the end user for each application and assay.

Storage

Storage:
Store at -80°C.
Storage Buffer:
PBS only, pH7.3

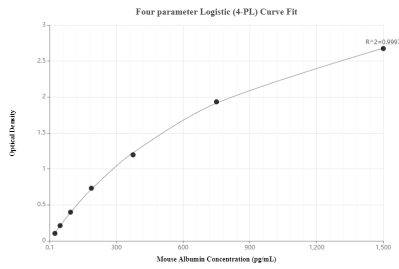
For technical support and original validation data for this product please contact:

T: 1 (888) 4PTGLAB (1-888-478-4522) (toll free
in USA), or 1(312) 455-8498 (outside USA)

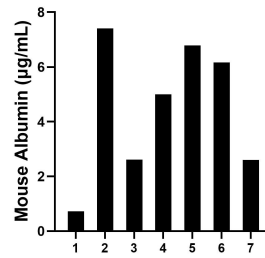
E: proteintech@ptglab.com
W: ptglab.com

This product is exclusively available under Proteintech Group brand and is not available to purchase from any other manufacturer.

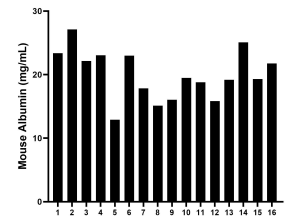
Selected Validation Data



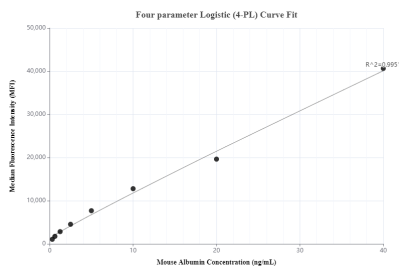
Sandwich ELISA standard curve of MP00329-4, Mouse Albumin Recombinant Matched Antibody Pair - PBS only. 83289-5-PBS was coated to a plate as the capture antibody and incubated with serial dilutions of standard Eg0886. 83289-3-PBS was HRP conjugated as the detection antibody. Range: 23.4-1500 µg/mL



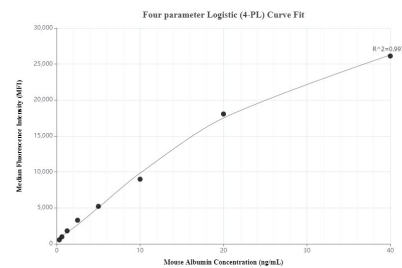
Urine of seven mice was measured. The Albumin concentration of detected samples was determined to be 4.5 µg/mL with a range of 0.7-7.4 µg/mL.



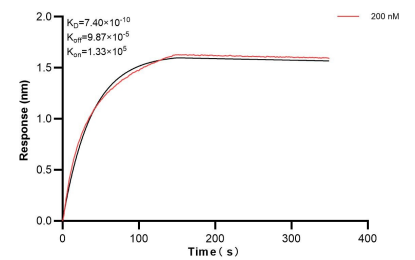
Serum of sixteen mice was measured. The Albumin concentration of detected samples was determined to be 20.0 mg/mL with a range of 12.9-27.1 mg/mL.



Cytometric bead array standard curve of MP00329-1, MOUSE Albumin Recombinant Matched Antibody Pair, PBS Only. Capture antibody: 83289-1-PBS. Detection antibody: 83289-3-PBS. Standard: Eg0886. Range: 0.313-40 ng/mL



Cytometric bead array standard curve of MP00329-3, MOUSE Albumin Recombinant Matched Antibody Pair, PBS Only. Capture antibody: 83289-3-PBS. Detection antibody: 83289-2-PBS. Standard: Eg0886. Range: 0.313-40 ng/mL



Bi-layer interferometry (BLI) kinetic assay of 83289-3-PBS against Mouse Albumin was performed. The affinity constant is 0.74 nM.