

For Research Use Only

IGFBP7 Recombinant antibody, PBS Only (Detector)

Catalog Number: 83292-7-PBS



Basic Information

Catalog Number: 83292-7-PBS	GenBank Accession Number: NM_001553.2	Purification Method: Protein A purification
Size: 100ug , Concentration: 1 mg/ml by Nanodrop;	GeneID (NCBI): 3490	CloneNo.: 240228B5
Source: Rabbit	UNIPROT ID: Q16270-1	
Isotype: IgG	Full Name: insulin-like growth factor binding protein 7	
	Calculated MW: 29 kDa	

Applications

Tested Applications:
Sandwich ELISA, Indirect ELISA, Sample test

Species Specificity:
human

Product Information

83292-7-PBS targets IGFBP7 as part of a matched antibody pair:

MP00319-4: 83292-6-PBS capture and 83292-7-PBS detection (validated in Sandwich ELISA)

Unconjugated rabbit recombinant monoclonal antibody in PBS only (BSA and azide free) storage buffer at a concentration of 1 mg/mL, ready for conjugation. Created using Proteintech's proprietary in-house recombinant technology. Recombinant production enables unrivalled batch-to-batch consistency, easy scale-up, and future security of supply.

This conjugation ready format makes antibodies ideal for use in many applications including: ELISAs, multiplex assays requiring matched pairs, mass cytometry, and multiplex imaging applications. Antibody use should be optimized by the end user for each application and assay.

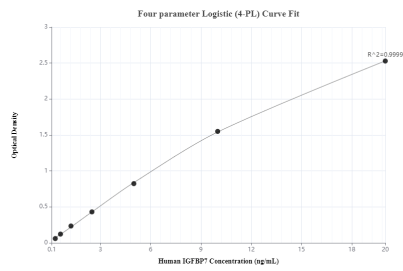
Storage

Storage:
Store at -80°C.
Storage Buffer:
PBS Only

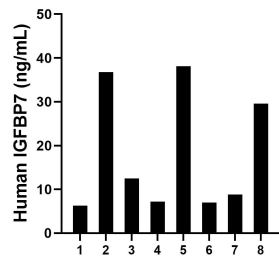
For technical support and original validation data for this product please contact:
T: 1 (888) 4PTGLAB (1-888-478-4522) (toll free in USA), or 1(312) 455-8498 (outside USA)
E: proteintech@ptglab.com
W: ptglab.com

This product is exclusively available under Proteintech Group brand and is not available to purchase from any other manufacturer.

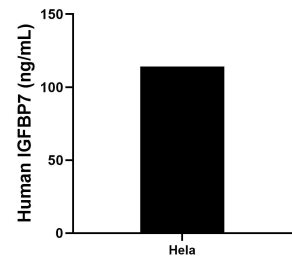
Selected Validation Data



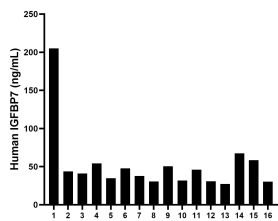
Sandwich ELISA standard curve of MP00319-4, Human IGFBP7 Monoclonal Matched Antibody Pair - PBS only. 83292-6-PBS was coated to a plate as the capture antibody and incubated with serial dilutions of standard Eg0815. 83292-7-PBS was HRP conjugated as the detection antibody. Range: 0.313-20 ng/mL



Urine of eight individual healthy human donors was measured. The human IGFBP7 concentration of detected samples was determined to be 18.3 ng/mL with a range of 6.3 - 38.1 ng/mL



HeLa were cultured in DMEM supplemented with 10% fetal bovine serum, 2.5 mM L-glutamine, 100 U/mL penicillin, and 100 µg/mL streptomycin sulfate. An aliquot of the cell culture supernatants was removed, assayed for human IGFBP7, and measured 114.2 ng/mL



Serum of sixteen individual healthy human donors were measured. The human IGFBP7 concentration of detected samples was determined to be 52.3 ng/mL with a range of 27.4 - 205.1 ng/mL