

For Research Use Only

GINS1 Recombinant antibody

Catalog Number: 83293-1-RR



Basic Information

Catalog Number: 83293-1-RR	GenBank Accession Number: BC012542	Purification Method: Protein A purification
Size: 100ul , Concentration: 1000 ug/ml by Nanodrop;	GeneID (NCBI): 9837	CloneNo.: 240234A2
Source: Rabbit	UNIPROT ID: Q14691	Recommended Dilutions: WB 1:5000-1:50000
Isotype: IgG	Full Name: GINS complex subunit 1 (Psf1 homolog)	
Immunogen Catalog Number: AG8895	Calculated MW: 196 aa, 23 kDa	
	Observed MW: 20 kDa	

Applications

Tested Applications: WB, ELISA	Positive Controls: WB : Jurkat cells, HeLa cells, HepG2 cells
Species Specificity: human	

Background Information

GINS1, also known as Partner of SLD Five 1 (PSF1) is a member of the GINS (Go-Ichi-Nii-San) complex, which plays a vital role in the initiation and elongation of DNA replication (PMID: 34414190). GINS1 was initially found to be predominantly expressed in highly proliferating cells instead of mature cells. Later on, it was found that GINS was involved in the tumorigenesis of various cancers, including breast cancer, colorectal cancer, and hepatocellular carcinoma (PMID: 36065190).

Storage

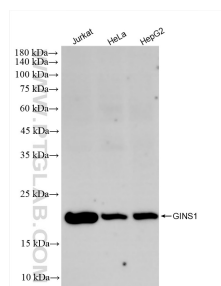
Storage:
Store at -20°C. Stable for one year after shipment.
Storage Buffer:
PBS with 0.02% sodium azide and 50% glycerol pH 7.3.
Aliquoting is unnecessary for -20°C storage

*** 20ul sizes contain 0.1% BSA

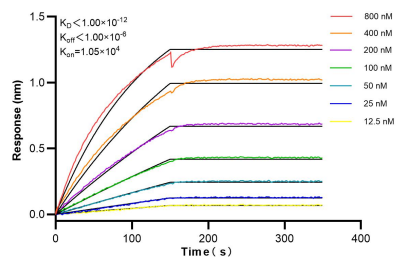
For technical support and original validation data for this product please contact:
T: 1 (888) 4PTGLAB (1-888-478-4522) (toll free in USA), or 1(312) 455-8498 (outside USA)
E: proteintech@ptglab.com
W: ptglab.com

This product is exclusively available under Proteintech Group brand and is not available to purchase from any other manufacturer.

Selected Validation Data



Various lysates were subjected to SDS PAGE followed by western blot with 83293-1-RR (GINS1 antibody) at dilution of 1:10000 incubated at room temperature for 1.5 hours.



Biolayer interferometry (BLI) kinetic assays of 83293-1-RR against Human GINS1 were performed. The affinity constant is below 1 pM.