

For Research Use Only

RELB Recombinant antibody, PBS Only (Detector)

Catalog Number: 83305-5-PBS



Basic Information

Catalog Number: 83305-5-PBS	GenBank Accession Number: BC028013	Purification Method: Protein A purification
Size: 100ug , Concentration: 1 mg/ml by Nanodrop;	GeneID (NCBI): 5971	CloneNo.: 242336G3
Source: Rabbit	UNIPROT ID: Q01201	
Isotype: IgG	Full Name: v-rel reticuloendotheliosis viral oncogene homolog B	
Immunogen Catalog Number: AG13824	Calculated MW: 62 kDa	

Applications

Tested Applications:
Cytometric bead array, Sandwich ELISA, Indirect ELISA, Sample test

Species Specificity:
human

Product Information

83305-5-PBS targets RELB as part of a matched antibody pair:

MP01583-1: 83305-4-PBS capture and 83305-5-PBS detection (validated in Cytometric bead array, Sandwich ELISA)

MP01583-2: 83305-3-PBS capture and 83305-5-PBS detection (validated in Cytometric bead array)

Unconjugated rabbit recombinant monoclonal antibody in PBS only (BSA and azide free) storage buffer at a concentration of 1 mg/mL, ready for conjugation. Created using Proteintech's proprietary in-house recombinant technology. Recombinant production enables unrivalled batch-to-batch consistency, easy scale-up, and future security of supply.

This conjugation ready format makes antibodies ideal for use in many applications including: ELISAs, multiplex assays requiring matched pairs, mass cytometry, and multiplex imaging applications. Antibody use should be optimized by the end user for each application and assay.

Storage

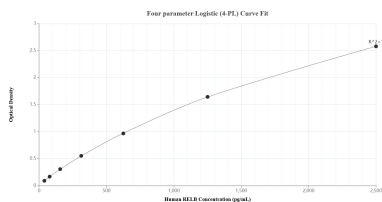
Storage:
Store at -80°C.

Storage Buffer:
PBS Only

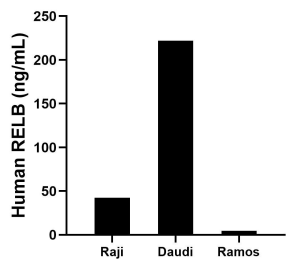
For technical support and original validation data for this product please contact:
T: 1 (888) 4PTGLAB (1-888-478-4522) (toll free in USA), or 1(312) 455-8498 (outside USA)
E: proteintech@ptglab.com
W: ptglab.com

This product is exclusively available under Proteintech Group brand and is not available to purchase from any other manufacturer.

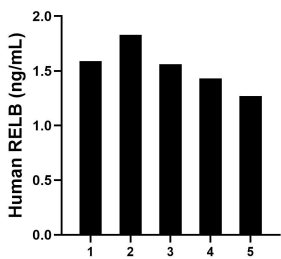
Selected Validation Data



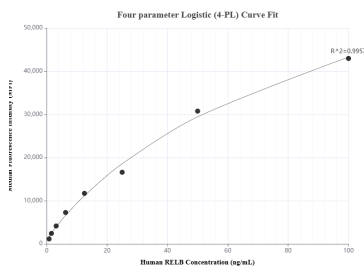
Sandwich ELISA standard curve of MP01583-1, Human RELB Recombinant Matched Antibody Pair - PBS only. 83305-4-PBS was coated to a plate as the capture antibody and incubated with serial dilutions of standard Ag13824. 83305-5-PBS was HRP conjugated as the detection antibody. Range: 39.1-2500 pg/mL.



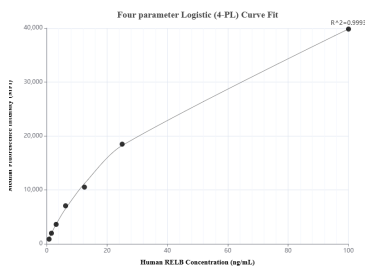
The mean RELB concentration was determined to be 42.5 ng/mL in Raji cell extract based on a 1.4 mg/mL extract load, 221.9 ng/mL in Daudi cell extract based on a 3.6 mg/mL extract load and 4.5 ng/mL in Ramos cell extract based on a 1.4 mg/mL extract load.



Serum of five individual healthy human donors was measured. The RELB concentration of detected samples was determined to be 1.5 ng/mL with a range of 1.3-1.8 ng/mL.



Cytometric bead array standard curve of MP01583-1, RELB Recombinant Matched Antibody Pair, PBS Only. Capture antibody: 83305-4-PBS. Detection antibody: 83305-5-PBS. Standard: Ag13824. Range: 0.781-100 ng/mL.



Cytometric bead array standard curve of MP01583-2, RELB Recombinant Matched Antibody Pair, PBS Only. Capture antibody: 83305-3-PBS. Detection antibody: 83305-5-PBS. Standard: Ag13824. Range: 0.781-100 ng/mL.