

For Research Use Only

RELB Recombinant antibody

Catalog Number: 83305-6-RR



Basic Information

Catalog Number:

83305-6-RR

Size:

100ul, Concentration: 1000 ug/ml by

Nanodrop;

Source:

Rabbit

Isotype:

IgG

Immunogen Catalog Number:

AG13824

GenBank Accession Number:

BC028013

GeneID (NCBI):

5971

UNIPROT ID:

Q01201

Full Name:

v-rel reticuloendotheliosis viral
oncogene homolog B

Calculated MW:

62 kDa

Observed MW:

62-65 kDa

Purification Method:

Protein A purification

CloneNo.:

242336G4

Recommended Dilutions:

WB 1:5000-1:50000

Applications

Tested Applications:

WB, FC (Intra), ELISA

Species Specificity:

human

Positive Controls:

WB : Raji cells, Daudi cells, MDA-MB-231 cells

Background Information

RELB, also named as Transcription factor RelB, is a 579 amino acid protein, which contains one RHD domain. RELB localizes in the nucleus and cytoplasm. RELB is a pleiotropic transcription factor which is present in almost all cell types and is involved in many biological processes such as inflammation, immunity, differentiation, cell growth, tumorigenesis and apoptosis.

Storage

Storage:

Store at -20°C. Stable for one year after shipment.

Storage Buffer:

PBS with 0.02% sodium azide and 50% glycerol pH 7.3.

Aliquoting is unnecessary for -20°C storage

*** 20ul sizes contain 0.1% BSA

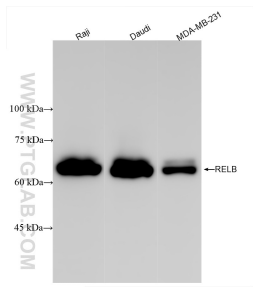
For technical support and original validation data for this product please contact:

T: 1 (888) 4PTGLAB (1-888-478-4522) (toll free
in USA), or 1(312) 455-8498 (outside USA)

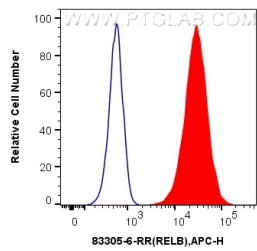
E: proteintech@ptglab.com
W: ptglab.com

This product is exclusively available under Proteintech Group brand and is not available to purchase from any other manufacturer.

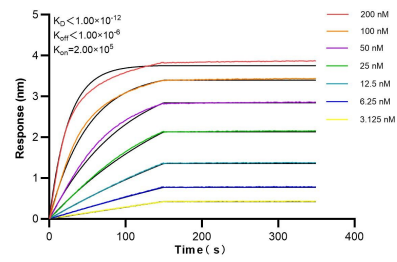
Selected Validation Data



Various lysates were subjected to SDS PAGE followed by western blot with 83305-6-RR (RELB antibody) at dilution of 1:10000 incubated at room temperature for 1.5 hours.



1x10⁶ Raji cells were intracellularly stained with 0.25 ug RELB Recombinant antibody (83305-6-RR, Clone:242336G4) and APC-Conjugated Goat Anti-Rabbit IgG(H+L)(red), or 0.25 ug Rabbit IgG Isotype Control Recombinant Antibody (98136-1-RR, Clone:240953C9) (blue). Cells were fixed with 4% PFA and permeabilized with Flow Cytometry Perm Buffer (PF00011-C).



Biolayer interferometry (BLI) kinetic assays of 83305-6-RR against Human RELB were performed. The affinity constant is below 1 pM.