

For Research Use Only

MUC1/CA15-3 C-terminal Recombinant antibody, PBS Only (Capture)

Catalog Number: 83311-3-PBS



Basic Information

| | | |
|---|---|---|
| Catalog Number: 83311-3-PBS | GenBank Accession Number: BC120975 | Purification Method: Protein A purification |
| Size: 100ug , Concentration: 1 mg/ml by Nanodrop; | GeneID (NCBI): 4582 | CloneNo.: 240190D12 |
| Source: Rabbit | UNIPROT ID: P15941 | |
| Isotype: IgG | Full Name: mucin 1, cell surface associated | |
| Immunogen Catalog Number: AG20366 | Calculated MW: 1264 aa, 123 kDa | |

Applications

Tested Applications:
Cytometric bead array, Sandwich ELISA, Indirect ELISA, Sample test

Species Specificity:
human

Product Information

83311-3-PBS targets MUC1/CA15-3 C-terminal as part of a matched antibody pair:

MP00335-1: 83311-3-PBS capture and 83311-1-PBS detection (validated in Cytometric bead array, Sandwich ELISA)

Unconjugated rabbit recombinant monoclonal antibody in PBS only (BSA and azide free) storage buffer at a concentration of 1 mg/mL, ready for conjugation. Created using Proteintech's proprietary in-house recombinant technology. Recombinant production enables unrivalled batch-to-batch consistency, easy scale-up, and future security of supply.

This conjugation ready format makes antibodies ideal for use in many applications including: ELISAs, multiplex assays requiring matched pairs, mass cytometry, and multiplex imaging applications. Antibody use should be optimized by the end user for each application and assay.

Storage

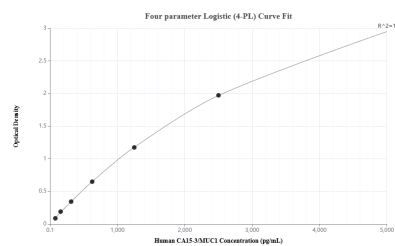
Storage:
Store at -80°C.

Storage Buffer:
PBS Only

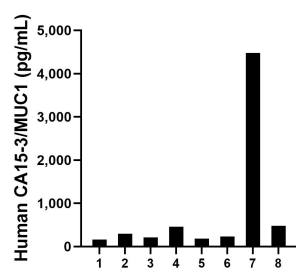
For technical support and original validation data for this product please contact:
T: 1 (888) 4PTGLAB (1-888-478-4522) (toll free in USA), or 1(312) 455-8498 (outside USA)
E: proteintech@ptglab.com
W: ptglab.com

This product is exclusively available under Proteintech Group brand and is not available to purchase from any other manufacturer.

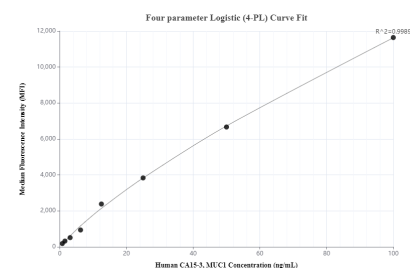
Selected Validation Data



Sandwich ELISA standard curve of MP00335-1, Human MUC1/CA15-3 C-terminal Recombinant Matched Antibody Pair - PBS only. 83311-3-PBS was coated to a plate as the capture antibody and incubated with serial dilutions of standard Ag20366. 83311-1-PBS was HRP conjugated as the detection antibody. Range: 78.1-5000 pg/mL



Serum of eight humans was measured. The human MUC1/CA15-3 C-terminal concentration of detected samples was determined to be 812.7 pg/mL with a range of 159.5 - 4,480.5 pg/mL



Cytometric bead array standard curve of MP00335-1, MUC1/CA15-3 C-terminal Recombinant Matched Antibody Pair, PBS Only. Capture antibody: 83311-3-PBS. Detection antibody: 83311-1-PBS. Standard: Ag20366. Range: 0.78-100 ng/mL