

For Research Use Only

BRAP Recombinant antibody, PBS Only (Capture/Detector)

Catalog Number: 83314-5-PBS



Basic Information

Catalog Number: 83314-5-PBS	GenBank Accession Number: BC136698	Purification Method: Protein A purification
Size: 100ug, Concentration: 1 mg/ml by Nanodrop;	GeneID (NCBI): 8315	CloneNo.: 240099G12
Source: Rabbit	UNIPROT ID: Q7Z569	
Isotype: IgG	Full Name: BRCA1 associated protein	
Immunogen Catalog Number: AG26728	Calculated MW: 592 aa, 67 kDa	

Applications

Tested Applications:
Cytometric bead array, Sandwich ELISA, Indirect ELISA, Sample test

Species Specificity:
human

Product Information

83314-5-PBS targets BRAP as part of a matched antibody pair:

MP00338-1: 83314-2-PBS capture and 83314-5-PBS detection (validated in Cytometric bead array)

MP00338-4: 83314-5-PBS capture and 83314-2-PBS detection (validated in Sandwich ELISA)

Unconjugated rabbit recombinant monoclonal antibody in PBS only (BSA and azide free) storage buffer at a concentration of 1 mg/mL, ready for conjugation. Created using Proteintech's proprietary in-house recombinant technology. Recombinant production enables unrivalled batch-to-batch consistency, easy scale-up, and future security of supply.

This conjugation ready format makes antibodies ideal for use in many applications including: ELISAs, multiplex assays requiring matched pairs, mass cytometry, and multiplex imaging applications. Antibody use should be optimized by the end user for each application and assay.

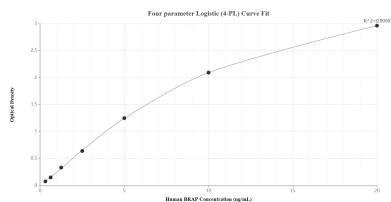
Storage

Storage:
Store at -80°C.
Storage Buffer:
PBS Only

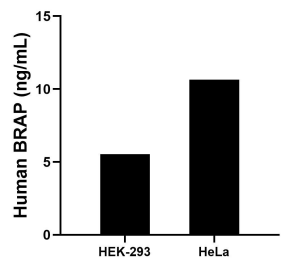
For technical support and original validation data for this product please contact:
T: 1 (888) 4PTGLAB (1-888-478-4522) (toll free in USA), or 1(312) 455-8498 (outside USA)
E: proteintech@ptglab.com
W: ptglab.com

This product is exclusively available under Proteintech Group brand and is not available to purchase from any other manufacturer.

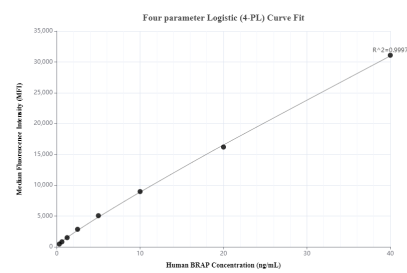
Selected Validation Data



Sandwich ELISA standard curve of MP00338-4, Human BRAP Recombinant Matched Antibody Pair - PBS only. 83314-5-PBS was coated to a plate as the capture antibody and incubated with serial dilutions of standard Ag26728. 83314-2-PBS was HRP conjugated as the detection antibody. Range: 0.313-20 ng/mL.



The mean BRAP concentration was determined to be 5.53 ng/mL in HEK-293 cell extract based on a 1.20 mg/mL extract load and 10.64 ng/mL in HeLa cell extract based on a 1.20 mg/mL extract load.



Cytometric bead array standard curve of MP00338-1, BRAP Recombinant Matched Antibody Pair, PBS Only. Capture antibody: 83314-2-PBS. Detection antibody: 83314-5-PBS. Standard: Ag26728. Range: 0.313-40 ng/mL.