

For Research Use Only

GPC1 Recombinant antibody, PBS Only (Capture)



Catalog Number: 83318-3-PBS

Basic Information

Catalog Number: 83318-3-PBS	GenBank Accession Number: BC051279	Purification Method: Protein A purification
Size: 100ug , Concentration: 1 mg/ml by Nanodrop;	GeneID (NCBI): 2817	CloneNo.: 240207E12
Source: Rabbit	UNIPROT ID: P35052	
Isotype: IgG	Full Name: glypican 1	
	Calculated MW: 558 aa, 62 kDa	

Applications

Tested Applications:
Cytometric bead array, Sandwich ELISA, Indirect ELISA, Sample test

Species Specificity:
human

Product Information

83318-3-PBS targets GPC1 as part of a matched antibody pair:

MP00342-2: 83318-3-PBS capture and 83318-2-PBS detection (validated in Cytometric bead array, Sandwich ELISA)

MP00342-3: 83318-3-PBS capture and 83318-1-PBS detection (validated in Cytometric bead array)

Unconjugated rabbit recombinant monoclonal antibody in PBS only (BSA and azide free) storage buffer at a concentration of 1 mg/mL, ready for conjugation. Created using Proteintech's proprietary in-house recombinant technology. Recombinant production enables unrivalled batch-to-batch consistency, easy scale-up, and future security of supply.

This conjugation ready format makes antibodies ideal for use in many applications including: ELISAs, multiplex assays requiring matched pairs, mass cytometry, and multiplex imaging applications. Antibody use should be optimized by the end user for each application and assay.

Storage

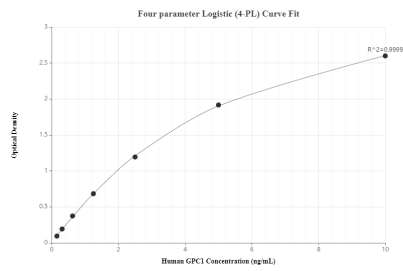
Storage:
Store at -80°C.

Storage Buffer:
PBS Only

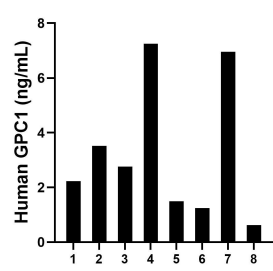
For technical support and original validation data for this product please contact:
T: 1 (888) 4PTGLAB (1-888-478-4522) (toll free in USA), or 1(312) 455-8498 (outside USA)
E: proteintech@ptglab.com
W: ptglab.com

This product is exclusively available under Proteintech Group brand and is not available to purchase from any other manufacturer.

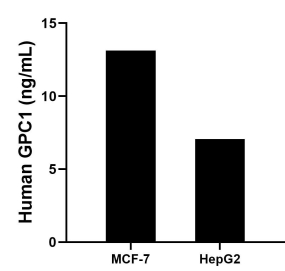
Selected Validation Data



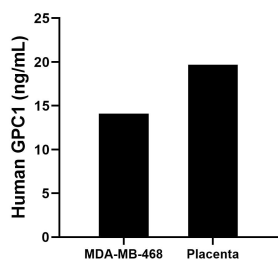
Sandwich ELISA standard curve of MP00342-2, human GPC1 Recombinant Matched Antibody Pair - PBS only. 83318-3-PBS was coated to a plate as the capture antibody and incubated with serial dilutions of standard Eg0737. 83318-2-PBS was HRP conjugated as the detection antibody. Range: 0.156-10 ng/mL



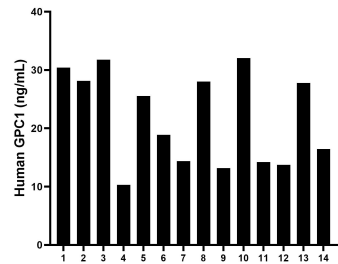
Urine of eight individual healthy human donors was measured. The GPC1 concentration of detected samples was determined to be 3.3 ng/mL with a range of 0.6 - 7.2 ng/mL



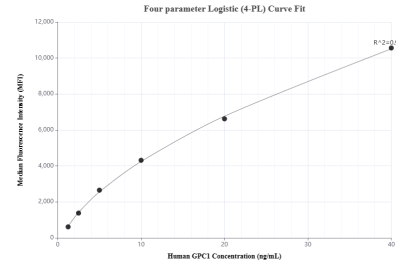
MCF-7 human breast cancer cells (5×10^6 cells/mL) were cultured in DMEM and 10% fetal bovine serum, 4 mM L-glutamine, 4500 mg/L glucose, 100 U/mL penicillin, and 100 µg/mL streptomycin sulfate. An aliquot of the cell culture supernatants was removed, assayed for human GPC1, and measured 13.1 ng/mL. HepG2 human hepatocellular carcinoma cells (5×10^6 cells/mL) were cultured in DMEM supplemented with 10% fetal bovine serum, 100 U/mL penicillin, and



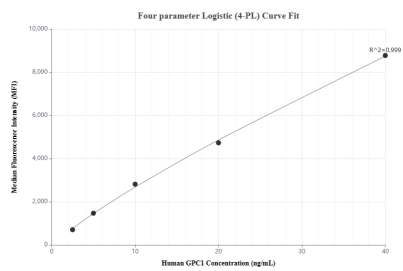
The mean GPC1 concentration was determined to be 10.0 ng/mL in MDA-MB-468 cell extract based on a 3.2 mg/mL extract load and 19.7 ng/mL in placenta tissue extract based on a 1.8 mg/mL extract load.



Serum of fourteen individual healthy human donors was measured. The GPC1 concentration of detected samples was determined to be 21.8 ng/mL with a range of 10.3 - 32.1 ng/mL



Cytometric bead array standard curve of MP00342-2, GPC1 Recombinant Matched Antibody Pair, PBS Only. Capture antibody: 83318-3-PBS. Detection antibody: 83318-2-PBS. Standard: Eg0737. Range: 1.25-40 ng/mL



Cytometric bead array standard curve of MP00342-3, GPC1 Recombinant Matched Antibody Pair, PBS Only. Capture antibody: 83318-3-PBS. Detection antibody: 83318-1-PBS. Standard: Eg0737. Range: 2.5-40 ng/mL