

For Research Use Only

GPC1 Recombinant antibody

Catalog Number: 83318-4-RR



Basic Information

Catalog Number:

83318-4-RR

Size:

100ul, Concentration: 700 ug/ml by Nanodrop;

Source:

Rabbit

Isotype:

IgG

GenBank Accession Number:

BC051279

GeneID (NCBI):

2817

UNIPROT ID:

P35052

Full Name:

glypican 1

Calculated MW:

558 aa, 62 kDa

Observed MW:

61-65 kDa

Purification Method:

Protein A purification

CloneNo.:

240207G5

Recommended Dilutions:

WB 1:500-1:2000

Applications

Tested Applications:

WB, ELISA

Species Specificity:

Human

Positive Controls:

WB : HepG2 cells,

Background Information

Glypicans are a family of HSPGs that are attached to the cell membrane by a glycosyl-phosphatidylinositol anchor. Glypicans are considered to have the ability to modulate the activities of HBGFs. The expression of glypicans is regulated temporally and spatially during development, suggesting they are involved in development and morphogenesis. To date, six glypicans (GPC1 to GPC6) have been identified in mammals. GPC1 is most ubiquitously expressed in adult tissues. GPC1 promotes efficient signaling by HBGFs and plays a critical role in cell growth and differentiation. GPC1 is involved in tumorigenesis and angiogenesis, and is frequently overexpressed in several types of tumors including pancreatic carcinoma, breast cancer and glioma.

Storage

Storage:

Store at -20°C. Stable for one year after shipment.

Storage Buffer:

PBS with 0.02% sodium azide and 50% glycerol pH 7.3.

Aliquoting is unnecessary for -20°C storage

*** 20ul sizes contain 0.1% BSA

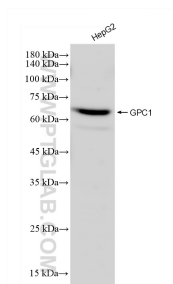
For technical support and original validation data for this product please contact:

T: 1 (888) 4PTGLAB (1-888-478-4522) (toll free in USA), or 1(312) 455-8498 (outside USA)

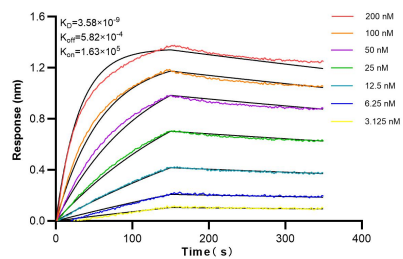
E: proteintech@ptglab.com
W: ptglab.com

This product is exclusively available under Proteintech Group brand and is not available to purchase from any other manufacturer.

Selected Validation Data



HepG2 cells were subjected to SDS PAGE followed by western blot with 83318-4-RR (GPC1 antibody) at dilution of 1:1000 incubated at room temperature for 1.5 hours.



Biolayer interferometry (BLI) kinetic assays of 83318-4-RR against Human GPC1 were performed. The affinity constant is 3.58 nM.