

For Research Use Only

RAB13 Recombinant antibody, PBS Only (Capture)

Catalog Number: 83336-2-PBS



Basic Information

| | | |
|---|--|---|
| Catalog Number: 83336-2-PBS | GenBank Accession Number: BC000799 | Purification Method: Protein A purification |
| Size: 100ug , Concentration: 1 mg/ml by Nanodrop; | GeneID (NCBI): 5872 | CloneNo.: 240216D10 |
| Source: Rabbit | UNIPROT ID: P51153 | |
| Isotype: IgG | Full Name: RAB13, member RAS oncogene family | |
| Immunogen Catalog Number: AG34898 | Calculated MW: 203 aa, 23 kDa | |
| | Observed MW: 23 kDa | |

Applications

Tested Applications:
WB, IF/ICC, FC (Intra), Cytometric bead array, Indirect ELISA

Species Specificity:
human

Product Information

83336-2-PBS targets RAB13 as part of a matched antibody pair:

MP00354-1: 83336-2-PBS capture and 83336-1-PBS detection (validated in Cytometric bead array)

Unconjugated rabbit recombinant monoclonal antibody in PBS only (BSA and azide free) storage buffer at a concentration of 1 mg/mL, ready for conjugation. Created using Proteintech's proprietary in-house recombinant technology. Recombinant production enables unrivalled batch-to-batch consistency, easy scale-up, and future security of supply.

This conjugation ready format makes antibodies ideal for use in many applications including: ELISAs, multiplex assays requiring matched pairs, mass cytometry, and multiplex imaging applications. Antibody use should be optimized by the end user for each application and assay.

Background Information

RAB13 (Ras-related protein Rab-13) is also named as GIG4. Rab13 is a member of the Rab GTPase family. RAB13 is highly expressed in malignant cells. Rab13 was highly expressed in BCSC of triple-negative breast cancer (TNBC) (PMID: 35395074). RAB13 is involved in a number of processes in LIHC, including MTORC1 signaling, MYC targets v1, G2M checkpoint, MITOTIC spindle, DNA repair, P53 pathway, glycolysis, PI3K-AKT-MTOR signaling, etc (PMID: 37803063). RAB13 enhances its circulation to the plasma membrane to promote breast cancer invasion. By influencing the tumor microenvironment, RAB13 maintains breast cancer stem cells (PMID: 37803063).

Storage

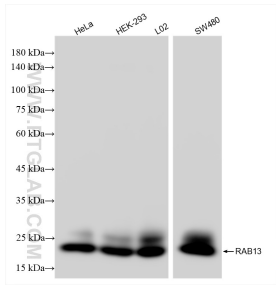
Storage:
Store at -80°C.

Storage Buffer:
PBS Only

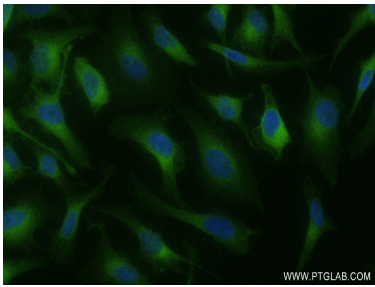
For technical support and original validation data for this product please contact:
T: 1 (888) 4PTGLAB (1-888-478-4522) (toll free in USA), or 1(312) 455-8498 (outside USA)
E: proteintech@ptglab.com
W: ptglab.com

This product is exclusively available under Proteintech Group brand and is not available to purchase from any other manufacturer.

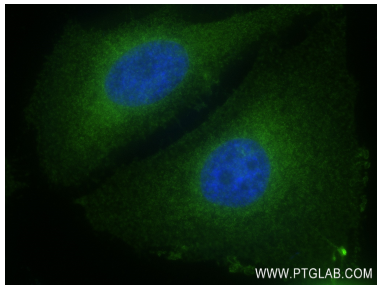
Selected Validation Data



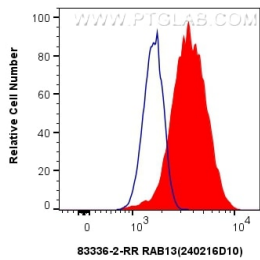
Various lysates were subjected to SDS PAGE followed by western blot with 83336-2-RR (RAB13 antibody) at dilution of 1:10000 incubated at room temperature for 1.5 hours. This data was developed using the same antibody clone with 83336-2-PBS in a different storage buffer formulation.



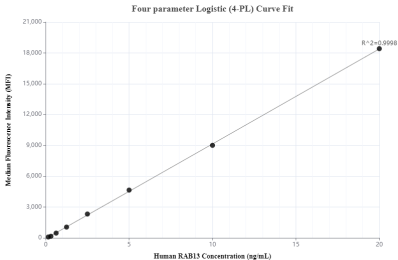
Immunofluorescent analysis of (4% PFA) fixed HeLa cells using RAB13 antibody (83336-2-RR, Clone: 240216D10) at dilution of 1:200 and CoraLite®488-Conjugated AffiniPure Goat Anti-Rabbit IgG(H+L) (SA00013-2). This data was developed using the same antibody clone with 83336-2-PBS in a different storage buffer formulation.



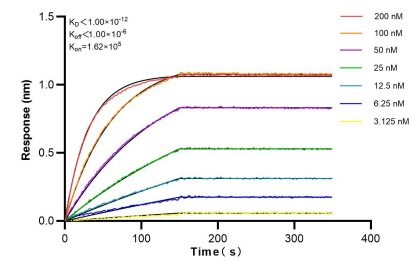
Immunofluorescent analysis of (4% PFA) fixed HeLa cells using RAB13 antibody (83336-2-RR, Clone: 240216D10) at dilution of 1:200 and CoraLite®488-Conjugated AffiniPure Goat Anti-Rabbit IgG(H+L) (SA00013-2). This data was developed using the same antibody clone with 83336-2-PBS in a different storage buffer formulation.



1x10⁶ K-562 cells were intracellularly stained with 0.25 ug RAB13 Recombinant antibody (83336-2-RR, Clone:240216D10) and CoraLite®488-Conjugated Goat Anti-Rabbit IgG(H+L) (SA00013-2)(red), or 0.25 ug Rabbit IgG Isotype Control Recombinant Antibody (98136-1-RR, Clone: 240953C9) (blue). Cells were fixed with 4% PFA and permeabilized with Flow Cytometry Perm Buffer (PF00011-C). This data was developed using the same antibody clone with 83336-2-PBS in a



Cytometric bead array standard curve of MP00354-1, RAB13 Recombinant Matched Antibody Pair - PBS only. Capture antibody: 83336-2-PBS. Detection antibody: 83336-1-PBS. Standard: Ag34898. Range: 0.156-20 ng/mL.



Biolayer interferometry (BLI) kinetic assays of 83336-2-RR against Human RAB13 were performed. The affinity constant is below 1 pM.