

For Research Use Only

# RHOBTB1 Recombinant antibody, PBS Only (Detector)



Catalog Number: 83342-1-PBS

## Basic Information

<b>Catalog Number:</b> 83342-1-PBS	<b>GenBank Accession Number:</b> BC032848	<b>Purification Method:</b> Protein A purification
<b>Size:</b> 100ug , Concentration: 1 mg/ml by Nanodrop;	<b>GeneID (NCBI):</b> 9886	<b>CloneNo.:</b> 240253F10
<b>Source:</b> Rabbit	<b>UNIPROT ID:</b> O94844	
<b>Isotype:</b> IgG	<b>Full Name:</b> Rho-related BTB domain containing 1	
<b>Immunogen Catalog Number:</b> AG3365	<b>Calculated MW:</b> 696 aa, 79 kDa	

## Applications

**Tested Applications:**  
WB, Indirect ELISA, Cytometric bead array

**Species Specificity:**  
Human

## Product Information

83342-1-PBS targets RHOBTB1 as part of a matched antibody pair:

MP00383-1: 83342-2-PBS capture and 83342-1-PBS detection (validated in Cytometric bead array)

Unconjugated rabbit recombinant monoclonal antibody in PBS only (BSA and azide free) storage buffer at a concentration of 1 mg/mL, ready for conjugation. Created using Proteintech's proprietary in-house recombinant technology. Recombinant production enables unrivalled batch-to-batch consistency, easy scale-up, and future security of supply.

This conjugation ready format makes antibodies ideal for use in many applications including: ELISAs, multiplex assays requiring matched pairs, mass cytometry, and multiplex imaging applications. Antibody use should be optimized by the end user for each application and assay.

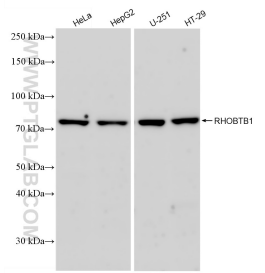
## Storage

**Storage:**  
Store at -80°C.  
**Storage Buffer:**  
PBS Only

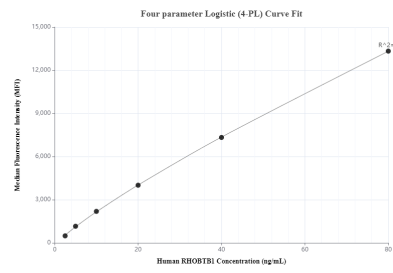
For technical support and original validation data for this product please contact:  
T: 1 (888) 4PTGLAB (1-888-478-4522) (toll free in USA), or 1(312) 455-8498 (outside USA)  
E: [proteintech@ptglab.com](mailto:proteintech@ptglab.com)  
W: [ptglab.com](http://ptglab.com)

This product is exclusively available under Proteintech Group brand and is not available to purchase from any other manufacturer.

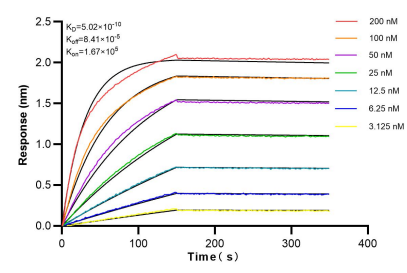
## Selected Validation Data



Various lysates were subjected to SDS PAGE followed by western blot with 83342-1-RR (RHOBTB1 antibody) at dilution of 1:10000 incubated at room temperature for 1.5 hours. This data was developed using the same antibody clone with 83342-1-PBS in a different storage buffer formulation.



Cytometric bead array standard curve of MP00383-1, RHOBTB1 Recombinant Matched Antibody Pair, PBS Only. Capture antibody: 83342-2-PBS. Detection antibody: 83342-1-PBS. Standard: Ag3365. Range: 2.5-80 ng/mL.



Biolayer interferometry (BLI) kinetic assays of 83342-1-RR against Human RHOBTB1 were performed. The affinity constant is 0.502 nM.