

For Research Use Only

LYPD3 Recombinant antibody

Catalog Number: 83345-1-RR

1 Publications



Basic Information

Catalog Number: 83345-1-RR	GenBank Accession Number: NM_014400	Purification Method: Protein A purification
Size: 100ul , Concentration: 1000 ug/ml by Nanodrop;	GeneID (NCBI): 27076	CloneNo.: 240347C5
Source: Rabbit	UNIPROT ID: O95274	Recommended Dilutions: WB 1:2000-1:12000
Isotype: IgG	Full Name: LY6/PLAUR domain containing 3	
Immunogen Catalog Number: AG34961	Calculated MW: 36 kDa	
	Observed MW: 75-80 kDa	

Applications

Tested Applications: WB, ELISA	Positive Controls: WB : MCF-7 cells, HaCaT cells, SK-BR-3 cells
Cited Applications: IHC	
Species Specificity: human	
Cited Species: human	

Background Information

LYPD3 (Ly6/PLAUR domain-containing protein 3), also known as C4.4A , is a membrane protein anchored to the cell surface via a glycosylphosphatidylinositol (GPI) moiety (PMID: 25302166; 15012588). It is a tumorigenic and high-glycosylated protein that has been proven to be linked with the carcinogenic effects in different solid tumors, such as lung cancer and breast cancer (PMID: 32040344; 29371917; 31644911). It has been shown that the elevated expression of LYPD3 is associated with lung adenocarcinoma carcinogenesis and poor prognosis (PMID: 25302166; 32040344).

Notable Publications

Author	Pubmed ID	Journal	Application
Zipei Song	39602465	J Cell Mol Med	IHC

Storage

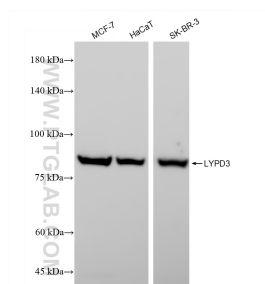
Storage:
Store at -20°C. Stable for one year after shipment.
Storage Buffer:
PBS with 0.02% sodium azide and 50% glycerol pH 7.3.
Aliquoting is unnecessary for -20°C storage

*** 20ul sizes contain 0.1% BSA

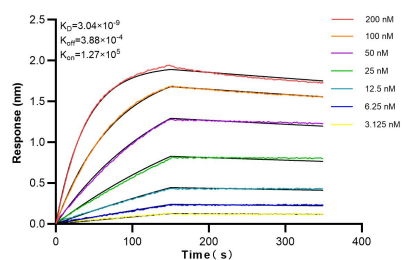
For technical support and original validation data for this product please contact:
T: 1 (888) 4PTGLAB (1-888-478-4522) (toll free in USA), or 1(312) 455-8498 (outside USA)
E: proteintech@ptglab.com
W: ptglab.com

This product is exclusively available under Proteintech Group brand and is not available to purchase from any other manufacturer.

Selected Validation Data



Various lysates were subjected to SDS PAGE followed by western blot with 83345-1-RR (LYPD3 antibody) at dilution of 1:6000 incubated at room temperature for 1.5 hours.



Biolayer interferometry (BLI) kinetic assays of 83345-1-RR against Human LYPD3 were performed. The affinity constant is 3.04 nM.