

For Research Use Only

# IGFBP1 Recombinant antibody, PBS Only (Capture)

Catalog Number: 83347-2-PBS



## Basic Information

<b>Catalog Number:</b> 83347-2-PBS	<b>GenBank Accession Number:</b> NM_000596.4	<b>Purification Method:</b> Protein A purification
<b>Size:</b> 100ug , Concentration: 1 mg/ml by Nanodrop;	<b>GeneID (NCBI):</b> 3484	<b>CloneNo.:</b> 240263B5
<b>Source:</b> Rabbit	<b>UNIPROT ID:</b> P08833	
<b>Isotype:</b> IgG	<b>Full Name:</b> IGF binding protein 1	
<b>Immunogen Catalog Number:</b> EG0951	<b>Calculated MW:</b> 28 kDa	

## Applications

**Tested Applications:**  
Cytometric bead array, Sandwich ELISA, Indirect ELISA, Sample test

**Species Specificity:**  
human

## Product Information

83347-2-PBS targets IGFBP1 as part of a matched antibody pair:

MP00355-1: 83347-2-PBS capture and 83347-3-PBS detection (validated in Cytometric bead array)

MP00355-2: 83347-2-PBS capture and 83347-1-PBS detection (validated in Cytometric bead array)

MP00355-3: 83347-2-PBS capture and 83347-4-PBS detection (validated in Cytometric bead array, Sandwich ELISA)

Unconjugated rabbit recombinant monoclonal antibody in PBS only (BSA and azide free) storage buffer at a concentration of 1 mg/mL, ready for conjugation. Created using Proteintech's proprietary in-house recombinant technology. Recombinant production enables unrivalled batch-to-batch consistency, easy scale-up, and future security of supply.

This conjugation ready format makes antibodies ideal for use in many applications including: ELISAs, multiplex assays requiring matched pairs, mass cytometry, and multiplex imaging applications. Antibody use should be optimized by the end user for each application and assay.

## Storage

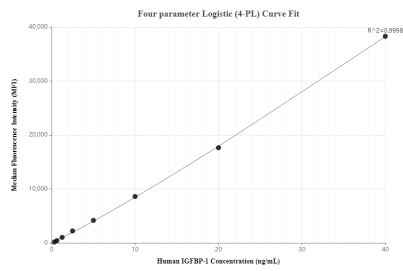
**Storage:**  
Store at -80°C.

**Storage Buffer:**  
PBS only, pH7.3

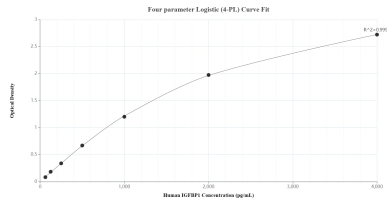
For technical support and original validation data for this product please contact:  
T: 1 (888) 4PTGLAB (1-888-478-4522) (toll free in USA), or 1(312) 455-8498 (outside USA)  
E: [proteintech@ptglab.com](mailto:proteintech@ptglab.com)  
W: [ptglab.com](http://ptglab.com)

This product is exclusively available under Proteintech Group brand and is not available to purchase from any other manufacturer.

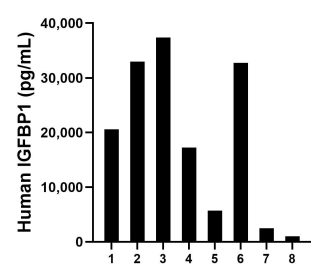
Selected Validation Data



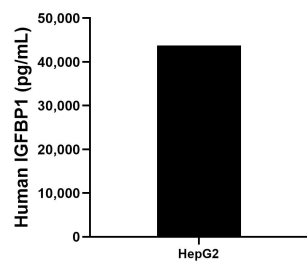
Cytometric bead array standard curve of MP00355-3, IGFBP1 Recombinant Matched Antibody Pair, PBS Only. Capture antibody: 83347-2-PBS. Detection antibody: 83347-4-PBS. Standard: Eg0951. Range: 0.313-40 ng/mL



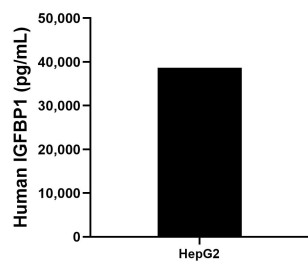
Sandwich ELISA standard curve of MP00355-3, Human IGFBP1 Recombinant Matched Antibody Pair - PBS only. 83347-2-PBS was coated to a plate as the capture antibody and incubated with serial dilutions of standard Eg0951. 83347-4-PBS was HRP conjugated as the detection antibody. Range: 62.5-4000 pg/mL



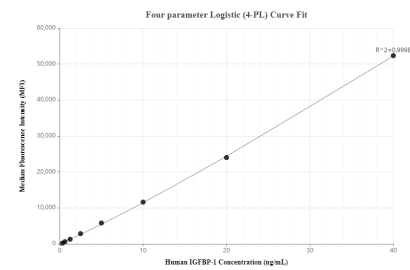
Serum of eight individual healthy human donors was measured. The IGFBP1 concentration of detected samples was determined to be 18,764.2 pg/mL with a range of 1,025.1 - 37,369.6 pg/mL



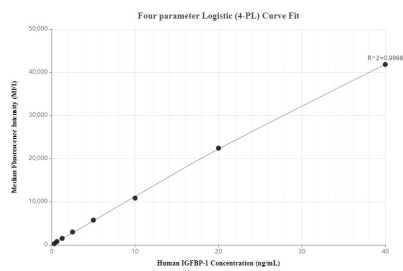
HepG2 cells were cultured in DMEM supplemented with 10% fetal bovine serum, 2.5 mM L-glutamine, 100 U/mL penicillin, and 100 µg/mL streptomycin sulfate. An aliquot of the cell culture supernate was removed, assayed for human IGFBP1, and measured 43,726.4 pg/mL



The mean IGFBP1 concentration was determined to be 38,698.4 pg/mL in HepG2 cell extract based on a 1.5 mg/mL extract load.



Cytometric bead array standard curve of MP00355-1, IGFBP1 Recombinant Matched Antibody Pair, PBS Only. Capture antibody: 83347-2-PBS. Detection antibody: 83347-3-PBS. Standard: Eg0951. Range: 0.313-40 ng/mL



Cytometric bead array standard curve of MP00355-2, IGFBP1 Recombinant Matched Antibody Pair, PBS Only. Capture antibody: 83347-2-PBS. Detection antibody: 83347-1-PBS. Standard: Eg0951. Range: 0.313-40 ng/mL