

For Research Use Only

# FGR Recombinant antibody, PBS Only (Capture)

Catalog Number: 83352-1-PBS



## Basic Information

<b>Catalog Number:</b> 83352-1-PBS	<b>GenBank Accession Number:</b> NM_005248	<b>Purification Method:</b> Protein A purification
<b>Size:</b> 100ug , Concentration: 1 mg/ml by Nanodrop;	<b>GeneID (NCBI):</b> 2268	<b>CloneNo.:</b> 240275E5
<b>Source:</b> Rabbit	<b>UNIPROT ID:</b> P09769	
<b>Isotype:</b> IgG	<b>Full Name:</b> Gardner-Rasheed feline sarcoma viral (v-fgr) oncogene homolog	
<b>Immunogen Catalog Number:</b> AG34944	<b>Calculated MW:</b> 59 kDa	
	<b>Observed MW:</b> 60 kDa	

## Applications

**Tested Applications:**  
WB, IF/ICC, Cytometric bead array, Sandwich ELISA, Indirect ELISA, Sample test

**Species Specificity:**  
human

## Product Information

83352-1-PBS targets FGR as part of a matched antibody pair.

MP00370-1: 83352-1-PBS capture and 83352-3-PBS detection (validated in Cytometric bead array, Sandwich ELISA)

Unconjugated rabbit recombinant monoclonal antibody in PBS only (BSA and azide free) storage buffer at a concentration of 1 mg/mL, ready for conjugation. Created using Proteintech's proprietary in-house recombinant technology. Recombinant production enables unrivalled batch-to-batch consistency, easy scale-up, and future security of supply.

This conjugation ready format makes antibodies ideal for use in many applications including: ELISAs, multiplex assays requiring matched pairs, mass cytometry, and multiplex imaging applications. Antibody use should be optimized by the end user for each application and assay.

## Background Information

FGR (Tyrosine-protein kinase Fgr) is a member of the Src family of protein tyrosine kinases (PTKs). It contains N-terminal sites for myristylation and palmitoylation, a PTK domain, and SH2 and SH3 domains which are involved in mediating protein-protein interactions with phosphotyrosine-containing and proline-rich motifs, respectively.

## Storage

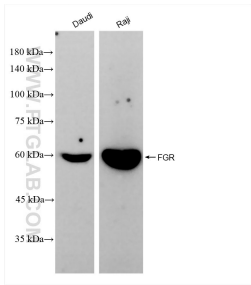
**Storage:**  
Store at -80°C.

**Storage Buffer:**  
PBS Only

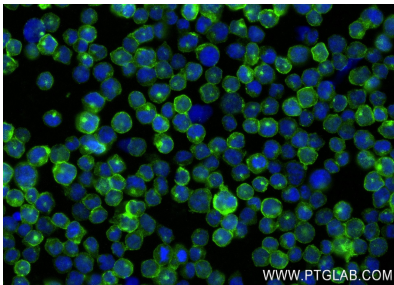
For technical support and original validation data for this product please contact:  
T: 1 (888) 4PTGLAB (1-888-478-4522) (toll free in USA), or 1(312) 455-8498 (outside USA)  
E: [proteintech@ptglab.com](mailto:proteintech@ptglab.com)  
W: [ptglab.com](http://ptglab.com)

This product is exclusively available under Proteintech Group brand and is not available to purchase from any other manufacturer.

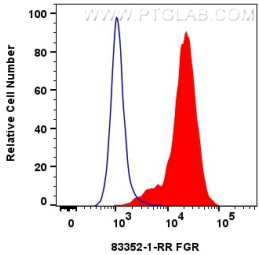
Selected Validation Data



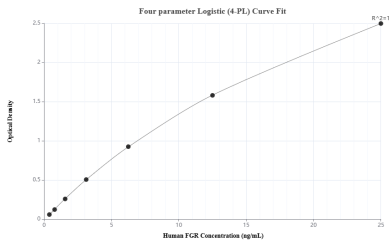
Various lysates were subjected to SDS PAGE followed by western blot with 83352-1-RR (FGR antibody) at dilution of 1:10000 incubated at room temperature for 1.5 hours. This data was developed using the same antibody clone with 83352-1-PBS in a different storage buffer formulation.



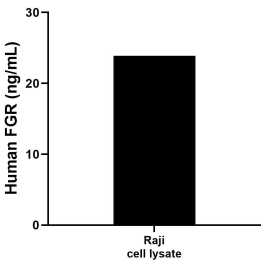
Immunofluorescent analysis of (4% PFA) fixed Raji cells using FGR antibody (83352-1-RR, Clone: 240275E5 ) at dilution of 1:250 and CoraLite®488-Conjugated AffiniPure Goat Anti-Rabbit IgG(H+L) (SA00013-2). This data was developed using the same antibody clone with 83352-1-PBS in a different storage buffer formulation.



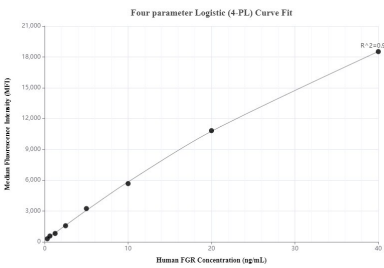
1x10<sup>6</sup> Raji cells were intracellularly stained with 0.25 ug FGR Recombinant antibody (83352-1-RR, Clone:240275E5) and CoraLite®488-Conjugated Goat Anti-Rabbit IgG(H+L) (SA00013-2)(red), or 0.25 ug Rabbit IgG Isotype Control Recombinant Antibody (98136-1-RR, Clone: 240953C9) (blue). Cells were fixed with 4% PFA and permeabilized with Flow Cytometry Perm Buffer (PF00011-C). This data was developed using the same antibody clone with 83352-1-PBS in a



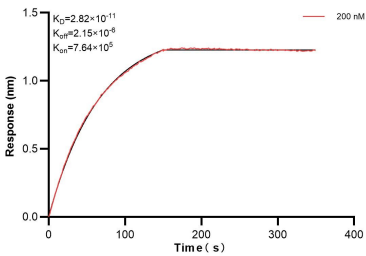
Sandwich ELISA standard curve of MP00370-1, Human FGR Recombinant Matched Antibody Pair - PBS only. 83352-1-PBS was coated to a plate as the capture antibody and incubated with serial dilutions of standard Ag34944. 83352-3-PBS was HRP conjugated as the detection antibody. Range: 0.0781-25 ng/mL



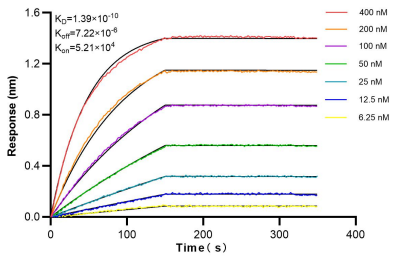
Raji cell lysate was measured. The human FGR concentration of detected samples was determined to be 23.90 ng/mL (based on a 1.2 mg/mL extract load).



Cytometric bead array standard curve of MP00370-1, FGR Recombinant Matched Antibody Pair, PBS Only. Capture antibody: 83352-1-PBS. Detection antibody: 83352-3-PBS. Standard: Ag34944. Range: 0.313-40 ng/mL



Biolayer interferometry (BLI) kinetic assay of 83352-1-PBS against Human FGR was performed. The affinity constant is 28.2 pM.



Biolayer interferometry (BLI) kinetic assays of 83352-1-RR against Human FGR were performed. The affinity constant is 0.139 nM.