

For Research Use Only

# KIAA1217 Recombinant antibody, PBS Only (Capture)



Catalog Number: 83361-2-PBS

## Basic Information

<b>Catalog Number:</b> 83361-2-PBS	<b>GenBank Accession Number:</b> BC018764	<b>Purification Method:</b> Protein A purification
<b>Size:</b> 100ug , Concentration: 1 mg/ml by Nanodrop;	<b>GeneID (NCBI):</b> 56243	<b>CloneNo.:</b> 240276F3
<b>Source:</b> Rabbit	<b>UNIPROT ID:</b> Q5T5P2	
<b>Isotype:</b> IgG	<b>Full Name:</b> KIAA1217	
<b>Immunogen Catalog Number:</b> AG19367	<b>Calculated MW:</b> 1943 aa, 214 kDa	

## Applications

**Tested Applications:**  
WB, Cytometric bead array, Indirect ELISA

**Species Specificity:**  
human

## Product Information

83361-2-PBS targets KIAA1217 as part of a matched antibody pair:

MP00371-1: 83361-2-PBS capture and 83361-1-PBS detection (validated in Cytometric bead array)

Unconjugated rabbit recombinant monoclonal antibody in PBS only (BSA and azide free) storage buffer at a concentration of 1 mg/mL, ready for conjugation. Created using Proteintech's proprietary in-house recombinant technology. Recombinant production enables unrivalled batch-to-batch consistency, easy scale-up, and future security of supply.

This conjugation ready format makes antibodies ideal for use in many applications including: ELISAs, multiplex assays requiring matched pairs, mass cytometry, and multiplex imaging applications. Antibody use should be optimized by the end user for each application and assay.

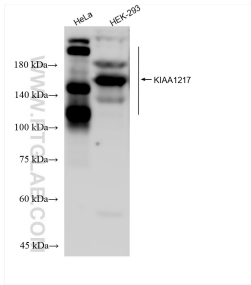
## Storage

**Storage:**  
Store at -80°C.  
**Storage Buffer:**  
PBS Only

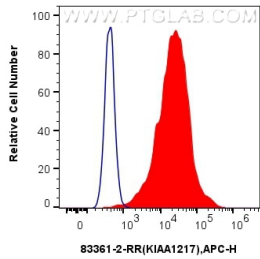
For technical support and original validation data for this product please contact:  
T: 1 (888) 4PTGLAB (1-888-478-4522) (toll free in USA), or 1(312) 455-8498 (outside USA)  
E: [proteintech@ptglab.com](mailto:proteintech@ptglab.com)  
W: [ptglab.com](http://ptglab.com)

This product is exclusively available under Proteintech Group brand and is not available to purchase from any other manufacturer.

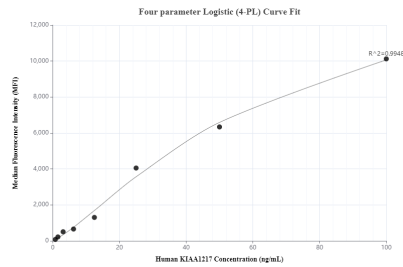
Selected Validation Data



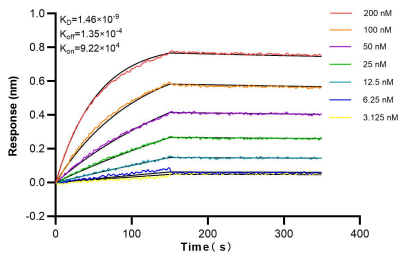
Various lysates were subjected to SDS PAGE followed by western blot with 83361-2-RR (KIAA1217 antibody) at dilution of 1:10000 incubated at room temperature for 1.5 hours. This data was developed using the same antibody clone with 83361-2-PBS in a different storage buffer formulation.



1x10<sup>6</sup> MCF-7 cells were intracellularly stained with 0.25 ug KIAA1217 Recombinant antibody (83361-2-RR, Clone:240276F3) and APC-Conjugated AffiniPure Goat Anti-Rabbit IgG(H+L) (red), or 0.25 ug Isotype Control (blue). Cells were fixed with 4% PFA and permeabilized with Flow Cytometry Perm Buffer (PF00011-C). This data was developed using the same antibody clone with 83361-2-PBS in a different storage buffer formulation.



Cytometric bead array standard curve of MP00371-1, KIAA1217 Recombinant Matched Antibody Pair, PBS Only. Capture antibody: 83361-2-PBS. Detection antibody: 83361-1-PBS. Standard: Ag19367. Range: 0.78-100ng/mL.



Bioluminescence resonance energy transfer (BRET) kinetic assays of 83361-2-RR against Human KIAA1217 were performed. The affinity constant is 1.46 nM.