

For Research Use Only

KIAA1217 Recombinant antibody

Catalog Number: 83361-2-RR

Featured Product



Basic Information

Catalog Number:

83361-2-RR

Size:

100ul, Concentration: 1000 ug/ml by Nanodrop;

Source:

Rabbit

Isotype:

IgG

Immunogen Catalog Number:

AG19367

GenBank Accession Number:

BC018764

GeneID (NCBI):

56243

UNIPROT ID:

Q5T5P2

Full Name:

KIAA1217

Calculated MW:

1943 aa, 214 kDa

Observed MW:

100-110, 140-160, 210

Purification Method:

Protein A purification

CloneNo.:

240276F3

Recommended Dilutions:

WB 1:5000-1:50000

Applications

Tested Applications:

WB, FC (Intra), ELISA

Species Specificity:

human

Positive Controls:

WB : HeLa cells, HEK-293 cells

Background Information

KIAA1217, sickle tail protein homolog, is required for normal development of intervertebral disks. It promotes epithelial-mesenchymal transition and hepatocellular carcinoma metastasis by interacting with and activating STAT3, indicating its potential as a therapeutic target for curbing HCC metastasis (PMID: 35008530). It is also a novel candidate gene associated with isolated and syndromic vertebral malformations (PMID: 32369272). KIAA1217 has 9 alternatively spliced isoforms of 100-110 kDa, 140-160 kDa, 210 kDa.

Storage

Storage:

Store at -20°C. Stable for one year after shipment.

Storage Buffer:

PBS with 0.02% sodium azide and 50% glycerol pH 7.3.

Aliquoting is unnecessary for -20°C storage

*** 20ul sizes contain 0.1% BSA

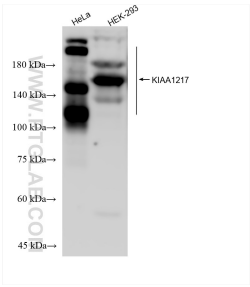
For technical support and original validation data for this product please contact:

T: 1 (888) 4PTGLAB (1-888-478-4522) (toll free in USA), or 1(312) 455-8498 (outside USA)

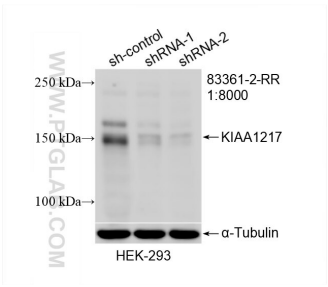
E: proteintech@ptglab.com
W: ptglab.com

This product is exclusively available under Proteintech Group brand and is not available to purchase from any other manufacturer.

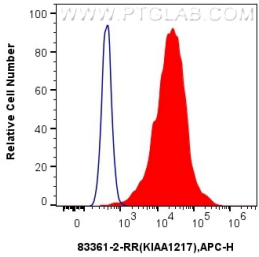
Selected Validation Data



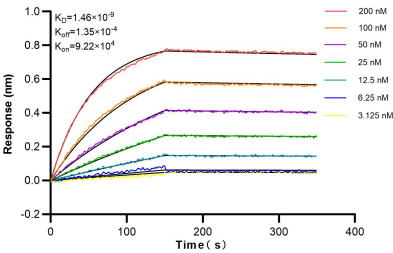
Various lysates were subjected to SDS PAGE followed by western blot with 83361-2-RR (KIAA1217 antibody) at dilution of 1:10000 incubated at room temperature for 1.5 hours.



WB result of KIAA1217 antibody (83361-2-RR; 1:8000; incubated at room temperature for 1.5 hours) with sh-Control and sh-KIAA1217 transfected HEK-293 cells.



1x10⁶ MCF-7 cells were intracellularly stained with 0.25 ug KIAA1217 Recombinant antibody (83361-2-RR, Clone:240276F3) and APC-Conjugated AffiniPure Goat Anti-Rabbit IgG(H+L) (red), or 0.25 ug Isotype Control (blue). Cells were fixed with 4% PFA and permeabilized with Flow Cytometry Perm Buffer (PF00011-C).



Biolayer interferometry (BLI) kinetic assays of 83361-2-RR against Human KIAA1217 were performed. The affinity constant is 1.46 nM.