

For Research Use Only

RBM20 Recombinant antibody, PBS Only (Capture/Detector)

Catalog Number: 83363-1-PBS



Basic Information

Catalog Number: 83363-1-PBS	GenBank Accession Number: NM_001134363	Purification Method: Protein A purification
Size: 100ug , Concentration: 1 mg/ml by Nanodrop;	GeneID (NCBI): 282996	CloneNo.: 240345B7
Source: Rabbit	UNIPROT ID: Q5T481	
Isotype: IgG	Full Name: RNA binding motif protein 20	
Immunogen Catalog Number: AG34322	Calculated MW: 134 kDa	
	Observed MW: 190 kDa	

Applications

Tested Applications:
WB, FC (Intra), Cytometric bead array, Sandwich ELISA, Indirect ELISA, Sample test

Species Specificity:
human

Product Information

83363-1-PBS targets RBM20 as part of a matched antibody pair:

MP00379-1: 83363-1-PBS capture and 83363-2-PBS detection (validated in Cytometric bead array)

MP00379-2: 83363-3-PBS capture and 83363-1-PBS detection (validated in Cytometric bead array)

MP00379-4: 83363-2-PBS capture and 83363-1-PBS detection (validated in Sandwich ELISA)

Unconjugated rabbit recombinant monoclonal antibody in PBS only (BSA and azide free) storage buffer at a concentration of 1 mg/mL, ready for conjugation. Created using Proteintech's proprietary in-house recombinant technology. Recombinant production enables unrivalled batch-to-batch consistency, easy scale-up, and future security of supply.

This conjugation ready format makes antibodies ideal for use in many applications including: ELISAs, multiplex assays requiring matched pairs, mass cytometry, and multiplex imaging applications. Antibody use should be optimized by the end user for each application and assay.

Background Information

RBM20 (RNA binding motif protein 20) is a heart- and skeletal muscle- enriched splicing factor that controls tissue-specific isoform expression of many other genes besides TTN, including sarcomeric genes such myomesin 1, but also Ca²⁺- and ion-handling genes such as CAMK2D (calcium/calmodulin-dependent kinase II-delta) and RYR2 (ryanodine receptor 2) (PMID: 29650543).

Storage

Storage:
Store at -80°C.
Storage Buffer:
PBS Only

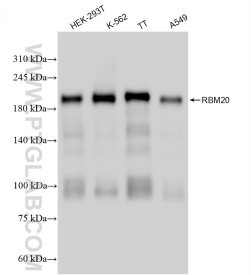
For technical support and original validation data for this product please contact:

T: 1 (888) 4PTGLAB (1-888-478-4522) (toll free in USA), or 1(312) 455-8498 (outside USA)

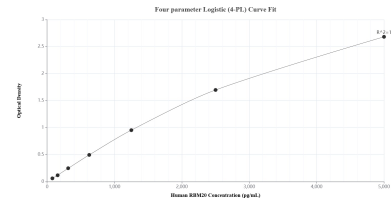
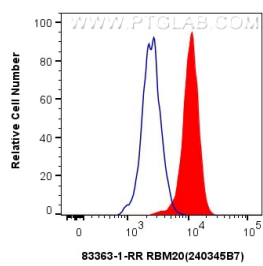
E: proteintech@ptglab.com
W: ptglab.com

This product is exclusively available under Proteintech Group brand and is not available to purchase from any other manufacturer.

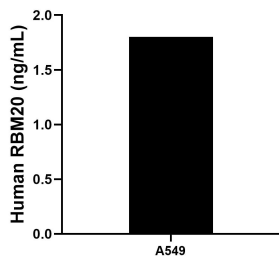
Selected Validation Data



Various lysates were subjected to SDS PAGE followed by western blot with 83363-1-RR (RBM20 antibody) at dilution of 1:10000 incubated at room temperature for 1.5 hours. This data was developed using the same antibody clone with 83363-1-PBS in a different storage buffer formulation.

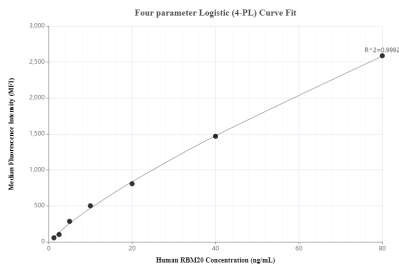
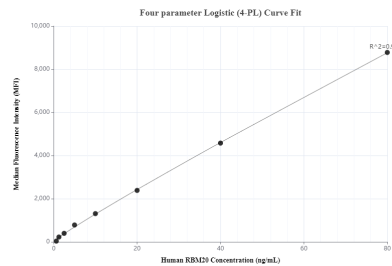


Sandwich ELISA standard curve of MP00379-4, Human RBM20 Recombinant Matched Antibody Pair - PBS only. 83363-2-PBS was coated to a plate as the capture antibody and incubated with serial dilutions of standard Ag34322. 83363-1-PBS was HRP conjugated as the detection antibody. Range: 78.1-5000 pg/mL.



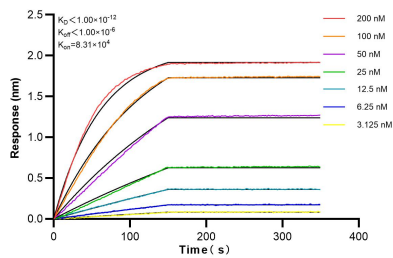
The mean RBM20 concentration was determined to be 1.8 ng/mL in A549 cell extract based on a 2.0 mg/mL extract load.

1x10⁶ K-562 cells were intracellularly stained with 0.2 ug RBM20 Recombinant antibody (83363-1-RR, Clone:240345B7) and CoraLite®488-Conjugated Goat Anti-Rabbit IgG(H+L) (SA00013-2)(red), or 0.2 ug Rabbit IgG Isotype Control Recombinant Antibody (98136-1-RR, Clone: 240953C9) (blue). Cells were fixed and permeabilized with Transcription Factor Staining Buffer Kit (PF00011). This data was developed using the same antibody clone with 83363-1-PBS



Cytometric bead array standard curve of MP00379-1, RBM20 Recombinant Matched Antibody Pair, PBS Only. Capture antibody: 83363-1-PBS. Detection antibody: 83363-2-PBS. Standard: Ag34322. Range: 0.625-80 ng/mL.

Cytometric bead array standard curve of MP00379-2, RBM20 Recombinant Matched Antibody Pair, PBS Only. Capture antibody: 83363-3-PBS. Detection antibody: 83363-1-PBS. Standard: Ag34322. Range: 1.25-80 ng/mL.



Biolayer interferometry (BLI) kinetic assays of 83363-1-RR against Human RBM20 were performed. The affinity constant is below 1 pM.