

For Research Use Only

RBM20 Recombinant antibody

Catalog Number: 83363-1-RR



Basic Information

Catalog Number: 83363-1-RR	GenBank Accession Number: NM_001134363	Purification Method: Protein A purification
Size: 100ul , Concentration: 1000 ug/ml by Nanodrop;	GeneID (NCBI): 282996	CloneNo.: 240345B7
Source: Rabbit	UNIPROT ID: Q5T481	Recommended Dilutions: WB 1:5000-1:50000
Isotype: IgG	Full Name: RNA binding motif protein 20	
Immunogen Catalog Number: AG34322	Calculated MW: 134 kDa	
	Observed MW: 190 kDa	

Applications

Tested Applications: WB, FC (Intra), ELISA	Positive Controls: WB : HEK-293T cells, K-562 cells, TT cells, A549 cells
Species Specificity: human	

Background Information

RBM20 (RNA binding motif protein 20) is a heart- and skeletal muscle- enriched splicing factor that controls tissue-specific isoform expression of many other genes besides TTN, including sarcomeric genes such myomesin 1, but also Ca²⁺- and ion-handling genes such as CAMK2D (calcium/calmodulin-dependent kinase II-delta) and RYR2 (ryanodine receptor 2) (PMID: 29650543).

Storage

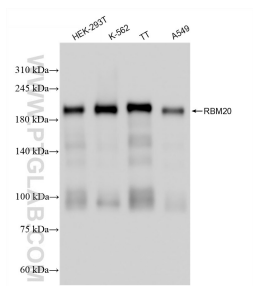
Storage:
Store at -20°C. Stable for one year after shipment.
Storage Buffer:
PBS with 0.02% sodium azide and 50% glycerol pH 7.3.
Aliquoting is unnecessary for -20°C storage

*** 20ul sizes contain 0.1% BSA

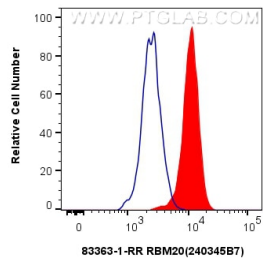
For technical support and original validation data for this product please contact:
T: 1 (888) 4PTGLAB (1-888-478-4522) (toll free in USA), or 1(312) 455-8498 (outside USA)
E: proteintech@ptglab.com
W: ptglab.com

This product is exclusively available under Proteintech Group brand and is not available to purchase from any other manufacturer.

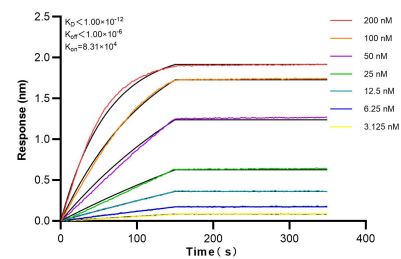
Selected Validation Data



Various lysates were subjected to SDS PAGE followed by western blot with 83363-1-RR (RBM20 antibody) at dilution of 1:10000 incubated at room temperature for 1.5 hours.



1x10⁶ K-562 cells were intracellularly stained with 0.2 ug RBM20 Recombinant antibody (83363-1-RR, Clone:240345B7) and CoraLite®488-Conjugated Goat Anti-Rabbit IgG(H+L) (SA00013-2) (red), or 0.2 ug Rabbit IgG Isotype Control Recombinant Antibody (98136-1-RR, Clone: 240953C9) (blue). Cells were fixed and permeabilized with Transcription Factor Staining Buffer Kit (PF00011).



Biolayer interferometry (BLI) kinetic assays of 83363-1-RR against Human RBM20 were performed. The affinity constant is below 1 pM.