

For Research Use Only

RBM20 Recombinant antibody, PBS Only (Capture/Detector)

Catalog Number: 83363-2-PBS



Basic Information

Catalog Number: 83363-2-PBS	GenBank Accession Number: NM_001134363	Purification Method: Protein A purification
Size: 100ug , Concentration: 1 mg/ml by Nanodrop;	GeneID (NCBI): 282996	CloneNo.: 240345F1
Source: Rabbit	UNIPROT ID: Q5T481	
Isotype: IgG	Full Name: RNA binding motif protein 20	
Immunogen Catalog Number: AG34322	Calculated MW: 134 kDa	

Applications

Tested Applications:
Cytometric bead array, Sandwich ELISA, Indirect ELISA, Sample test

Species Specificity:
human

Product Information

83363-2-PBS targets RBM20 as part of a matched antibody pair:

MP00379-1: 83363-1-PBS capture and 83363-2-PBS detection (validated in Cytometric bead array)

MP00379-3: 83363-3-PBS capture and 83363-2-PBS detection (validated in Cytometric bead array)

MP00379-4: 83363-2-PBS capture and 83363-1-PBS detection (validated in Sandwich ELISA)

Unconjugated rabbit recombinant monoclonal antibody in PBS only (BSA and azide free) storage buffer at a concentration of 1 mg/mL, ready for conjugation. Created using Proteintech's proprietary in-house recombinant technology. Recombinant production enables unrivalled batch-to-batch consistency, easy scale-up, and future security of supply.

This conjugation ready format makes antibodies ideal for use in many applications including: ELISAs, multiplex assays requiring matched pairs, mass cytometry, and multiplex imaging applications. Antibody use should be optimized by the end user for each application and assay.

Storage

Storage:
Store at -80°C.

Storage Buffer:
PBS Only

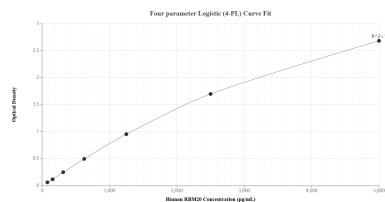
For technical support and original validation data for this product please contact:

T: 1 (888) 4PTGLAB (1-888-478-4522) (toll free in USA), or 1(312) 455-8498 (outside USA)

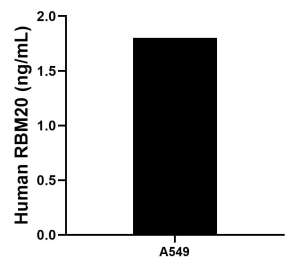
E: proteintech@ptglab.com
W: ptglab.com

This product is exclusively available under Proteintech Group brand and is not available to purchase from any other manufacturer.

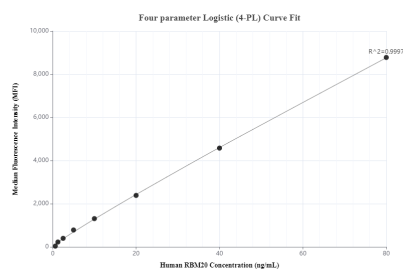
Selected Validation Data



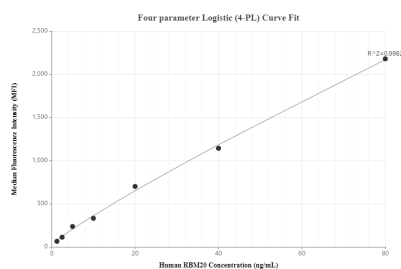
Sandwich ELISA standard curve of MP00379-4, Human RBM20 Recombinant Matched Antibody Pair - PBS only. 83363-2-PBS was coated to a plate as the capture antibody and incubated with serial dilutions of standard Ag34322. 83363-1-PBS was HRP conjugated as the detection antibody. Range: 78.1-5000 pg/mL.



The mean RBM20 concentration was determined to be 1.8 ng/mL in A549 cell extract based on a 2.0 mg/mL extract load.



Cytometric bead array standard curve of MP00379-1, RBM20 Recombinant Matched Antibody Pair, PBS Only. Capture antibody: 83363-1-PBS. Detection antibody: 83363-2-PBS. Standard: Ag34322. Range: 0.625-80 ng/mL.



Cytometric bead array standard curve of MP00379-3, RBM20 Recombinant Matched Antibody Pair, PBS Only. Capture antibody: 83363-3-PBS. Detection antibody: 83363-2-PBS. Standard: Ag34322. Range: 1.25-80 ng/mL.